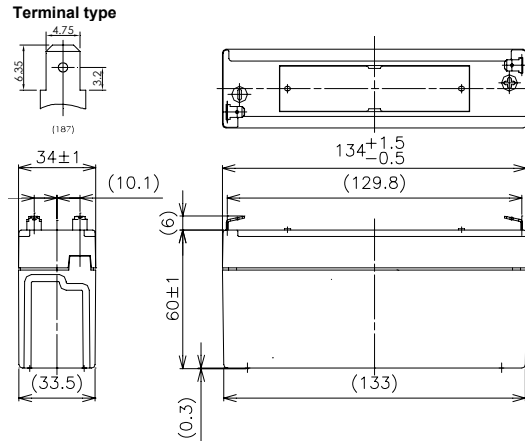




※Contents indicated (including the recycle marking, etc) are subject to change without notice.

### ■Dimensions(mm)



Battery case resin: standard (UL94HB)

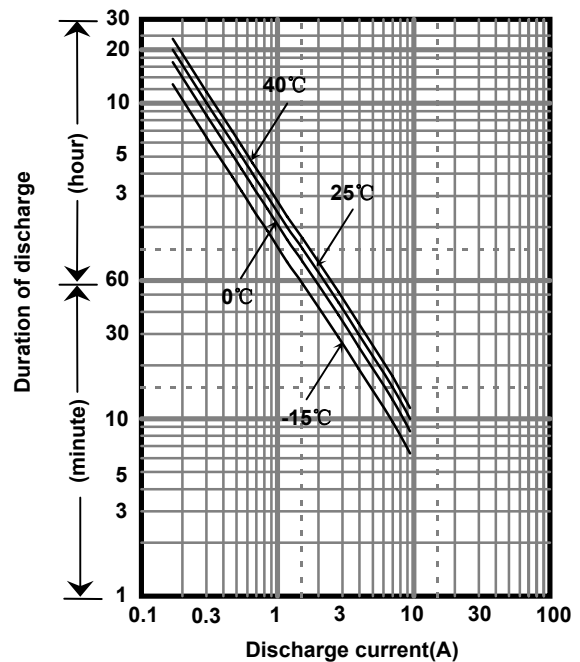
### ■Specifications

Nominal Voltage		6V
Rated Capacity(20HR)		3.4Ah
Dimensions	Length	134 mm
	Width	34 mm
	Height	60 mm
	Total height	66 mm
Approx. Mass		0.60 kg
Terminal		Faston 187

### ■Characteristics

Capacity (25 °C)	20 hour rate	3.4Ah
	10 hour rate	3.0Ah
	3 hour rate	2.7Ah
	1 hour rate	2.3Ah
Internal Resistance (25 °C)	Fully charged battery	30 mΩ
Temperature Dependency of Capacity (20 hour rate)	40 °C	102%
	25 °C	100%
	0 °C	85%
	-15 °C	65%
Self Discharge (25 °C)	After 3 months	91%
	After 6 months	82%
	After 12 months	64%

### ■Duration of discharge vs. discharge current



### ■Watt Table(25°C)

Cut-off V	3min	5min	10min	15min	20min	30min	45min	1h	1.5h	2h	3h	4h	5h	6h	10h	20h
4.80V	102	80.6	52.6	40.2	33.7	25.1	17.7	14.2	9.76	7.55	5.62	4.32	3.56	2.86	1.90	1.03
4.95V	94.8	75.6	51.6	39.9	33.1	24.9	17.6	14.1	9.56	7.49	5.59	4.29	3.54	2.85	1.89	1.03
5.10V	87.4	70.8	50.2	39.1	32.6	24.6	17.5	13.9	9.37	7.30	5.54	4.26	3.51	2.83	1.87	1.02
5.25V	77.7	63.4	46.5	36.4	30.9	24.0	17.2	13.6	9.17	7.04	5.45	4.23	3.48	2.80	1.86	1.02
5.40V	65.6	56.1	41.5	33.9	30.1	23.2	16.9	13.4	8.92	6.71	5.34	4.18	3.39	2.75	1.84	1.01

### ■Ampere Table(25°C)

Cut-off V	3min	5min	10min	15min	20min	30min	45min	1h	1.5h	2h	3h	4h	5h	6h	10h	20h
4.80V	18.4	14.4	9.40	6.99	5.81	4.30	3.02	2.41	1.66	1.26	0.949	0.722	0.595	0.484	0.318	0.171
4.95V	17.0	13.6	9.21	6.94	5.71	4.25	3.00	2.39	1.62	1.24	0.945	0.718	0.590	0.482	0.316	0.171
5.10V	15.7	12.7	8.97	6.80	5.62	4.20	2.97	2.36	1.59	1.22	0.935	0.713	0.586	0.478	0.313	0.170
5.25V	14.0	11.4	8.31	6.33	5.34	4.11	2.93	2.31	1.56	1.18	0.921	0.710	0.581	0.475	0.312	0.170
5.40V	11.8	10.1	7.41	5.90	5.19	3.97	2.88	2.27	1.51	1.13	0.897	0.708	0.567	0.472	0.307	0.165

All mentioned values are average values

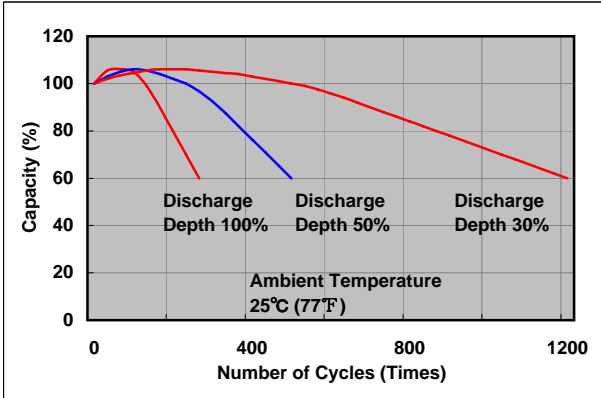
**Charging Method (25°C)**

Cycle use	Control voltage: 7.25-7.45V Initial current: 1.36A or smaller
-----------	--

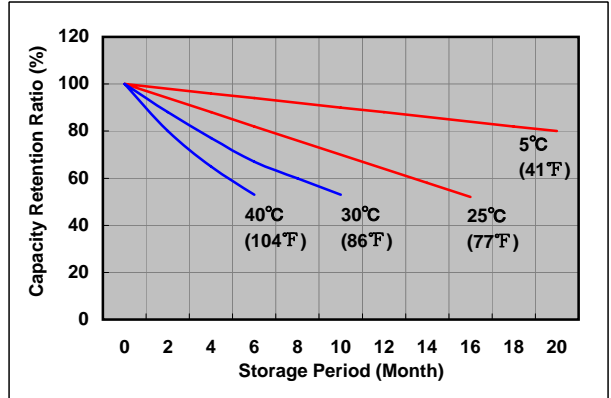
**Cut off voltage**

Discharge current	0.170A-0.680A	0.680A-1.70A	1.70A-3.40A	3.40A-6.80A	6.80A-10.2A
Cut off voltage(V)	5.25	5.10	4.95	4.65	4.35

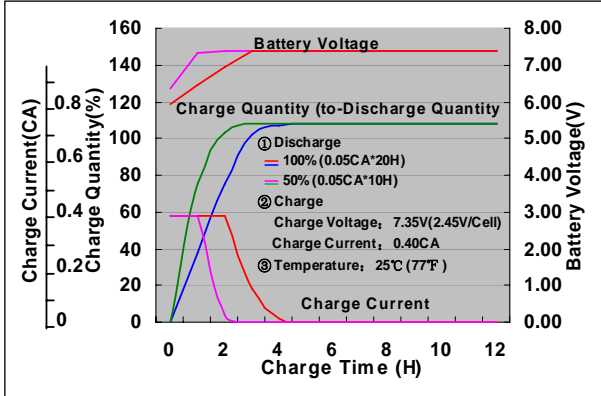
**Cycle life vs. Depth of discharge**



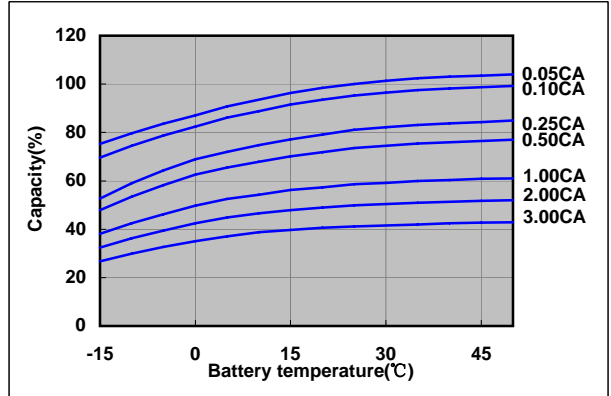
**Residual capacity test result**



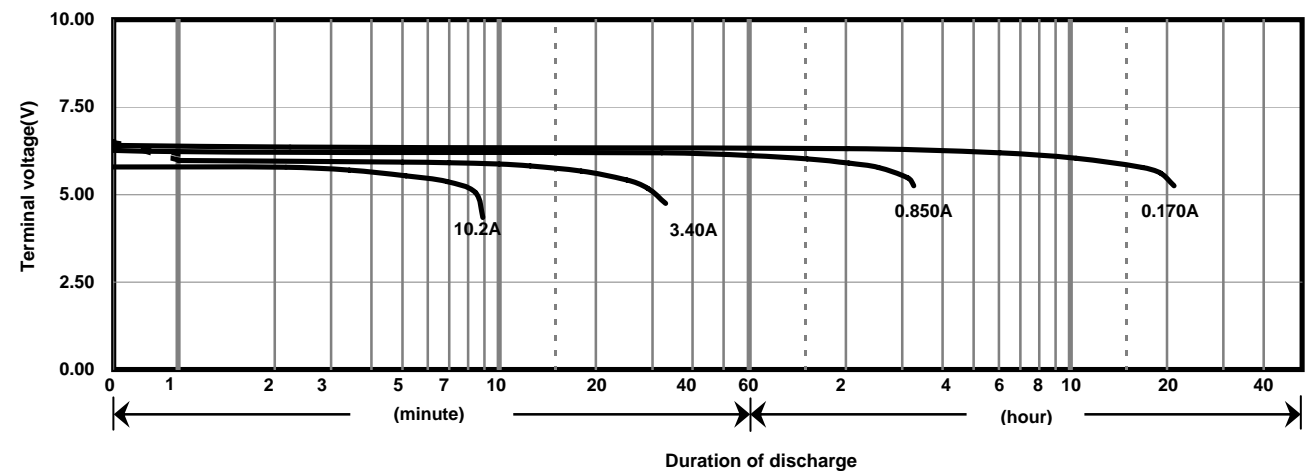
**Constant-voltage constant-current charge characteristics for Cycle use**



**Discharge capacity by temperature and by discharge current**



**Discharge characteristics(25°C)**



**Caution**  
 Due to the potential energy stored in the batteries, Please read 《Precautions for handling the Rechargeable Valve Regulated Lead Acid Batteries》 before using batteries. If improper handling or use of the batteries without understanding 《Precautions for handling the Rechargeable Valve Regulated Lead Acid Batteries》 may result in bodily injury caused by electrolyte leakage, heat generation, or explosion.

**Panasonic Storage Battery (Shenyang) Co., Ltd**

NO. 17 Hunhe 20Th Street, Shenyang Economic & Technical Development Zone, 110142 China  
 Tel: 86 24 25818921  
 Fax: 86 24 62786318  
 Website: <http://www.panasonicbattery.cn>

2015.01