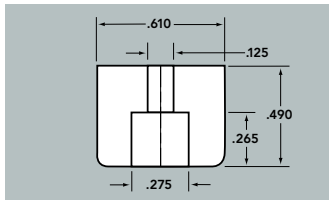


CHASSIS AND CABINET BUMPERS



AK574

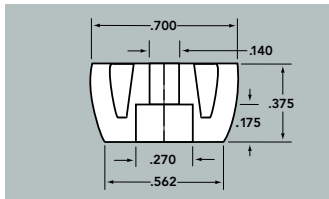


Low-friction polyethylene. Guards against scuffing. Supplied in either black or russet brown, with recessed hole for screw or bolt usage.

To order colors: 4- Black
7- Brown



AK575

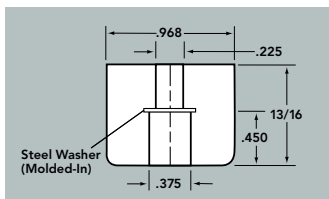


Low-friction polyethylene. Guards against scuffing. Supplied in either black or russet brown, with recessed hole for screw or bolt usage.

To order colors: 4- Black
7- Brown



AK576-4

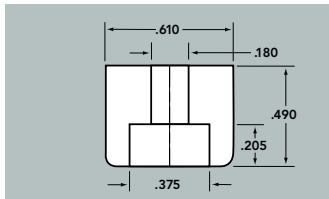


HEAVY DUTY.

Molded non-marring, high-tech strength neoprene with a molded-in steel washer for extra strength. Colors: Black standard, other colors available on special request.



AK577-8



Low-friction polyethylene. Guards against scuffing. Supplied in white nylon; thru hole .180 diameter, C bore .375

RECESSED BUMPERS



REC2081S

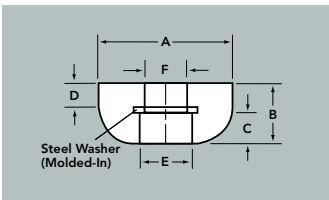


FIG. 1

Molded non-marring, high-tech strength neoprene with a molded-in steel washer for extra strength.



REC2082S

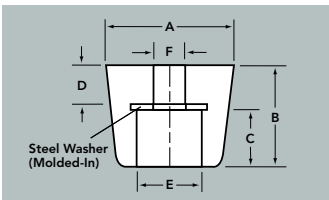


FIG. 2

| Part Number | NUT CLEARANCE | | | | | | Nominal Durometer |
|--------------------|-----------------|-------------|-----------------------|------------------------|-------------------------|------------------------|-------------------|
| | A Max. Diam. | B Height | C Screw Head Depth | D Screw Shaft Depth | E Screw Base Opening | F Screw Shaft Width | |
| REC-2081S (fig.1) | 5/8 | 5/16 | 3/16 | 1/8 | 1/4 | 3/16 | 75 |
| REC-2082S (fig.2) | 5/8 | 1/2 | 1/4 | 1/4 | 5/32 | 5/32 | 75 |
| REC-2084S (fig.2) | 3/4 | 3/8 | 3/16 | 3/16 | 7/16 | 3/16 | 75 |
| 04-00116-1 (fig.3) | .800 | .870 | .440 | .215 | .425 | .190 | - |
| 04-00116-2 (fig.3) | .800 | .870 | .310 | .215 | .425 | #10-24 | - |



717

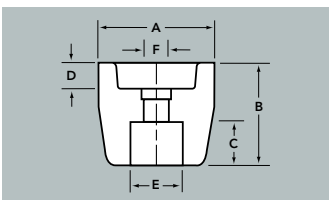


FIG. 3

Black Phenolic unthreaded (04-00116-1) and threaded (04-00116-2) bumpers.