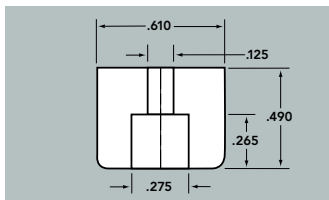


## CHASSIS AND CABINET BUMPERS



AK574

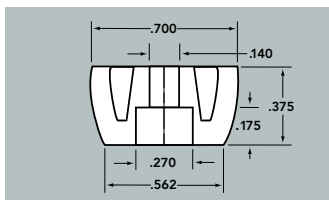


Low-friction polyethylene. Guards against scuffing. Supplied in either black or russet brown, with recessed hole for screw or bolt usage.

To order colors: 4– Black  
7– Brown



AK575

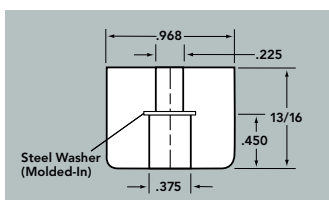


Low-friction polyethylene. Guards against scuffing. Supplied in either black or russet brown, with recessed hole for screw or bolt usage.

To order colors: 4– Black  
7– Brown



AK576-4



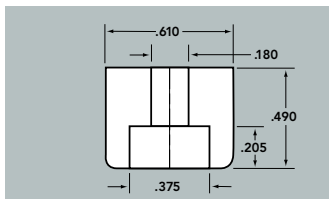
HEAVY DUTY.

Molded non-marring, high-tech strength neoprene with a molded-in steel washer for extra strength.

Colors: Black standard, other colors available on special request.



AK577-8



Low-friction polyethylene. Guards against scuffing. Supplied in white nylon; thru hole .180 diameter, C bore .375

## RECESSED BUMPERS



REC2081S

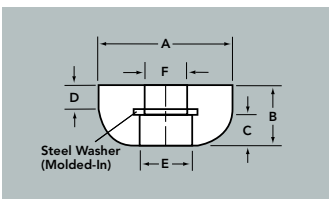


FIG. 1



REC2082S

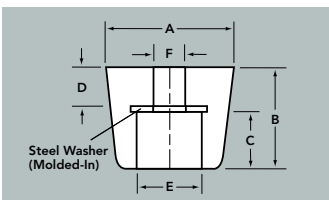


FIG. 2



717

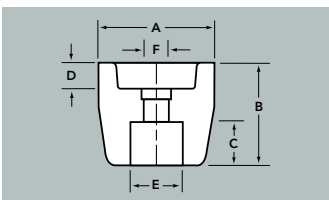


FIG. 3

Molded non-marring, high-tech strength neoprene with a molded-in steel washer for extra strength.

Part Number	NUT CLEARANCE						Nominal Durometer
	A Max. Diam.	B Height	C Screw Head Depth	D Screw Shaft Depth	E Screw Base Opening	F Screw Shaft Width	
REC-2081S (fig.1)	5/8	5/16	3/16	1/8	1/4	3/16	75
REC-2082S (fig.2)	5/8	1/2	1/4	1/4	5/32	5/32	75
REC-2084S (fig.2)	3/4	3/8	3/16	3/16	7/16	3/16	75
04-00116-1 (fig.3)	.800	.870	.440	.215	.425	.190	–
04-00116-2 (fig.3)	.800	.870	.310	.215	.425	#10-24	–

Black Phenolic unthreaded (04-00116-1) and threaded (04-00116-2) bumpers.