

PLEASE CHECK WWW.MOLEX.COM FOR LATEST PART INFORMATION

Part Number: **0705430038**
Status: **Active**
Overview: SL™ Modular Connectors
Description: 2.54mm Pitch SL™ Header, Single Row, Vertical, 3.05mm Pocket, Shrouded, 4 Circuits, Tin (Sn) Plating

Documents:

3D Model	Test Summary TS-70541-001 (PDF)
Drawing (PDF)	Test Summary TS-70541-100 (PDF)
Product Specification PS-70400 (PDF)	RoHS Certificate of Compliance (PDF)

Agency Certification

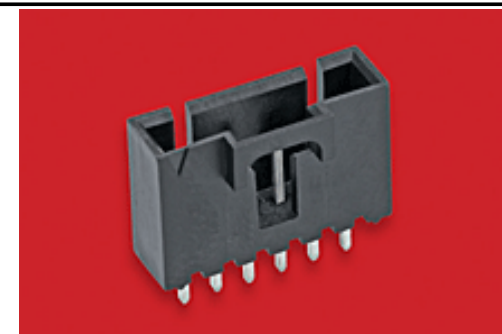
CSA	LR19980
UL	E29179

General

Product Family	PCB Headers
Series	70543
Application	Signal, Wire-to-Board
Overview	<u>SL™ Modular Connectors</u>
Product Name	SL™
UPC	800754353885

Physical

Breakaway	No
Circuits (Loaded)	4
Circuits (maximum)	4
Color - Resin	Black
Durability (mating cycles max)	25
First Mate / Last Break	No
Flammability	94V-0
Glow-Wire Compliant	No
Guide to Mating Part	No
Keying to Mating Part	None
Lock to Mating Part	Yes
Material - Metal	Brass, Phosphor Bronze
Material - Plating Mating	Tin
Material - Plating Termination	Tin
Material - Resin	High Temperature Thermoplastic
Net Weight	0.849/g
Number of Rows	1
Orientation	Vertical
PC Tail Length	3.30mm
PCB Locator	No
PCB Retention	None
PCB Thickness - Recommended	1.60mm
Packaging Type	Tube
Pitch - Mating Interface	2.54mm
Pitch - Termination Interface	2.54mm
Plating min - Mating	3.810µm
Plating min - Termination	3.810µm
Polarized to Mating Part	Yes
Shrouded	Fully
Stackable	No
Surface Mount Compatible (SMC)	No
Temperature Range - Operating	-40°C to +105°C
Termination Interface: Style	Through Hole



Series image - Reference only

EU ELV

Not Relevant

EU RoHS

Compliant

REACH SVHC

Not Contained Per
-ED/79/2015 (17
December 2015)

Halogen-Free

Status

Not Low-Halogen

**Need more information on product
environmental compliance?**

Email productcompliance@molex.com
Please visit the [Contact Us](#) section for any
non-product compliance questions.

China ROHS
ELV

Green Image
Not Relevant

Search Parts in this Series

[70543 Series](#)

Mates With

SL™ Crimp Housing [70066 Option N](#), [70066 Option G](#), [70066 Option A](#), [70430 Option G](#), [70400 Option G](#)

Electrical

Current - Maximum per Contact	3.0A
Voltage - Maximum	250V

Solder Process Data

Duration at Max. Process Temperature (seconds)	003
Lead-free Process Capability	WAVE
Max. Cycles at Max. Process Temperature	001
Process Temperature max. C	260

Material Info**Reference - Drawing Numbers**

Product Specification	PS-70400, RPS-70543-001
Sales Drawing	SDA-70543-****
Test Summary	TS-70541-001, TS-70541-100

This document was generated on 04/15/2016

PLEASE CHECK WWW.MOLEX.COM FOR LATEST PART INFORMATION