



ENSA-LC1

Light Control Sensor (Photocell)



INSTRUCTION MANUAL

www.ensalife.com



Thanks for choosing the ENSA-LC1 light-control sensor!

The product can turn on or turn off light automatically according to ambient-light. Ambient temperature and humidity can't affect it. It is not only convenient but also practical; it can control the light working only at night. It is used for road light, garden light etc.

SPECIFICATION:

Power source: 220-240V/AC

Power Frequency: 50Hz

Rated Current: 10A

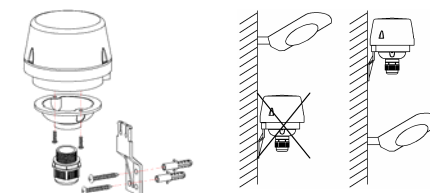
Ambient Light: <5-50 LUX (adjustable)

Working Temperature: -20~+40°C

Working Humidity: <93%RH

INSTALLATION:

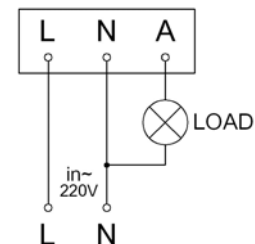
- Loosen two screws in the bottom and unload the black knob and plastic cover.
- Pass the wire through the black knob and plastic cover and connect the wire as per the Connection-wire diagram. And then install back the black knob and plastic cover.



FIGUER INCORRECT CORRECT

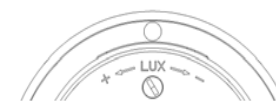
- Please install the photocell in the correct orientation with the plastic bracket and according to the correct installation place, install the photocell with the enclosed inflated screws. (See the figure on the right).

CONNECTION-WIRE DIAGRAM:



TEST:

- Slide the LUX knob to position (-) and switch on the power.
- When you test in daytime. You should cover a black opaque cloth on the product.
- When the cloth mantles the detection window of the photocell, the ambient light of the photocell is less than 5 LUX, the lamp will be on.
- When you take off this cloth, the lamp will be off automatically.
- When you slide the LUX knob to position (+), the lamp could be on in the ambient light less than 50LUX.



NOTE:

- In front of the photocell, it should be no obstruction affecting to accept natural light;
- In front of the photocell, it should be no swaying object.
- Don't install the photocell under the light or in the place where the light will be irradiated to the photocell.