

23" Class Full HD IPS LED Monitor (23" Diagonal)

23MP68VQ-P

 ZOOM



Key Features

IPS/color calibrated | New cinema screen | AMD Freesync(HDMI) | Black stabilizer

Where to Buy

Add to Compare | PRINT | SHARE 

★★★★★ 0/5

Based on 0 user reviews

STOCK LIST



Visit Store



Visit Store



Enjoy Outstanding Color Expression

An immersive work environment is ensured through realistic colour expression thanks to sRGB over 99 percent and the IPS display.

ArcLine Stand

The coexistence of smoothness and solidness in the curved structure. The beauty of ArcLine is the icing on the cake.

ArcLine

FreeSync OFF

FreeSync ON



VS

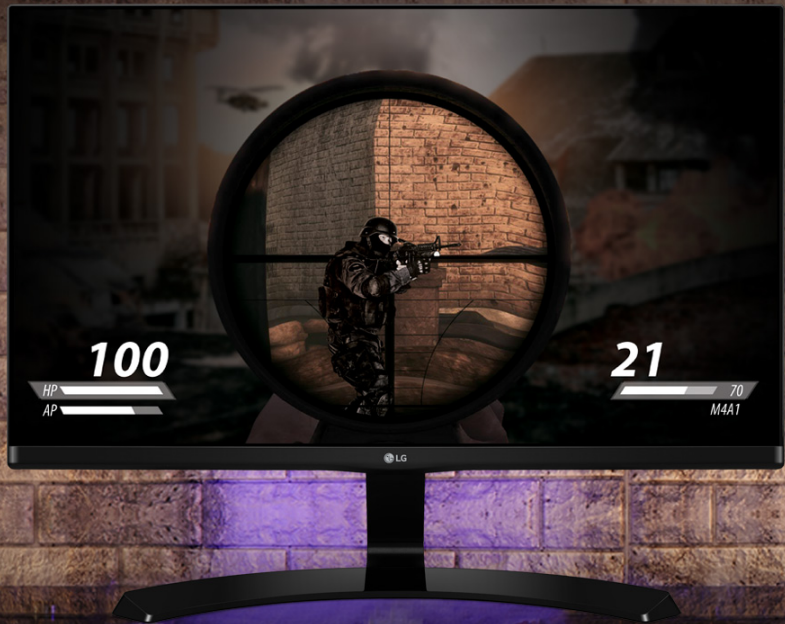


Enjoy Smoother Game Play

MP68 especially adapted to AMD FreeSync™ technology which eliminates tearing from the low frame rate and also screen stuttering as connecting HDMI port. All of these bring that you can enjoy and immerse in game play.

Black Stabilizer
ON

Black Stabilizer

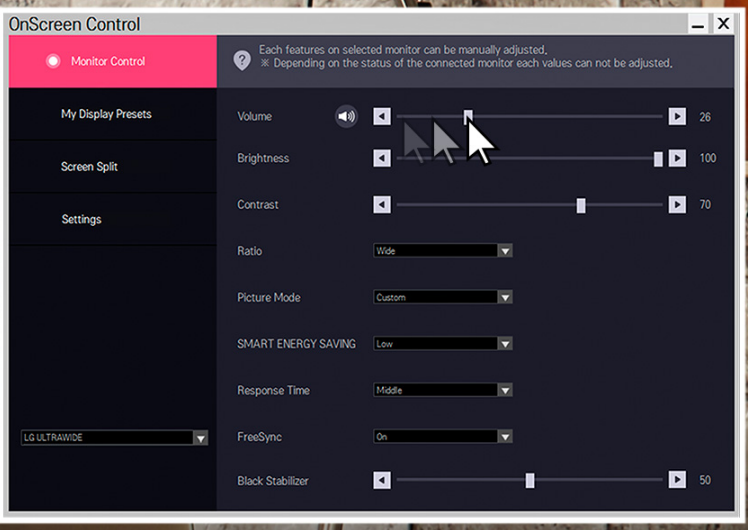
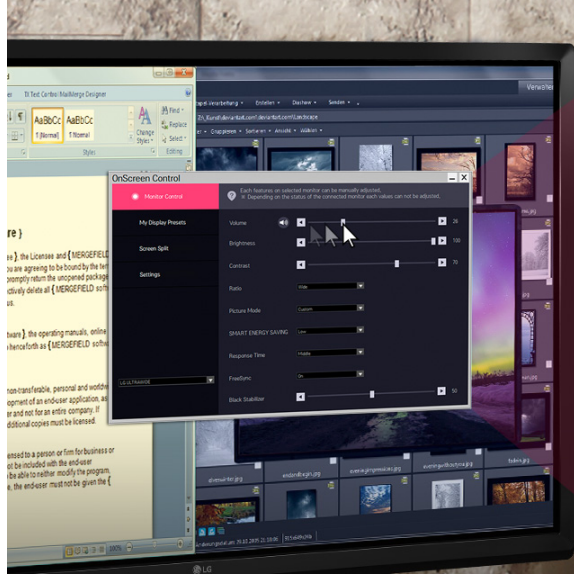
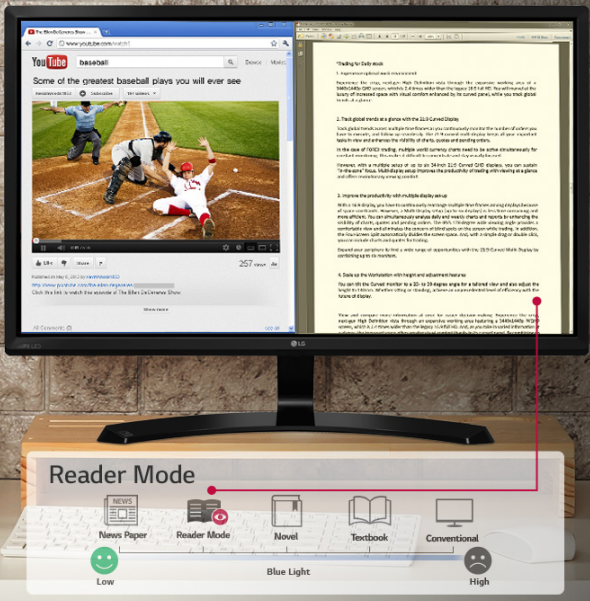


Immerse Yourself in the Game

The Black Stabilizer allows you to have better visibility, even in dark scenes.

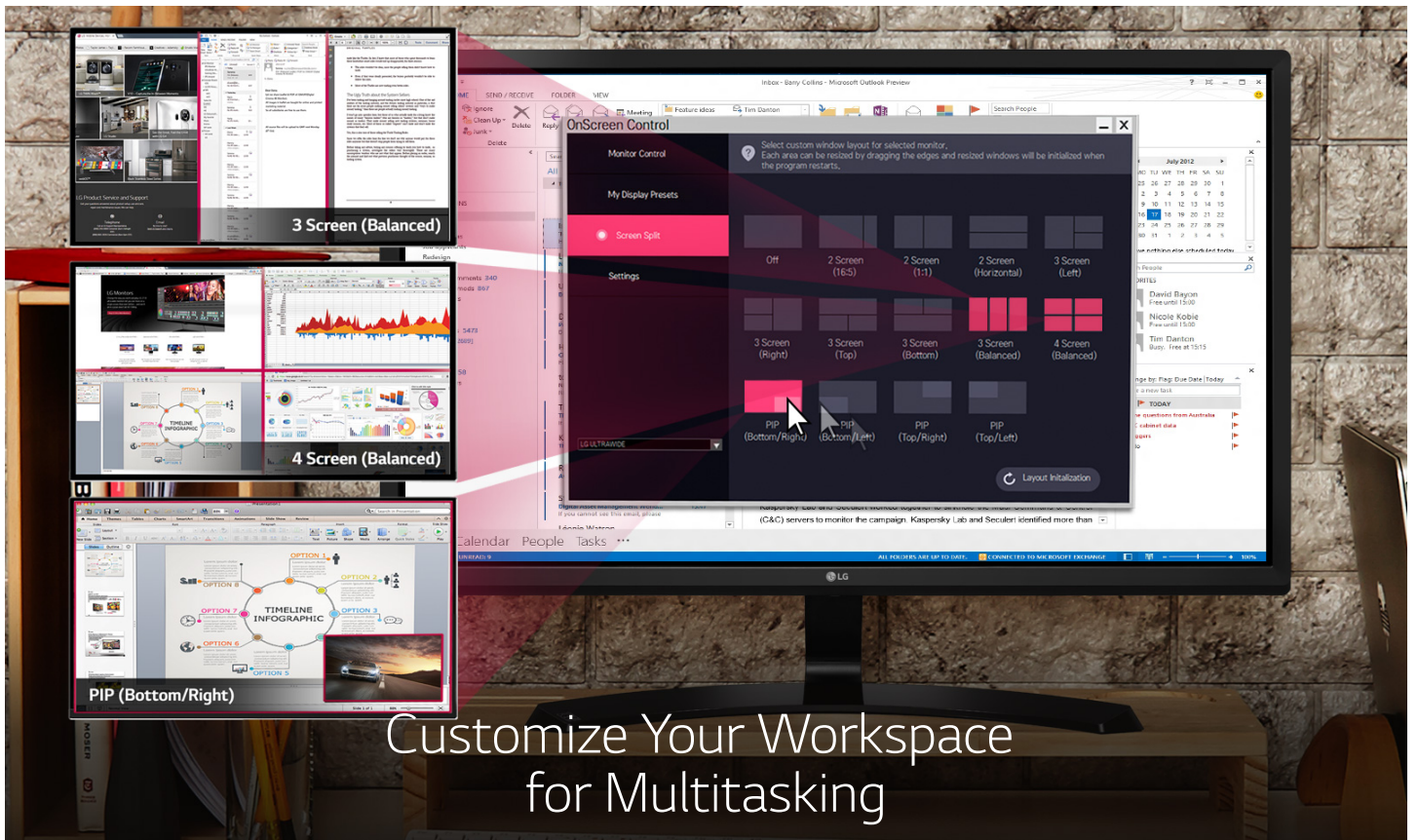
Protect Your Eyes and View in Comfort

Flicker Safe and Reader Mode help maximize visual comfort by protecting your eyes from harmful blue light and reducing the flicker level to almost zero.



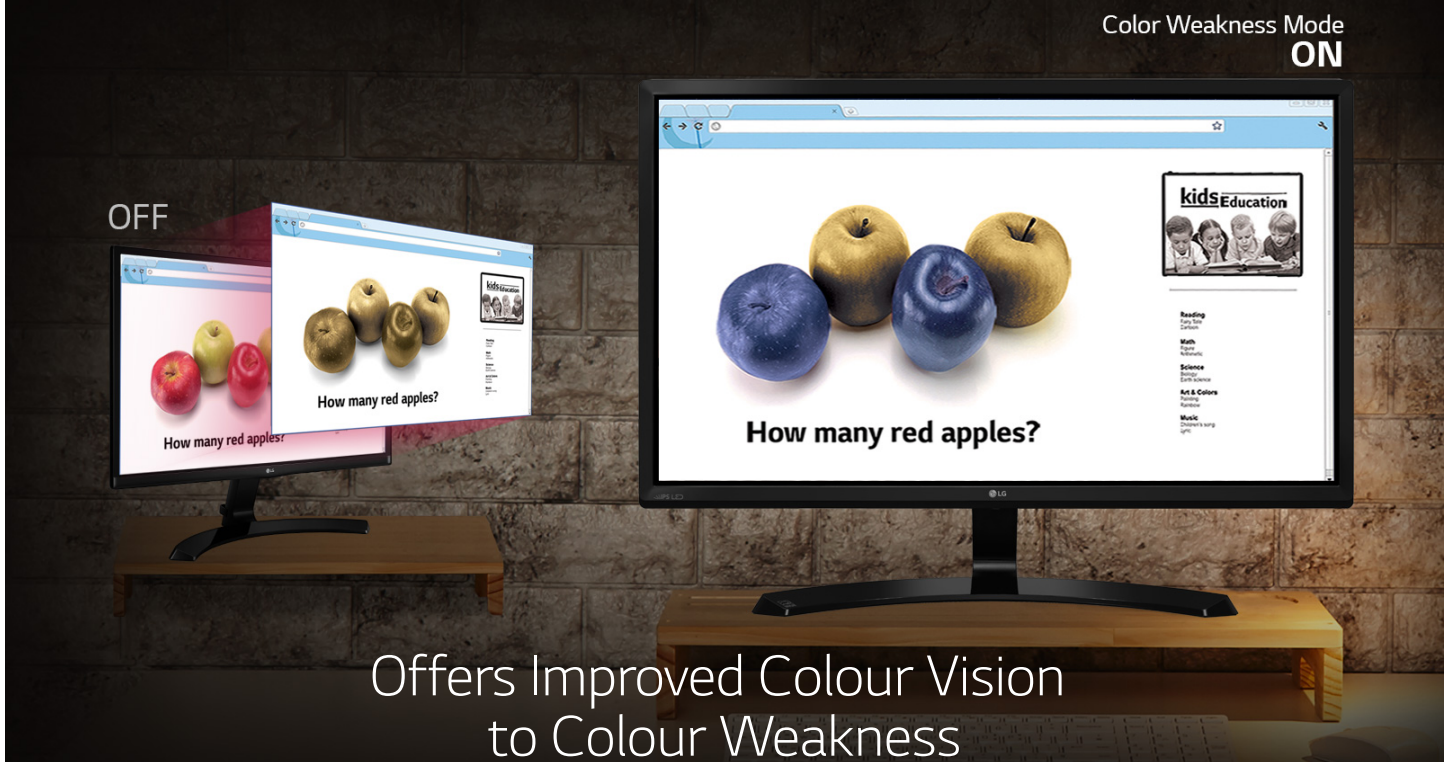
Preset Customized Options with just a Click

OnScreen Control and My Display Presets allow you to easily customize monitor settings with a few clicks of a mouse.



Customize Your Workspace for Multitasking

Screen Split divides the display for different tasks by resizing the windows on the screen. With PIP Mode you can work while watching a video in a window floating on the screen.



Offers Improved Colour Vision to Colour Weakness

Colour revision algorithms are used to help those with colour weakness who have difficulty distinguishing certain ranges of colours can view all the important content.

General

Size(Inch / cm)	23"/ 58.42cm
Panel Type	IPS (Neo blade I)
Color Gamut (CIE1931)	72%
Color Depth(Number of Colors)	1 6.7M colors
Pixel Pitch (mm)	0.2652 x 0.2652
Aspect Ratio	16:9
Resolution	1920 x 1080
Brightness(Typ.)	250cd/m2
Contrast Ratio(Original)	1000:1
(DFC)	Mega
(GTG)	5ms
Viewing Angle(CR≥10)	178/178
Surface Treatment	Anti glare ,3H

Weight (Kg)

Set (with Stand)	3.1
Set (without Stand)	2.7
Box	4.3

Stuffing

Individual(20ft/40ft/40ft HC)	864 / 1920 / 2280
Pallet(20ft/40ft/40ft HC)	675 / 1575 / 1785

Jack Input / Output

D-Sub	Yes
-------	-----

DVI-D	Yes
HDMI	Yes
[Jack Location]	Back
Headphone Out	Yes

Power

Type	Adapter
Input	100-240Vac, 50/60Hz
Consumption(Normal On(EPA))	13.9W
Normal On(typ.)	19.1W
Sleep Mode(Max)	Under 0.3W
DC Off(Max)	Under 0.3W

Frequency

D-sub(H-Frequency)	30kHz~83kHz
D-sub(V-Frequency)	56Hz~75Hz
HDMI(H-Frequency)	30~83kHz
HDMI(V-Frequency)	56~75Hz

Resolution

PC(D-sub)	1920 x 1080
Digital (DVI-D / HDMI)	1920 x 1080
Video(HDMI)	1080P

Control Key

Key Number (Power Key Included)	1
Key Type	Joystick

LED Color(On mode)	White
LED Color(Power save mode)	White Blinking
[Key Location]	Bottom

OSD

Language(Country)	English, Germanic, French, Spanish, Italian, Swedish, Finnish, Portuguese, Polish, Russian, Greek, Chinese, Japanese, Korean, Ukrainian, Portuguese(brazil), Hindi,Traditional Chinese
Number of Language	18

Special Feature

Picture Mode	Custom, Reader 1, Reader 2, Photo, Cinema, Game, Color weakness
Reader Mode	Yes
Original Ratio	Yes
Freesync	Off(Default)
DDC/CI	Yes
HDCP	Yes
Intelligent Auto (Auto Adjustment)	Yes
Key Lock	Yes
Plug & Play	Yes
Response Time Control	Yes
Color weakness	Yes
Flicker Safe	Yes
Automatic standby	Yes
Six Axis Control	Yes
Smart Energy saving	Yes
Super Resolution+	Yes
4 screen split	Yes
FreeSync	Yes

On Screen Contol	Yes
Others	Black stabilizer

Color

Front	Black high glossy
B/Cover	Black high glossy
Stand	Black high glossy / Texture
Base	Black high glossy / Texture
Others	Black high glossy

Stand

Base Detchable	Yes
Tilt(Angle)	-2 ~ 15 Degree

Size/Weight

Set (with Stand)(Dimension)	523.9 x 186.8 x 406.1
Set (without Stand)(W*D*H)	523.9 x 91.7 x 311.7
Box(cm)	593 x 381 x 139
Wall Mount size (mm)	75 x75

Wrap

Packing Material	EPS
Stacking Type	Face Down
Stand Packing Type	None
Box Printing Type	Flexo
Handle	Hand Hole

Standard

UL(cUL)	Yes
TUV-Type	Yes
FCC-B, CE	Yes
EPA 7.0	EPA7.0
Erp	Yes
EPEAT(USA)	Yes (Gold)
EPEAT(Germany)	Yes (Gold)
Windows	Yes (win10)
Others(CCC,KC)	Yes

Accessory

Power Cord	Option
D-Sub	Option
Stand body	Yes
Stand base	Yes
Cable holder	Yes
CD	Yes
ESG	Yes
Manual	Yes
DVI-D	Option
HDMI	Option

ECO

[More Compliance Information](#)

WHAT PEOPLE ARE SAYING

USER REVIEWS

BE THE FIRST TO WRITE A REVIEW

WRITE YOUR OWN REVIEW

QUESTIONS? LET US HELP

Product Support

Simply choose a support option from the icons below:



Email

Send an Email to LG Customer Support to receive a response from an LG support representative.



Phone

Call an LG Support Representative on
UK : 0344-847-5454
IE : 01-686-9454
Monday to Saturday: 9am to 6pm
Sunday: Closed
Bank Holidays: Closed



Live Chat

You can chat with LG Support Representative in real time!
Monday to Saturday: 9am to 5pm
Sunday: Closed
Bank Holidays: Closed



RECENTLY VIEWED





23" Class Full HD IPS
LED Monitor (23"
Diagonal)

23MP68VQ-P



22" Class Full HD IPS
LED Monitor (22"
Diagonal)

22MP68VQ-P



20" Class Full HD LED
Monitor (19.5"
Diagonal)

20M38A

