

# PRODUCT INFORMATION SHEET



CONNECT  
**GEAR**  
Ultimate Connectivity

## Single Faceplate

**A single faceplate can be used to hold up to two snap-in RJ45 modules.**

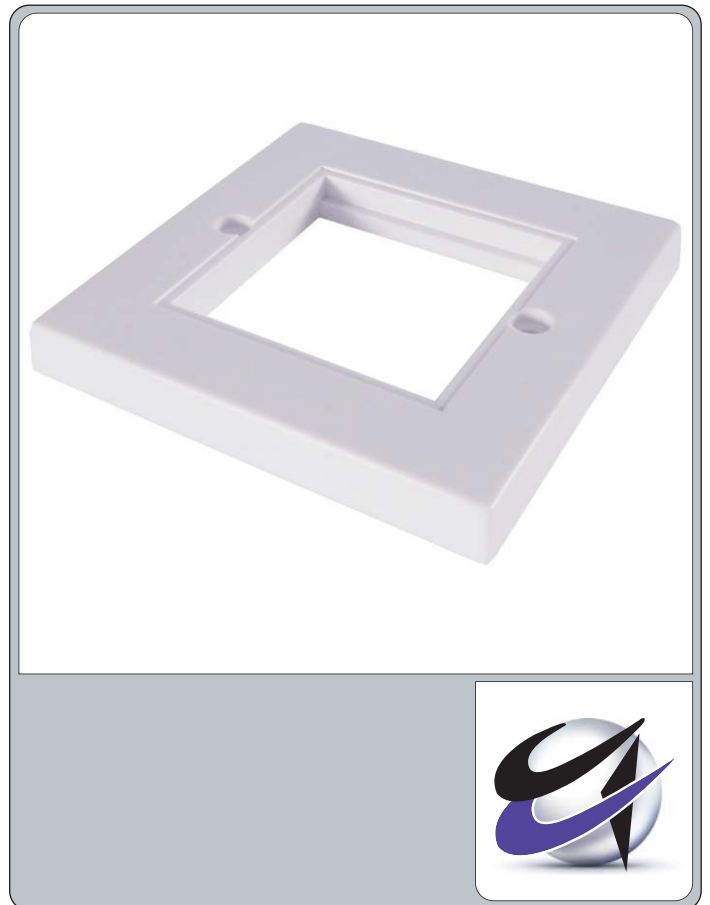
Compatible with standard single backboxes.

### FEATURES

- Suitable for Cat 5e, Cat 6 & LAN modules
- Quick and easy to use, simply screw into a single backbox
- Features a Euro cut out
- Includes fixing screws

### SPECIFICATIONS

- Outer dimensions: 85 x 85mm
- Cut-out dimensions: 50 x 50mm
- Colour: White



CODE

DESCRIPTION

90-0100

Single Faceplate