

# Reversible USB A to Reversible Micro USB 2.0

## Specification

Quickly connect your device without looking. Fully reversible USB, compatible with any devices with a Micro USB connector. The USB and the Micro USB connectors are fully reversible and can be plugged in both ways - up and down.



Part Number	Specification	Length
CPUSBR1-0.5M	USB2.0, Reversible USB A (Male) to Reversible Micro USB (Male), STRAIGHT PLUG, 28+28AWG, 7*0.12TC*1P+7*0.12*2C+32*0.12CCAM, OD3.5MM, BLK	0.5M
CPUSBR1-1M		1M
CPUSBR1-1.8M		1.8M
CPUSBR1-3M		3M

# Reversible USB A to Reversible Micro USB 2.0

## Technical Drawing

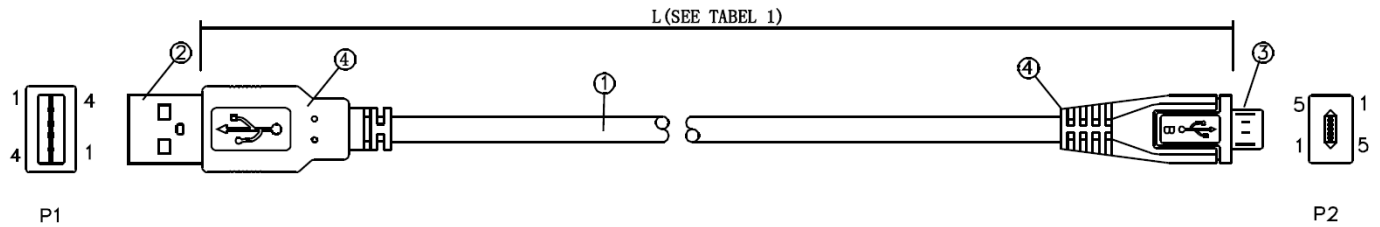
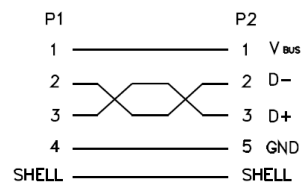


TABLE 1

PART NO.:	LENGTH(L)
USB AM/MICRO B	500 <sup>+10</sup> <sub>0</sub>
	1000±20
	1800±20
	3000±30

Unit: MM

PIN ASSIGNMENT:



4	USB Plug	45P Black PVC
3	USB Connector	USB Micro 5P Nickel Plated
2	USB Connector	USB AM Nickel Plated
1	Cable	28/1P (7*0.12TC) +28/2C (7*0.12TC) +32*0.12CCAM OD3.5MM PVC Jacket Black