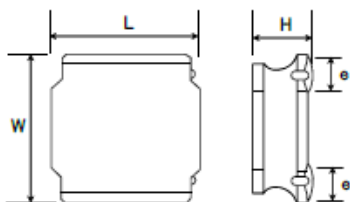


SMD Power Inductors (NR series)

NR3015T1R0N



■ Features

- Item Summary
1.0uH \pm 30%, 2.1A, 3.0x3.0x1.5mm
- Lifecycle Stage
Mass Production
- Standard packaging quantity (minimum)
Taping Embossed 2000pcs

■ Products characteristics table

Inductance	1.0 uH \pm 30 %
Case Size (mm)	3.0x3.0
Rated Current (max)	2.1 A
Saturation Current (max)	2.1 A
Temperature Rise Current (max)	2.1 A
DC Resistance (typ)	30 m Ω
DC Resistance (max)	36 m Ω
LQ Measuring Frequency	100 kHz
Self Resonant Frequency (min)	100 MHz
Operating Temp. Range	-25 to +120 °C (Including-self-generated heat)
RoHS2 Compliance	Yes
REACH Compliance	Yes
Soldering	Reflow

■ External Dimensions

Dimension L	3.0 \pm 0.1 mm
Dimension W	3.0 \pm 0.1 mm
Dimension H	Max 1.5 mm
Dimension e	0.9 \pm 0.2 mm

■ Recommended Land Patterns

【推奨ランドパターン】
実装上の注意
・実装状態を確認の上ご使用くださいますようお願いいたします。
・本製品のはんだ付けはリフローはんだ工法に限りします。

【Recommended Land Patterns】
Surface Mounting
・Mounting and soldering conditions should be checked beforehand.
・Applicable soldering process to these products is reflow soldering only.

