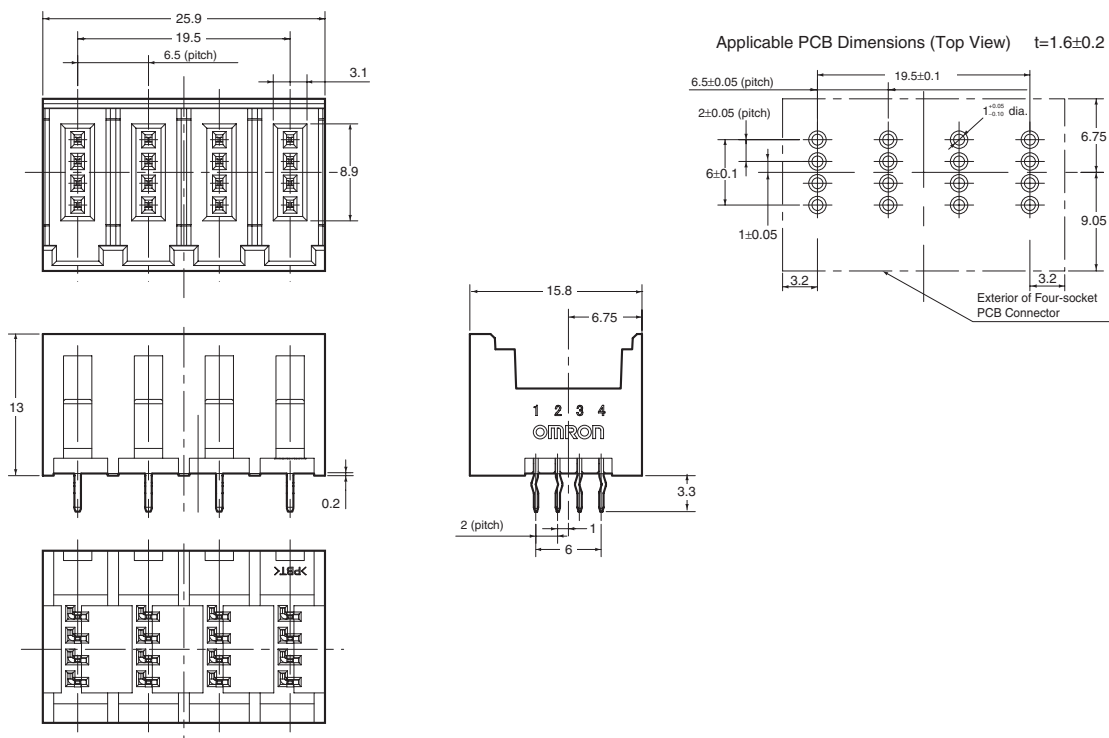


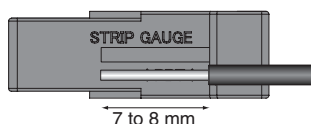
**Four-socket PCB Socket Connector**  
**XN2D-4471**



**Assembly Instructions**

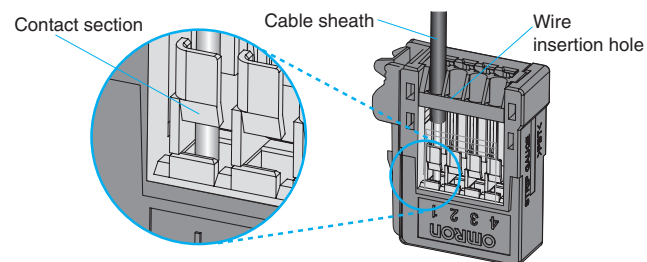
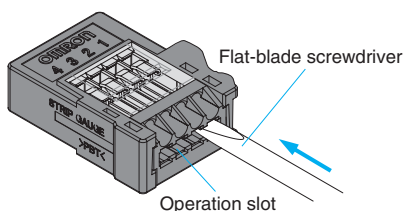
**Preparing the Cable**

Align the cable with the guide marked STRIP GAUGE on the side of the Connector, strip 7 to 8 mm of the cable sheath, and then twist the wires several times.

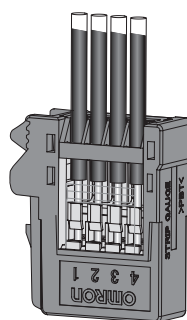
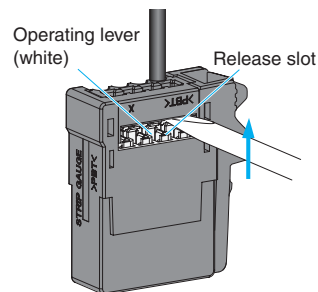


**Connecting the Cable to the Connector**

- (1) Use a flat-blade screw-driver to push down the operating lever inside the operation slot until it locks.
- (2) Insert the wire fully to the back of the wire insertion hole. Make sure that the cable sheath is inserted into the hole, and that the end of the wire has passed through the contact section.



- (3) Insert the screwdriver into the release slot, and gently pull back the lever until a click is heard by resetting the lever.



- (4) Make sure that the following operations have been performed.
  - Check that the operating lever is reset.
  - Check that the procedure in step 2 has been followed. (Pull gently on the cable to make sure that there is resistance, indicating that the Connectors are wired correctly.)

**Removing Cables from the Connector**

- (1) Press down on the operating lever to lock the lever before removing the cable.
- (2) After removing the cable from the Connector, always reset the operating lever, except when rewiring the Connector. The Connector can be rewired without resetting the operating lever.

