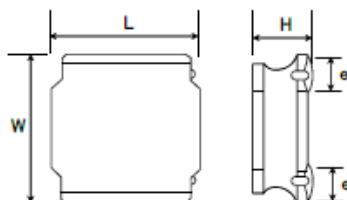


## SMD Power Inductors (NR series H type)

## NRH2410T100MN



## ■ Features

- Item Summary  
10uH $\pm$ 20%, 0.45A, 2.4x2.4x1.0mm
- Lifecycle Stage  
Mass Production
- Standard packaging quantity (minimum)  
Taping Embossed 2500pcs

## ■ Products characteristics table

Inductance	10 uH $\pm$ 20 %
Case Size (mm)	2.4x2.4
Rated Current (max)	0.45 A
Saturation Current (max)	0.55 A
Temperature Rise Current (max)	0.45 A
DC Resistance (typ)	0.69 $\Omega$
DC Resistance (max)	0.828 $\Omega$
LQ Measuring Frequency	100 kHz
Self Resonant Frequency (min)	32 MHz
Operating Temp. Range	-25 to +120 $^{\circ}$ C (Including-self-generated heat)
RoHS2 Compliance	Yes
REACH Compliance	Yes
Soldering	Reflow

## ■ External Dimensions

Dimension L	2.4 $\pm$ 0.1 mm
Dimension W	2.4 $\pm$ 0.1 mm
Dimension H	Max 1.0 mm
Dimension e	0.6 $\pm$ 0.2 mm

## ■ Recommended Land Patterns

【推奨ランドパターン】  
実装上の注意  
・実装状態を確認の上ご使用くださいますようお願いいたします。  
・本製品のはんだ付けはリフローはんだ工法に限りします。

【Recommended Land Patterns】  
Surface Mounting  
・Mounting and soldering conditions should be checked beforehand.  
・Applicable soldering process to these products is reflow soldering only.

