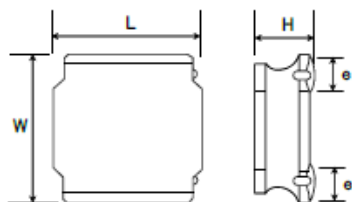


SMD Power Inductors (NR series)

NR3015T150M



■ Features

- Item Summary
15uH±20%, 0.56A, 3.0x3.0x1.5mm
- Lifecycle Stage
Mass Production
- Standard packaging quantity (minimum)
Taping Embossed 2000pcs

■ Products characteristics table

| | |
|--------------------------------|---|
| Inductance | 15 uH ± 20 % |
| Case Size (mm) | 3.0x3.0 |
| Rated Current (max) | 0.56 A |
| Saturation Current (max) | 0.56 A |
| Temperature Rise Current (max) | 0.56 A |
| DC Resistance (typ) | 0.36 Ω |
| DC Resistance (max) | 0.432 Ω |
| LQ Measuring Frequency | 100 kHz |
| Self Resonant Frequency (min) | 23 MHz |
| Operating Temp. Range | -25 to +120 °C (Including-self-generated heat) |
| RoHS2 Compliance | Yes |
| REACH Compliance | Yes |
| Soldering | Reflow |

■ External Dimensions

| | |
|-------------|-------------|
| Dimension L | 3.0 ±0.1 mm |
| Dimension W | 3.0 ±0.1 mm |
| Dimension H | Max 1.5 mm |
| Dimension e | 0.9 ±0.2 mm |

■ Recommended Land Patterns

【推奨ランドパターン】
実装上の注意
・実装状態を確認の上ご使用くださいますようお願いいたします。
・本製品のはんだ付けはリフローはんだ工法に限ります。

【Recommended Land Patterns】
Surface Mounting
・Mounting and soldering conditions should be checked beforehand.
・Applicable soldering process to these products is reflow soldering only.

