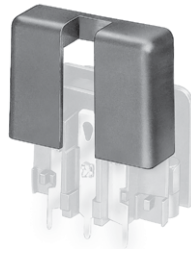
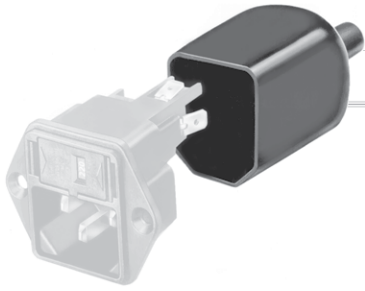


Rear Cover



E.g. KEA with rear cover

E.g. Rear cover for GSF1

The protective covers may not be worked with hot air



Description

- 1 Function
- Insulation cover rear-side
- Material: PVC black, UL 94V-0

Weblinks

[pdf-datasheet](#), [html-datasheet](#), [General Product Information](#), [Approvals](#), [CE declaration of conformity](#), [RoHS](#), [CHINA-RoHS](#), [REACH](#), [Mating Connectors](#), [e-Shop](#), [SCHURTER-Stock-Check](#), [Distributor-Stock-Check](#), [CAD-Drawings](#), [Accessories](#), [Detailed request for product](#)

The terminals of the Schurter appliance couplers can be protected against unintentional contact by the use of an insulation cover on the rear side. They are made of black PVC and can be easily mounted from the rear to the corresponding appliance couplers.

All Variants

Suitable for	Order Number
GSF1	0098.0078
C20F, C22F, DC11, DC12, KEA, KEB1, 1092, 4707, 4721, 4723, 4793, 4798, 5130, 5707, 6200, 6202, 6205, 6220, 6600-3, 6600-4, 6600-5, 6600-9, 6602-4	0859.0047
FGS, KFS, KFX, 5003, 5110, 5120, 5123, 6067, 6100-3, 6100-4, 6100-9, 6102-3, 6102-5, 6102-9	0859.0048
DC12, KEC, KFA, KFB1, KFC	0859.0072
FKG, FKX, FKHD, FKJ, FKID, KD, 5145, 6135, 6145, 6762, 6765	0859.0074
KEB2, KFB2, 0723, 4719, 4797, 5200, 5220	0859.0075
DD12, EC11, KE, KM, KMF	0859.0076
CD	0859.0077
8843.FL, 8843.FLR	0859.0086
CE, EC12, KE	0859.0108
CG, DF11, DF12, DF12_Dummy, EF11, EF12, KG	0859.0109
1061, 6010, 6015, 6061, 6062, 6063, 6065, 6066, 6067, 6100-3, 6100-4, 6102-3, 6102-5, 6110-3, 6110-4, 6120-3, 6120-5	4311.9401
1061, 6010, 6015, 6061, 6062, 6063, 6065, 6066, 6067, 6100-3, 6100-4, 6102-3, 6102-5, 6110-3, 6110-4, 6120-3, 6120-5	4311.9402
DC11, KEA, KEB1, 1060, 1062, 1064, 1065, 1066, 1074, 1092, 4707, 6200, 6202, 6205, 6220	4311.9403

Most Popular.

Availability for all products can be searched real-time: <http://www.schurter.com/en/Stock-Check/Stock-Check-SCHURTER>

Packaging unit 100 Pcs