

## ZB4BS52

圆形头 用于按钮 Ø 22 - 旋转释放 - 蘑菇头 Ø 40 mm - 黑



### 主要

产品系列	Harmony XB4
产品类型	非发光式按钮头
产品名	ZB4
基座材料	镀镍金属
安装直径	22 mm
每件单独销售数量	1
信号单元头形状	圆形
操作头类型	锁定
复位	转动复位
操纵杆外形	黑 蘑菇头 Ø 40 mm 未标记

### 补充信息

产品宽度	40 mm
产品高度	40 mm
CAD外型舷高	57 mm
产品重量	0.07 kg
机械寿命	300000 次
Electrical composition code	C11 适用<= 3 contacts using 单个 blocks in 前端安装 C15 适用1 contacts using 单个 blocks in 前端安装 C7 适用<= 4 contacts using 单个 blocks in 前端安装 C8 适用<= 4 contacts using single and double blocks in 前端安装 C10 适用<= 4 contacts using single and double blocks in 前端安装

### 环境

保护措施	TH
贮存环境温度	-40...70 °C
运行温度	-25...70 °C
过电压种类	Class I 符合 IEC 60536
IP 保护等级	IP66 符合 IEC 60529
NEMA防护等级	NEMA 13 NEMA 4X
IK 保护等级	IK03 符合 IEC 50102
符合标准	EN/IEC 60947-1 EN/IEC 60947-5-1 EN/IEC 60947-5-4 EN/IEC 60947-5-5 JIS C 4520 UL 508 CSA C22.2 No 14
产品认证	BV CSA DNV GL LROS (Lloyds register of shipping) RINA 经UL认证
抗振动	5 gn (f = 2...500 Hz) 符合 IEC 60068-2-6
抗冲击	30 gn (持续时间 = 18 ms) 适用正弦半波加速 符合 IEC 60068-2-27 50 gn (持续时间 = 11 ms) 适用正弦半波加速 符合 IEC 60068-2-27



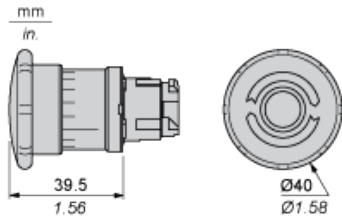
## 供应的可持续性

产品类型	绿色产品认证标志 (Green Premium) 产品
RoHS法规 (日期代码: YYWW)	符合 自从 2008年第10周 - Schneider Electric declaration of conformity
REACH法规	有毒有害物质含量均在REACH规定的限量要求以下
环保符合性	提供支持
回收利用指南	绿色环保产品, 废弃后可以回收利用

## Contractual warranty

阶段	18 months
----	-----------

## Dimensions

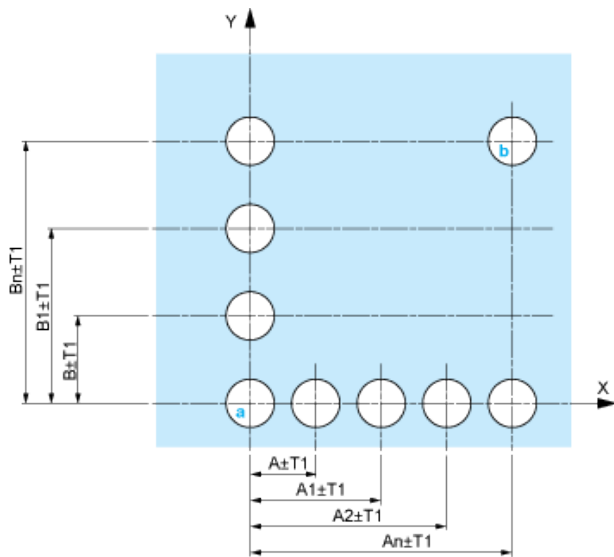


## Panel Cut-out for Pushbuttons, Switches and Pilot Lights (Finished Holes, Ready for Installation)

Connection by Screw Clamp Terminals or Plug-in Connectors or on Printed Circuit Board	Connection by Faston Connectors
<p>Diagram showing the panel cut-out dimensions for screw clamp terminals or plug-in connectors. The dimensions are labeled (1) through (4).</p>	<p>Diagram showing the panel cut-out dimensions for faston connectors. The dimensions are labeled (1) through (6).</p>
<p>(1) Diameter on finished panel or support</p> <p>(2) 40 mm min. / 1.57 in. min.</p> <p>(3) 30 mm min. / 1.18 in. min.</p> <p>(4) <math>\varnothing 22.5 \text{ mm} / 0.89 \text{ in.}</math> recommended (<math>\varnothing 22.3 \text{ mm}_0^{+0.4} / 0.88 \text{ in.}_0^{+0.016}</math>)</p> <p>(5) 45 mm min. / 1.78 in. min.</p> <p>(6) 32 mm min. / 1.26 in. min.</p>	

## Pushbuttons, Switches and Pilot Lights for Printed Circuit Board Connection

### Panel Cut-outs (Viewed from Installer's Side)

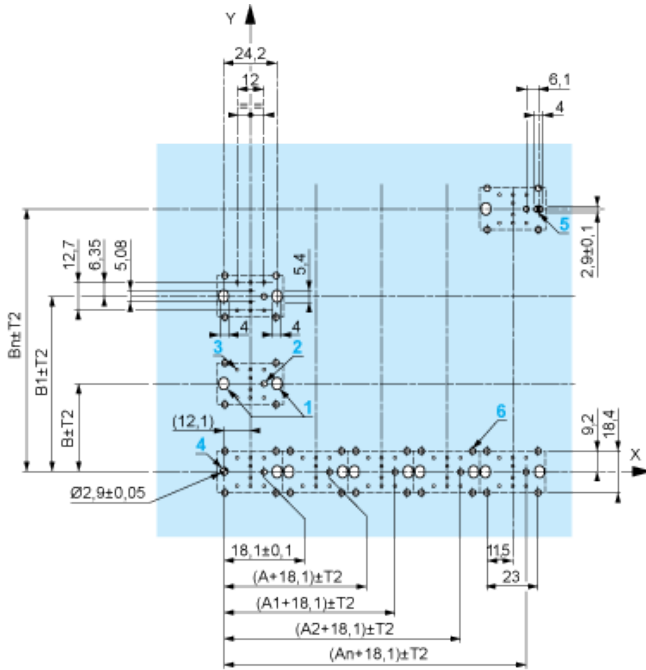


A: 30 mm min. / 1.18 in. min.

B: 40 mm min. / 1.57 in. min.

**Printed Circuit Board Cut-outs (Viewed from Electrical Block Side)**

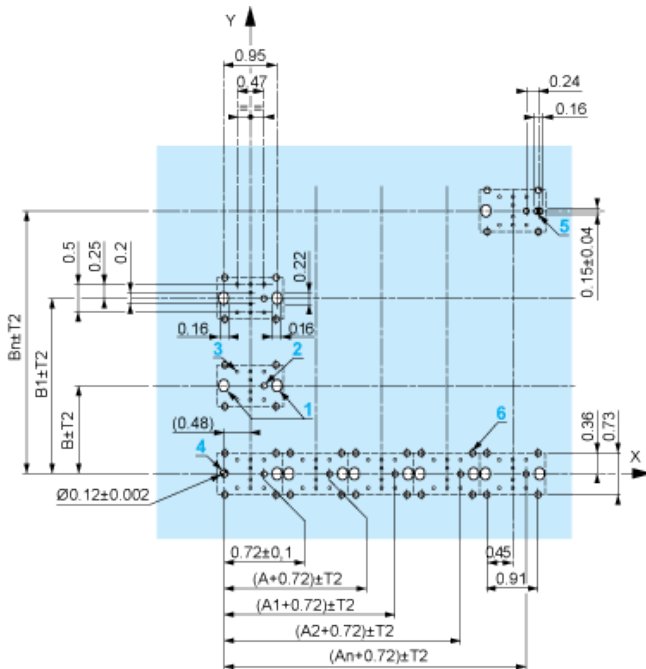
Dimensions in mm



A: 30 mm min.

B: 40 mm min.

Dimensions in in.



A: 1.18 in. min.

B: 1.57 in. min.

### General Tolerances of the Panel and Printed Circuit Board

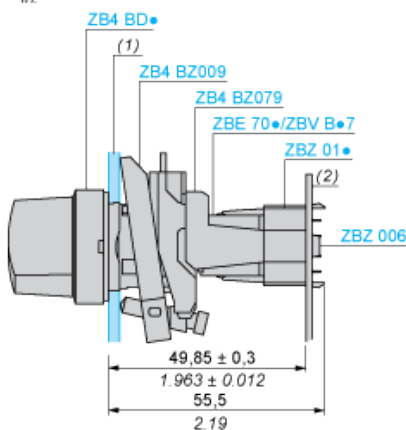
The cumulative tolerance must not exceed 0.3 mm / 0.012 in:  $T1 + T2 = 0.3 \text{ mm max.}$

### Installation Precautions

- Minimum thickness of circuit board: 1.6 mm / 0.06 in.
- Cut-out diameter: 22.4 mm  $\pm 0.1$  / 0.88 in.  $\pm 0.004$
- Orientation of body/fixing collar ZB4 BZ009:  $\pm 2^\circ 30'$  (excluding cut-outs marked **a** and **b**).
- Tightening torque of screws ZBZ 006: 0.6 N.m (5.3 lbf.in) max.
- Allow for one ZB4 BZ079 fixing collar/pillar and its fixing screws:
  - every 90 mm / 3.54 in. horizontally (X), and 120 mm / 4.72 in. vertically (Y).
  - with each selector switch head (ZB4 BD•, ZB4 BJ•, ZB4 BG•).

The fixing centers marked **a** and **b** are diagonally opposed and must align with those marked **4** and **5**.

$\frac{\text{mm}}{\text{in.}}$



(1) Panel

(2) Printed circuit board

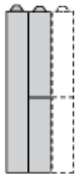
### Mounting of Adapter (Socket) ZBZ 01•

- 1 2 elongated holes for ZBZ 006 screw access
- 2 1 hole  $\text{Ø } 2.4 \text{ mm} \pm 0.05$  / 0.09 in.  $\pm 0.002$  for centring adapter ZBZ 01•
- 3 8  $\times \text{Ø } 1.2 \text{ mm}$  / 0.05 in. holes
- 4 1 hole  $\text{Ø } 2.9 \text{ mm} \pm 0.05$  / 0.11 in.  $\pm 0.002$ , for aligning the printed circuit board (with cut-out marked **a**)
- 5 1 elongated hole for aligning the printed circuit board (with cut-out marked **b**)
- 6 4 holes  $\text{Ø } 2.4 \text{ mm}$  / 0.09 in. for clipping in adapter ZBZ 01•

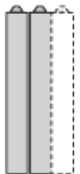
### Electrical Composition Corresponding to Code C7



### Electrical Compositions Corresponding to Code C8



### Electrical Compositions Corresponding to Code C10

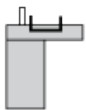


### Electrical Composition Corresponding to Codes C9, C11, SF1 and SR1

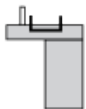


### Electrical Composition Corresponding to Code C15

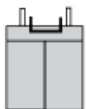
1 N/O



1 N/C



1 N/O + N/C or 1 N/O + N/O or 1 N/C + N/C



### Legend

Single contact



Double contact



Light block



Possible location

