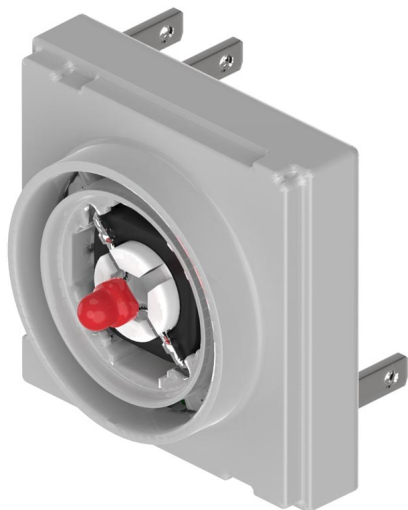


# EAO – Your Expert Partner for Human Machine Interfaces

## 84-8716.6620 - Switching element Halo Compact

### 84-8716.6620 - Switching element Halo Compact



*Attention: The preview is based on a sample product. This can differ from your current configuration.*

#### Other Attributes

Weight 0.013 kg

#### Connection Method

Terminal Solder/Plug-in 2.8 x 0.8 mm

#### Switching element

Switching system Short-travel element  
Contacts 1 NO  
Switching current 0.1 A  
Contact material gold-plated silver

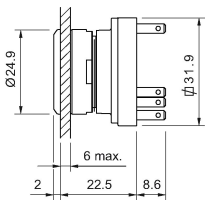
#### Illumination

LED colour blue

# EAO – Your Expert Partner for Human Machine Interfaces

84-8716.6620 - Switching element Halo Compact

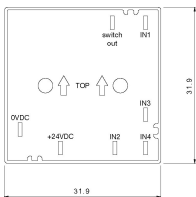
## Dimensions



## Wiring diagram



## Component layout



## Legend

Contacts: NO = Normally open