

Cable and Cord Reels

Industrial Cord Reels



HBL45123C



HBL45123R



HBL50163IN



HBL50162FL



HBL340PB

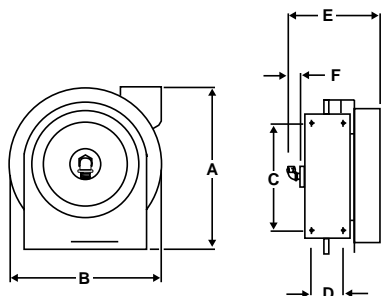
Industrial Cord Reels

Description	Catalog Numbers	Cable Feet	Meters	Volts	Cable Type	Amps	Weight lbs.	kg	Watts (Max)
Reel with HBL5269C connector.	HBL45123C	45	13.7	125	12/3 SJEO	15	23	10.4	1875
Reel with portable outlet box.	HBL45123R	45	13.7	125	12/3 SJEO	15	23	10.4	1875
Reel with incandescent hand lamp.	HBL50163IN	50	15.2	125	16/3 SJT	0.8	21	9.5	100
Reel with fluorescent hand lamp.	HBL50162FL	50	15.2	120V AC	16/2 SJT	0.3	21	9.5	13
Pivot Base	HBL340PB	-	-	-	-	-	5	2.26	-

Note: Supplied with 5 ft. power supply cord with HBL5266C, 15A straight blade plug.

Specifications

Industrial Cord Reels						
In (mm)	A	B	C	D	E	F
	13.00" (330)	12.38" (321)	8.00" (203)	2.50" (64)	9.70" (246.4)	1.25" (32)



Industrial Cord Reels	
Listings/ Certifications	UL 355/CSA C22.2 No. 21.
Operation	Dry, indoor, non-hazardous locations.
Classification	Commercial/Industrial.
Incandescent Lamp	100 watt max., switch, no receptacle.
Fluorescent Lamp	13 watt only.

