

FUSES & FUSEHOLDERS

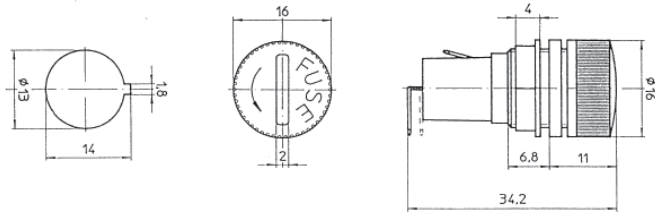
5x20mm Panel Mounting Fuseholders

- Finger/screwdriver release, screw carrier
- Anti-rotation key fixing
- Combined solder/2.8mm quick connect terminals
- Compact
- IEC 127-6
- approved



TYPE NO.
CFH05 Panel mount fuseholder

SPECIFICATION	
Rating	10A/250V
Contacts	Tinned nickel plated Brass
Moulding	UL94-V0 flame retardant PC
Dielectric strength	>3kV
Insulation Resistance	>100MΩ
Power dissipation	2.5W



5x20mm Snap Fit Panel Mounting Fuseholders

- Snap fit panel mounting
- Screwdriver or finger release screw fuse carrier
- Combined solder/2.8mm quick connect terminals
- Anti-rotation D fixing
- IEC 127-6
- CFH08 approved
- CFH11 approved

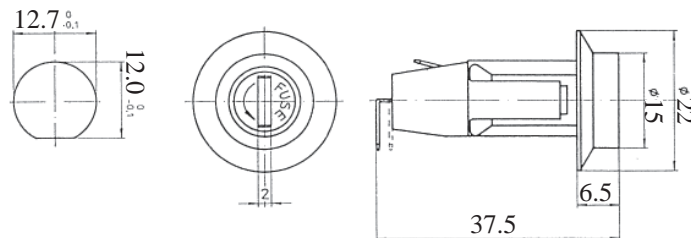
SPECIFICATION		
Rating	CFH08	6.3A/250V
	CFH11	10A/250V
Contacts	Tinned nickel plated Brass	
Moulding	CFH08	UL94-V0 flame retardant PBT
	CFH11	UL94-V0 flame retardant PC
Dielectric strength	CFH08	3kV
	CFH11	1.5kV
Insulation Resistance	>100MΩ	
Power dissipation	CFH08	2.5W

TYPE NO.	CARRIER	RELEASE
CFH08	Screw	Screw Driver
CFH11	Bayonet	Finger

CFH08



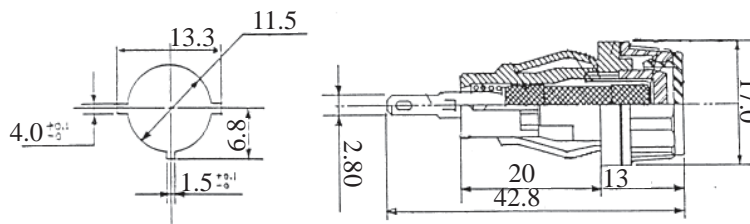
CFH08



CFH11



CFH11



+44 (0)1638 716101
info@camdenboss.com
www.camdenboss.com

We operate a constant improvement policy, our products are subject to change without notice.

Ver 1.0
Iss 1



PCB
TERMINAL
BLOCKS

INTER-
CONNECTION

FUSES &
FUSE-
HOLDERS

LEDs &
INDICATORS

MINIATURE
SWITCHES

LIMIT &
SAFETY
SWITCHES

CONTROL
PRODUCTS

INTERFACE
MODULES &
SUPPORTS

RELAY
BASES

ENCLOSURES

BATTERIES

TRANS-
FORMERS