

# Printed-circuit board connector - PC 35 HC/ 2-GF-15,00 - 1762741

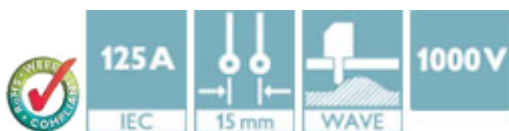
Please be informed that the data shown in this PDF Document is generated from our Online Catalog. Please find the complete data in the user's documentation. Our General Terms of Use for Downloads are valid (<http://phoenixcontact.com/download>)

Header, Nominal current: 125 A, Rated voltage (III/2): 1000 V, Number of positions: 2, Pitch: 15 mm, Color: green, Contact surface: Silver, Mounting: Wave soldering



## Why buy this product

- Well-known mounting principle allows worldwide use
- Double flange for space-optimized screw connection on the housing panel and with the connector



## Key Commercial Data

Packing unit	25 pc
Minimum order quantity	25 pc
GTIN	 4 046356 441018
Weight per Piece (excluding packing)	51.23 g
Custom tariff number	85366990
Country of origin	Poland

## Technical data

### Dimensions

Length	38 mm
Pitch	15.00 mm
Dimension a	15 mm
Constructional height	28.5 mm
Height	33.1 mm
Length of the solder pin	4.6 mm
Pin dimensions	2,4 x 2,5 mm
Pin spacing	11.00 mm
Hole diameter	3.6 mm

### General

Range of articles	PC 35 HC/..-GF
-------------------	----------------

# Printed-circuit board connector - PC 35 HC/ 2-GF-15,00 - 1762741

## Technical data

### General

Insulating material group	IIIa
Rated surge voltage (III/3)	8 kV
Rated surge voltage (III/2)	8 kV
Rated surge voltage (II/2)	8 kV
Rated voltage (III/3)	1000 V
Rated voltage (III/2)	1000 V
Rated voltage (II/2)	1000 V
Connection in acc. with standard	EN-VDE
Nominal current I <sub>N</sub>	125 A
Maximum load current	125 A
Insulating material	PBT
Flammability rating according to UL 94	V0
Color	green
Number of positions	2

### Standards and Regulations

Connection in acc. with standard	EN-VDE
	CUL
Flammability rating according to UL 94	V0

## Classifications

### eCl@ss

eCl@ss 4.0	272607xx
eCl@ss 4.1	27260701
eCl@ss 5.0	27260701
eCl@ss 5.1	27260701
eCl@ss 6.0	27260704
eCl@ss 7.0	27440402
eCl@ss 8.0	27440402
eCl@ss 9.0	27440402

### ETIM

ETIM 3.0	EC001121
ETIM 4.0	EC002637
ETIM 5.0	EC002637

### UNSPSC

UNSPSC 6.01	30211810
UNSPSC 7.0901	39121409
UNSPSC 11	39121409
UNSPSC 12.01	39121409

# Printed-circuit board connector - PC 35 HC/ 2-GF-15,00 - 1762741

## Classifications

### UNSPSC

UNSPSC 13.2	39121409
-------------	----------

## Approvals

### Approvals

#### Approvals

UL Recognized / cUL Recognized / CCA / IEC EE CB Scheme / VDE Gutachten mit Fertigungsüberwachung / EAC / cULus Recognized

#### Ex Approvals

#### Approvals submitted

## Approval details

UL Recognized		
	B	C
Nominal current I <sub>N</sub>	115 A	115 A
Nominal voltage U <sub>N</sub>	600 V	600 V

cUL Recognized		
	B	C
Nominal current I <sub>N</sub>	105 A	105 A
Nominal voltage U <sub>N</sub>	600 V	600 V

CCA
-----

IECEE CB Scheme	
Nominal current I <sub>N</sub>	125 A
Nominal voltage U <sub>N</sub>	1000 V

# Printed-circuit board connector - PC 35 HC/ 2-GF-15,00 - 1762741

## Approvals

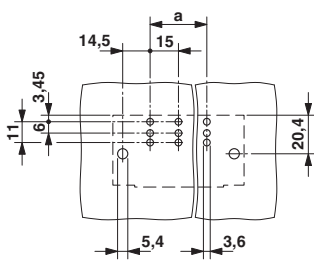
VDE Gutachten mit Fertigungsüberwachung	
Nominal current I <sub>N</sub>	125 A
Nominal voltage U <sub>N</sub>	1000 V

EAC
-----

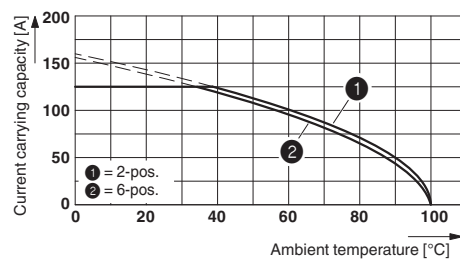
cULus Recognized
------------------

## Drawings

Drilling diagram

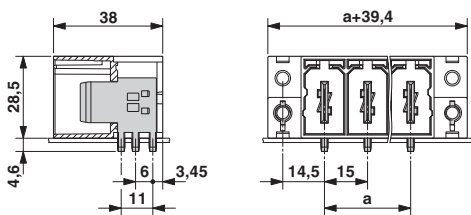


Diagram



Type: PC 35 HC/...-STF-15,00 with PC 35 HC/...-GF-15,00

Dimensional drawing



Dimensional drawing

