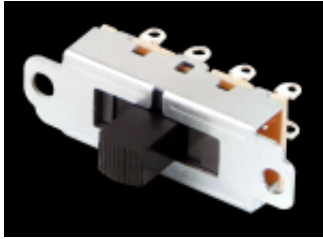




Harsh Environment Connectivity Solutions



46300 Series Slide Switches, 3 Position, 3 Pole

Standard Slide Switches (larger than 1.20"). Three-position switches offer locking-locking, momentary-momentary and locking-momentary action for talk-listen applications. All switches have positive center detent and shutter type dust cover to prevent dirt and dust from contaminating switch contacts.

SPECIFICATIONS

Contact Ratings: 0.5A DC and 3A AC, 125V non-inductive.

Listings: UL recognized, card E40688 CSA certified (marked) switches available on special order only.

Housing: Steel, plated.

Detent Spring: Music wire.

Shim: Black vulcanized fiber.

Knob: Black thermoplastic.

Terminals & Slider Contacts: Copper alloy, silver-plated.

Insulation: Phenolic.

Temperature Range: -4°F to +158°F (-20°C to +70°C).

Dielectric Strength: 1 kV rms @ sea level.

Insulation Resistance: 1 k M(omega) minimum.

SPECIAL ORDER FEATURES:

1. .344 inch (8.74 mm) high knobs are standard; other heights available.
2. Series 46000R switches are CSA marked on special order only.

SOLDER GUARDS

Insulating Solder Guards, P-2370 (2-position): slip over solder lug terminals and prevent solder splashes from entering interior (contact area) of switch. Made of fishpaper .01 inch (.25 mm) thick, Solder Guard slips over terminals quickly and easily. Precision punched slots lock onto terminals, and rectangular shape conforms with dimension of switch terminal board. Minimizes costly production line rework.

Solder Guards can be used on:

*General Purpose, Series 46000R