

M12-Receptacle Connectors In Accordance With IEC 61076-2-101

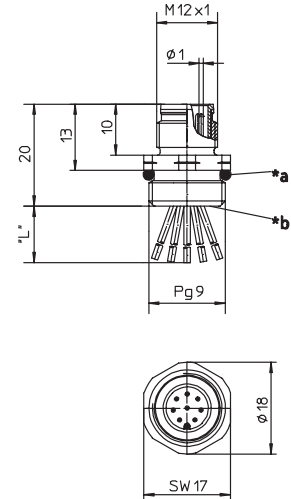
RSF 3...8 | RKF 3...8



Male, 3-, 4-, 5- and 8-Pole

Receptacle, 3-, 4-, 5-, and 8-pole, male, M12 for front mounting, 24 and 22 AWG, panel mount thread PG9.

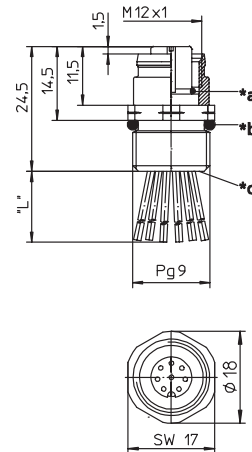
RSF 3...8



Female, 3-, 4-, 5- and 8-Pole

Receptacle, 3-, 4-, 5-, and 8-pole, female, M12 for front mounting, 24 and 22 AWG, panel mount thread PG9.

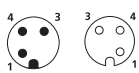
RKF 3...8



Pin Assignments

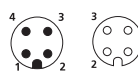
Face Views / M12, Male / Female

3 pole



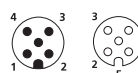
1 = brown
2 = n.c.
3 = blue
4 = black

4 pole



1 = brown
2 = white
3 = blue
4 = black

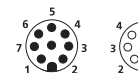
5 pole



1 = brown
2 = white
3 = blue
4 = black
5 = gray

Note for 5 pole receptacles with pin 5 color code of green-yellow see part numbers RSFM 5/0.5M and RKF 5/0.5M

8 pole



1 = white
2 = brown
3 = green
4 = yellow
5 = grey
6 = pink
7 = blue
8 = red



M12-Receptacle Connectors In Accordance With IEC 61076-2-101 RSF 3...8 | RKF 3...8

Technical Data

Environmental

Degree of protection IP 67 / NEMA 6P
Operating temperature range -40°C (-40°F) / +90°C (+194°F)

Mechanical







Housing Brass, nickel-plated
Insert PUR, black (female)
3-, 4- and 5-Pole: Nylon (male)
8-Pole: PUR, black (male)
Contact Brass, gold over nickel-plated

Electrical

Current rating 3-5 Pole: 4 A
8 Pole: 1.5 A
Voltage rating 3 & 4 Pole: 250 V
5 Pole: 60V
8 Pole: 30 V / 36 V DC

Accessories

Panel nut (RSKF 9)

Part Number		Pins	Characteristics
RSF 3/0.5M	RKF 4-3/0.5M	3	 
RSF 4/0.5M	RKF 4/0.5M	4	 
RSF 5/0.5M	RKF 5/0.5M	5	 
RSF 8/0.5M	RKF 8/0.5M	8	