

DIN RAIL BOXES

DIN Rail Standard Height Module Boxes

- Snap fit modular design for ease of assembly and custom kitting
 - Base fits 35mm DIN rail or directly to flat surface
 - Moulded in light grey UL94-V0 flame retardant polycarbonate
 - Carries up to 3 PCBs horizontally or 2 vertically
 - Snap fit terminal cover options for IP20 finger protection
 - Snap in covers available in grey, clear, transparent red and smoked
 - Standard enclosure consists of base, top and rail/wall clips
 - Open top as standard, solid top, vented and extended
- wall options available
 - Covers and terminal guards ordered separately and can be supplied in kits
 - Easily customised covers and terminal guards
 - The Clear, Smoked and Red covers are moulded in PC UL94-HB
 - Grey covers are PC UL94-V0
 - Enclosed base offers isolation from DIN rail
 - Front panel ideal for screen printing and recessed solid top for labels and membranes
 - Other colours and EMC shielding available to order
 - Screws to mount base

CNMB



	BOX LENGTH	HORIZONTAL PCB SIZES			VERTICAL PCB SIZES		PCB FIXING BOSS	
		A	B	C	D	E	X	Y
CNMB/1-	17.5mm	86.5x14mm	57x14mm	41.8x14mm	34x59.6mm	40x14.8mm	6.2mm	18.3mm
CNMB/2-	36mm	86.5x33mm	57x32mm	42x32mm	34x59.6mm	40x33mm	6.2mm	18.3mm
CNMB/3-	53mm	86.5x50mm	57x49mm	42x49mm	34x59.6mm	40x50mm	8.8mm	18.3mm
CNMB/4-	71mm	86.5x68mm	57x67mm	42x67mm	34x59.6mm	40x68mm	8.8mm	18.3mm
CNMB/5-	88mm	86.5x84mm	57x83mm	42x83mm	34x59.6mm	40x84mm	8.8mm	18.3mm
CNMB/6-	106mm	86.5x103mm	57x102mm	42x102mm	34x59.6mm	40x103mm	8.9mm	18.3mm
CNMB/9-	159mm	86.5x156mm	57x155.5mm	42x155mm	34x59.6mm	40x155mm	8.9mm	18.3mm
CNMB/12-	212mm	86.5x208mm	57x207mm	42x207mm	34x59.6mm	40x208mm	8.9mm	18.3mm

For double row terminals covers both sides, add /2 to type No. (e.g. CNMB/3/2)

For single row terminals cover one side only, add /1 to type No. (e.g. CNMB/3/1)

Box supplied with open top as standard

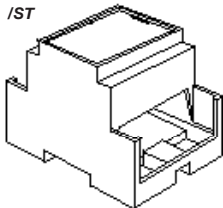
For solid recessed top used for membrane keypads or clear covers to enclose labels, add /ST to type No. (e.g. CNMB/3ST/2)

For cooling vents both sides add /V to type No. (e.g. CNMB/3/V/2)

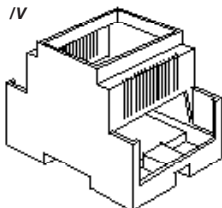
For extended side walls which meet the lower PCB behind terminals, add /W to type No. (e.g. CNMB/3W/2)

19" CABINETS

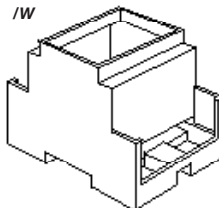
Solid Top /ST



Vented Sides /V



Extended Walls /W

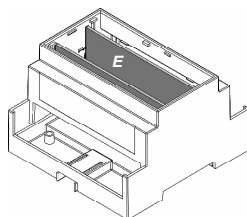
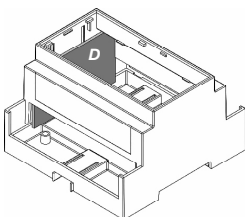


DEVELOPMENT BOARD ENCLOSURES

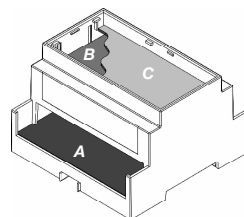
CUSTOM SIZED ENCLOSURES

CUSTOM SERVICES

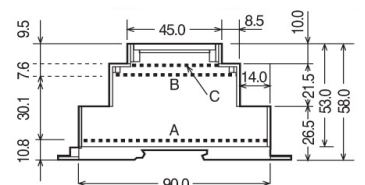
Vertical PCB Positions



Horizontal PCB Positions

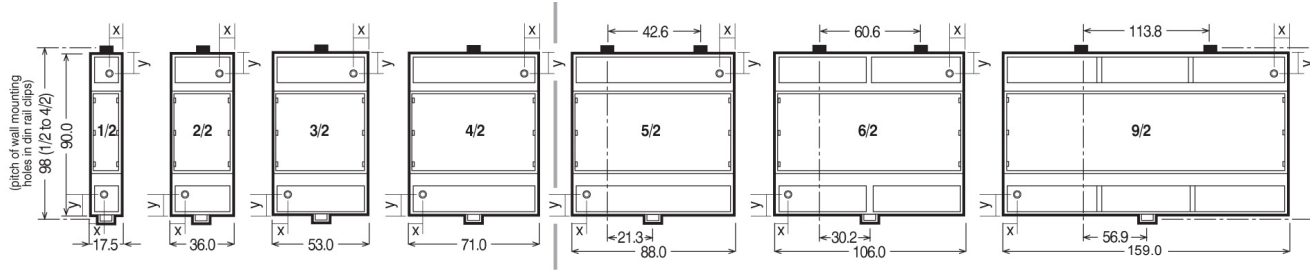


Horizontal PCB Sizes

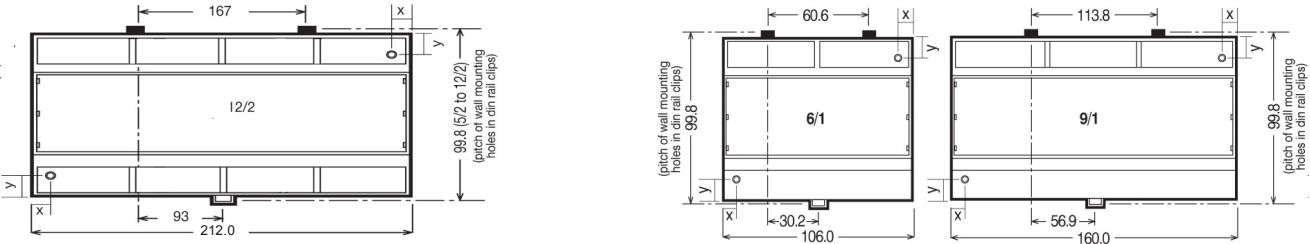


DIN RAIL BOXES

Double Row Terminals/ covers both sides



Single Row Terminals/ covers on one side



Terminal Guards Solid

TYPE NO.	STYLE	A	D	E
CNMB/1/TGS	Solid	17.5mm	15.0mm	14.3mm
CNMB/2/TGS	Solid	35.5mm	29.9mm	13.8mm
CNMB/3/TGS	Solid	52.8mm	45.5mm	13.8mm
CNMB/4/TGS	Solid	70.6mm	59.9mm	13.8mm
CNMB/5/TGS	Solid	87.6mm	79.5mm	13.8mm

*For 6, 9 & 12 Size Module Use CNMB/3TGS

5.08mm pitch perforated

TYPE NO.	STYLE	A	D	E
CNMB/1/TG508P	Solid	17.5mm	15.0mm	14.3mm
CNMB/2/TG508P	Solid	35.5mm	29.9mm	13.8mm
CNMB/3/TG508P	Solid	52.8mm	45.5mm	13.8mm
CNMB/4/TG508P	Solid	70.6mm	59.9mm	13.8mm
CNMB/5/TG508P	Solid	87.6mm	79.5mm	13.8mm

*For 6, 9 & 12 Size Module Use CNMB/3TG508P

5.08mm pitch pre-drilled

TYPE NO.	STYLE	POLES	A	B	C	D	E
CNMB/1/TG508	Pre-Drilled	3	17.5mm	1.0mm	1.0mm	15.0mm	14.3mm
CNMB/2/TG508	Pre-Drilled	6	35.5mm	1.0mm	1.0mm	29.9mm	13.8mm
CNMB/3/TG508	Pre-Drilled	9	52.8mm	1.0mm	1.0mm	45.5mm	13.8mm
CNMB/4/TG508	Pre-Drilled	12	70.6mm	2.7mm	2.7mm	59.9mm	13.8mm
CNMB/5/TG508	Pre-Drilled	15	87.6mm	2.7mm	2.7mm	79.5mm	13.8mm

For 6, 9 & 12 Size Module Use CNMB/3/TG508

7.5mm pitch pre-drilled

TYPE NO.	STYLE	POLES	A	B	C	D	E
CNMB/1/TG750	Pre-Drilled	2	17.5mm	1.0mm	1.0mm	15.0mm	14.3mm
CNMB/2/TG750	Pre-Drilled	4	35.5mm	1.0mm	1.0mm	29.9mm	13.8mm
CNMB/3/TG750	Pre-Drilled	6	52.8mm	1.0mm	1.0mm	45.5mm	13.8mm
CNMB/4/TG750	Pre-Drilled	8	70.6mm	2.7mm	2.7mm	59.9mm	13.8mm
CNMB/5/TG750	Pre-Drilled	10	87.6mm	2.7mm	2.7mm	79.5mm	13.8mm

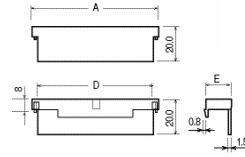
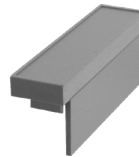
For 6, 9 & 12 Size Module Use CNMB/3/TG750

10.16mm pitch pre-drilled

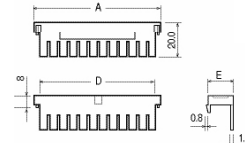
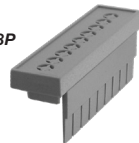
TYPE NO.	STYLE	POLES	A	B	C	D	E
CNMB/1/TG100	Pre-Drilled	2	17.5mm	1.0mm	1.0mm	15.0mm	14.3mm
CNMB/2/TG100	Pre-Drilled	3	35.5mm	1.0mm	1.0mm	29.9mm	13.8mm
CNMB/3/TG100	Pre-Drilled	5	52.8mm	1.0mm	1.0mm	45.5mm	13.8mm
CNMB/4/TG100	Pre-Drilled	6	70.6mm	2.7mm	2.7mm	59.9mm	13.8mm
CNMB/5/TG100	Pre-Drilled	7	87.6mm	2.7mm	2.7mm	79.5mm	13.8mm

For 6, 9 & 12 Size Module use CNMB/3/TG100

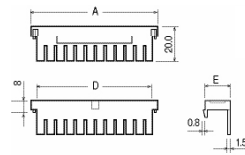
CNMB/ TGS



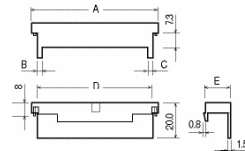
CNMB/ TG508P



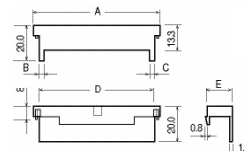
CNMB/ /TG508



CNMB/TG750



CNMB/TG100



UNIVERSAL ENCLOSURES

HAND HELD CASES

HEAVY DUTY ENCLOSURES

DIN RAIL BOXES

INTERFACE SUPPORTS

CONTROL STATIONS

DIECAST & METAL BOXES

DESKTOP & INSTRUMENT CASES

POTTING BOXES

19" ENCLOSURES

19" CABINETS

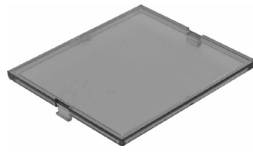
DEVELOPMENT BOARD ENCLOSURES

CUSTOM SIZED ENCLOSURES

CUSTOM SERVICES

DIN RAIL BOXES

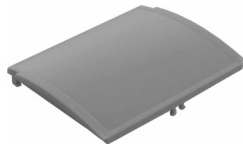
Standard Covers



CNMB/IP

RED TRANSPARENT	SMOKED TRANSPARENT	CLEAR TRANSPARENT	GREY	SIZE
CNMB/1/IPR	CNMB/1/IPS	CNMB/1/IPC	CNMB/1/PG	1
CNMB/2/IPR	CNMB/2/IPS	CNMB/2/IPC	CNMB/2/PG	2
CNMB/3/IPR	CNMB/3/IPS	CNMB/3/IPC	CNMB/3/PG	3
CNMB/4/IPR	CNMB/4/IPS	CNMB/4/IPC	CNMB/4/PG	4
CNMB/5/IPR	CNMB/5/IPS	CNMB/5/IPC	CNMB/5/PG	5
CNMB/6/IPR	CNMB/6/IPS	CNMB/6/IPC	CNMB/6/PG	6
CNMB/9/IPR	CNMB/9/IPS	CNMB/9/IPC	CNMB/9/PG	9
CNMB/12/IPR	CNMB/12/IPS	CNMB/12/IPC	CNMB/12/PG	12

Curved Covers



CNMB/PC

RED TRANSPARENT	SMOKED TRANSPARENT	CLEAR TRANSPARENT	GREY	SIZE
CNMB/1/PRC	CNMB/1/PSC	CNMB/1/PCC	CNMB/1/PGC	1
CNMB/2/PRC	CNMB/2/PSC	CNMB/2/PCC	CNMB/2/PGC	2
CNMB/3/PRC	CNMB/3/PSC	CNMB/3/PCC	CNMB/3/PGC	3
CNMB/4/PRC	CNMB/4/PSC	CNMB/4/PCC	CNMB/4/PGC	4
CNMB/5/PRC	CNMB/5/PSC	CNMB/5/PCC	CNMB/5/PGC	5
CNMB/6/PRC	CNMB/6/PSC	CNMB/6/PCC	CNMB/6/PGC	6
CNMB/9/PRC	CNMB/9/PSC	CNMB/9/PCC	CNMB/9/PGC	9

Curved Hinged Covers

- For use with extended module only

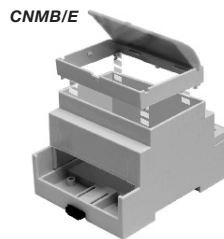


CNMB/HPC

RED TRANSPARENT	CLEAR TRANSPARENT	GREY	SIZE
CNMB/2/HPRC	CNMB/2/HPCC	CNMB/2/HPGC	2
CNMB/3/HPRC	CNMB/3/HPCC	CNMB/3/HPGC	3
CNMB/4/HPRC	CNMB/4/HPCC	CNMB/4/HPGC	4
CNMB/5/HPRC	CNMB/5/HPCC	CNMB/5/HPGC	5
CNMB/6/HPRC	CNMB/6/HPCC	CNMB/6/HPGC	6
CNMB/9/HPRC	CNMB/9/HPCC	CNMB/9/HPGC	9

Extended Height Module

- 16mm high
- Accepts hinged, curved lid
- Adds an additional horizontal PCB slot



CNMB/E

TYPE NO.	WIDTH	SIZE
CNMB/2/E	34.7mm	2
CNMB/3/E	52.0mm	3
CNMB/4/E	70.0mm	4
CNMB/5/E	86.5mm	5
CNMB/6/E	104.5mm	6
CNMB/9/E	157.7mm	9

Kits

- Each kit contains one grey panel cover and a selection of solid and perforated terminal guards.
- Kits of the most frequently used components are available to order.



CNMB/ST/KIT

KIT	KIT PART NO.	COVER /PG	TERMINAL /TG508P	GUARD /TGS	EXTENSION
					MODULE /E
STANDARD	CNMB/1/KIT	1	2	1	-
	CNMB/2/KIT	1	2	1	-
	CNMB/3/KIT	1	2	1	-
	CNMB/4/KIT	1	2	1	-
	CNMB/5/KIT	1	2	1	-
	CNMB/6/KIT	1	4*	2*	-
	CNMB/9/KIT	1	6*	3*	-
EXTENDED HEIGHT	CNMB/12/KIT	1	8*	4*	-
	/HPCC				
	CNMB/1E/KIT	1	2	1	1
	CNMB/2E/KIT	1	2	1	1
	CNMB/3E/KIT	1	2	1	1
	CNMB/4E/KIT	1	2	1	1
	CNMB/5E/KIT	1	2	1	1
CNMB/6E/KIT	1	4*	2*	1	
CNMB/9E/KIT	1	6*	3*	1	
CNMB/12E/KIT	1	8*	4*	1	

* For size 6, 9 and 12, multiple 'size 3' terminal guards are supplied. For example size 6 requires 2 x 'size 3' guards per side. Kits are also available for vented, solid top and extended wall bodies e.g. CNMB/2ST/KIT Where a box has only one open side (e.g. CNMB/5/1) no solid terminal guards are supplied.