



# CORCOM FILTER - 20 SRB

Corcom SRB Series Power Inlet filter

The Corcom SRB filter series has been extended to incorporate the IEC60320/C20 receptacle for cord connected applications up to 20Amps. The new products are UL & CSA approved at 20 Amps and VDE approved at 16 Amps. The SRB series is specifically designed to attenuate conducted EMI above 10MHz and reduce radiated EMI from emitting through a typical AC receptacle. EMI shielding is provided around the receptacle to reduce the aperture created from the mounting cut-out in the panel. An available selection of EMI filters are designed to further address system radiated EMC problems by providing attenuation in the 10MHz to 300MHz range.

## Key Benefits

- Minimum Depth 20A IEC Inlet
- Filtered versions with 3 different attenuation levels
- Unfiltered versions available
- Flange mount or Snap-In
- Spade terminals or wire lead termination

## Applications

- Instrumentation & measurement equipment
- Home appliances
- Computing & Accessories
- Consumer electronics
- TV / Audio / Video equipment
- Medical equipment

## Electrical

- **Rated current:** 20A
- **Rated voltage (max):** 250VAC
- **Operating frequency:** 50/60Hz
- **Capacitor values:** omit = none  
W 0.47yF  
X 1.0 yF  
Y 2.2 yF

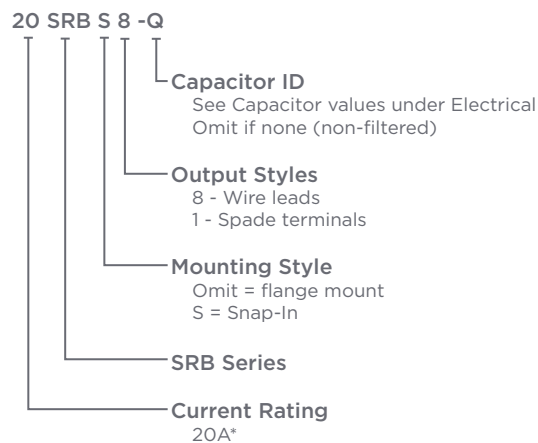
## Mechanical

- Light weight
- Minimum size
- 2 different mounting & termination styles

## Standards

- UL Recognized
- CSA Certified
- VDE Approved (at 16A current rating)

## Ordering Information



\* 20A versions are tested by Underwriters Laboratories to US and Canadian requirements and are VDE approved at 16A, 250VAC

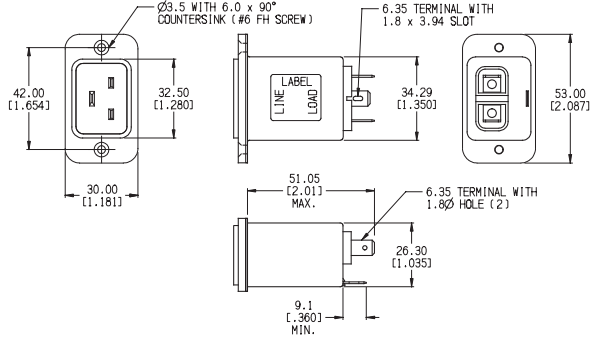
## Product Selection Information

Part Number	Description	Part Number	Description
5-1609152-1	20SRB1	5-1609152-9	20SRBS1
5-1609152-2	20SRB1-X	6-1609152-0	20SRBS1-X
5-1609152-3	20SRB1-Y	6-1609152-1	20SRBS1-W
5-1609152-4	20SRB1-W	6-1609152-2	20SRBS1-Y
5-1609152-5	20SRB8	6-1609152-3	20SRBS8
5-1609152-6	20SRB8-X	6-1609152-4	20SRBS8-X
5-1609152-7	20SRB8-W	6-1609152-5	20SRBS8-W
5-1609152-8	20SRB8-Y	6-1609152-6	20SRBS8-Y

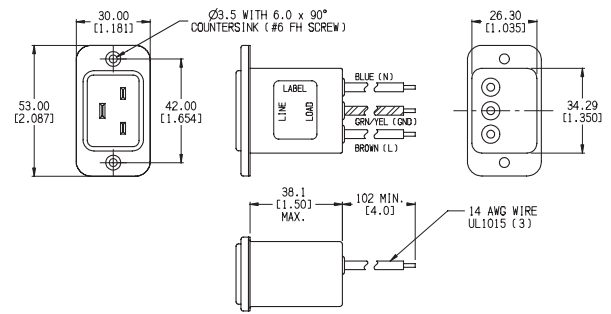
# CORCOM Filter - 20 SRB

## Case Styles

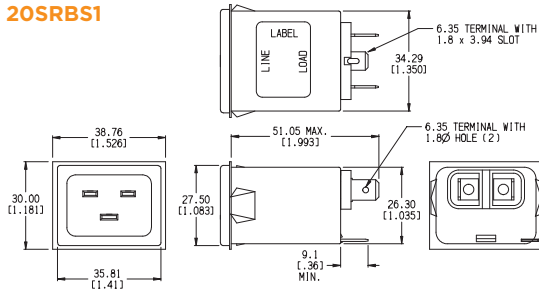
### 20SRB1



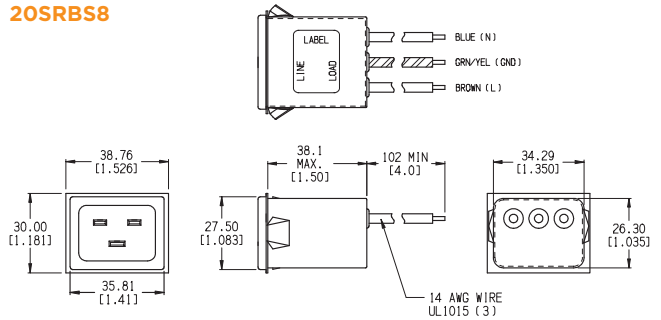
### 20SRB8



### 20SRBS1

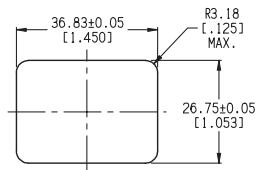


### 20SRBS8



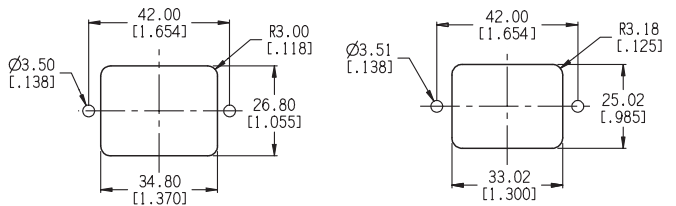
## Recommended panel cutouts

### 20SRB1



PANEL CUTOUT (FRONT MOUNT)  
PANEL THICKNESS: 0.78 - 1.19 REF.  
CONTACT ENGINEERING FOR OTHER PANEL THICKNESSES.

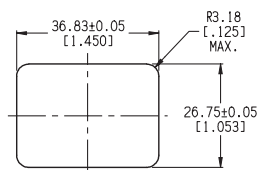
### 20SRB8



PANEL CUTOUT FRONT MOUNT  
TOLERANCE: ±0.13 (±0.005)

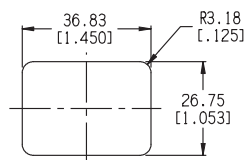
PANEL CUTOUT REAR MOUNT  
TOLERANCE: ±0.13 (±0.005)

### 20SRBS1



PANEL CUTOUT (FRONT MOUNT)  
PANEL THICKNESS: 0.78 - 1.19 REF.  
CONTACT ENGINEERING FOR OTHER PANEL THICKNESSES.

### 20SRBS8



PANEL CUTOUT (FRONT MOUNT)  
TOLERANCE: ±0.05 (±0.002)  
PANEL THICKNESS: 0.79-1.19 REF.  
(0.031-0.047)

## Performance data

Common Mode / Asymmetrical (Line to Ground) Minimum Insertion Loss - Measured in closed 50 Ohm system

Capacitor ID	Frequency - MHz					
	1	5	10	50	100	300
W		2	4	18	13	20
X		5	9	25	10	1
Y	1	10	15	20	8	22

## LET'S CONNECT

We make it easy to connect with our experts and are ready to provide all the support you need. Just call your local support number or visit [www.te.com/industrial](http://www.te.com/industrial) to chat with a Product Information Specialist.

## Technical Support

[te.com/support-center](http://te.com/support-center)

### FOR MORE INFORMATION

#### TE Technical Support Center

Internet:	<a href="http://te.com/help">te.com/help</a>
USA:	+1 (800) 522-6752
Canada:	+1 (905) 475-6222
Mexico:	+52 (0) 55-1106-0800
Latin/S. America:	+54 (0) 11-4733-2200
Germany:	+49 (0) 6251-133-1999
UK:	+44 (0) 800-267666
France:	+33 (0) 1-3420-8686
Netherlands:	+31 (0) 73-6246-999
China:	+86 (0) 400-820-6015

Part numbers in this brochure are RoHS Compliant\*, unless marked otherwise.

\*as defined [www.te.com/leadfree](http://www.te.com/leadfree)

## te.com

Corcom, TE, TE Connectivity, TE connectivity (logo) and Every Connection Counts are trademarks. All other logos, products and/or company names referred to herein might be trademarks of their respective owners.

The information given herein, including drawings, illustrations and schematics which are intended for illustration purposes only, is believed to be reliable. However, TE Connectivity makes no warranties as to its accuracy or completeness and disclaims any liability in connection with its use. TE Connectivity's obligations shall only be as set forth in TE Connectivity's Standard Terms and Conditions of Sale for this product and in no case will TE Connectivity be liable for any incidental, indirect or consequential damages arising out of the sale, resale, use or misuse of the product. Users of TE Connectivity products should make their own evaluation to determine the suitability of each such product for the specific application.

© 2016 TE Connectivity Ltd. family of companies All Rights Reserved.

4-1773450-8 JN 01/16