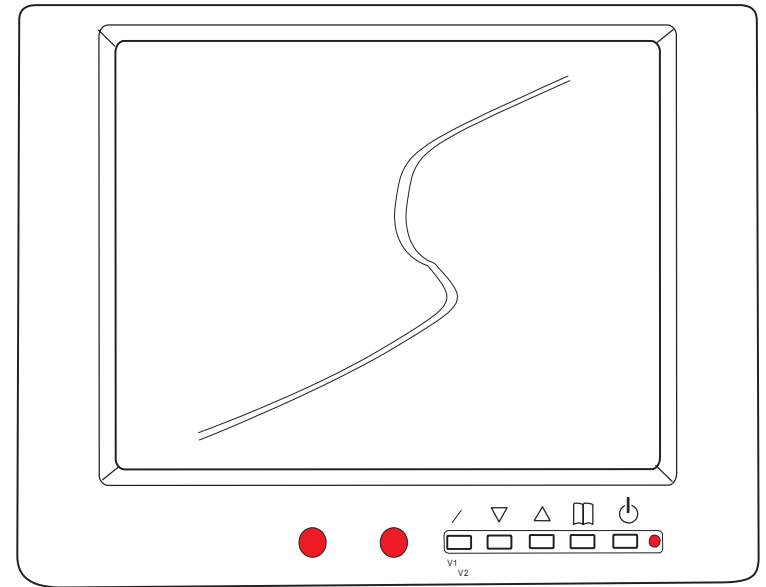


COLOR TFT LCD MONITOR

OPERATING INSTRUCTION Model No. AN5601B



e13 03 11035



Before operating this unit, please read these instructions completely

SAFETY PRECAUTIONS



(Improper handling by ignoring the following may result in serious injury or death)

- ⦿ Do not watch TV/Video programs and operate the monitor while driving; it may cause an accident.
- ⦿ Do not install the monitor where it can be seen by the driver or obstruct any Air Bag device or HOT Air Vent.
- ⦿ Do not attempt to service this product by yourself. If the unit is not functioning correctly, first read this instruction book. If afterwards you still think it is not working correctly then disconnect the power to the unit and contact your local dealer.
- ⦿ Dropping the unit may cause internal mechanical and electrical failure, which is not covered by the warranty.
- ⦿ Do not open the monitor cabinet, (As this will invalidate the Warranty) there are no user serviceable parts inside.
- ⦿ In the unlikelihood of the In-Line fuse blowing ensure you replace it with the same amperage.
- ⦿ The monitor should be situated away from direct sun light, heat, water or moisture.
- ⦿ To clean the monitor use a soft cloth, do not use solvents of any kind as this will damage the unit.

Specifications

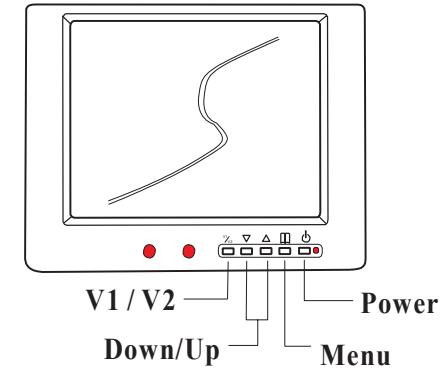
Display:	5.6" active matrix TFT-LCD (4:3).
Back Light:	LED back light.
Dot Format:	960 (H) x 234 (V) 112320 Pixels.
Dot Pitch:	0.118mm(W) x 0.362mm (H).
Brightness (typ.):	330 cd /m ² .
Contrast Ratio:	300 : 1.
View Angle (CR>10)	65/65/45/65 degrees (L/R/U/D).
Pixel Configuration:	R.G.B. Stripe.
Response Time:	25 ms.
Power Requirements:	9 ~ 36 VDC - 12V 340 mA. 2.1mm Centre Positive.
Inputs:	2 x Audio/Video RCA Sockets.
Video Signal:	1Vp-p (positive) 75 ohms.
Video System:	NTSC/PAL Auto Detection.
Audio Signal:	0.5~1.4Vp-p@1KHz.
Weight:	0.33 Kgms.
Dimensions:	148 x 114 x 30 (WxHxD)mm.
with Sun Visor:	157 x 70 (WxD)mm.
Operating Temperature:	-20 ~ 85 Deg.

Features

- OSD (on screen display) for Volume, Brightness, Contrast, Saturation, Hue, Power on Speed, Auto Brightness (optional), Mirror Function. (Left/Right/Up/Down), Default.
- NTSC/PAL Auto Detection.
- Audio via Speaker.
- 8 pin Mini Din plug for easy connection.
- DC 9 ~ 36VDC Voltage input.
- DC 12V Output power for camera (Optional).
- Auto brightness adjustment function (Optional)
- Audio/Video inputs x 2.
- Auto switch from AV1 input to AV2 input for Vehicle Reversing function.
- Auto power on when Reverse Gear Signal is detected.

*Design and specifications are subject to change without notice E&EO. PRINTED IN TAIWAN

Mainframe

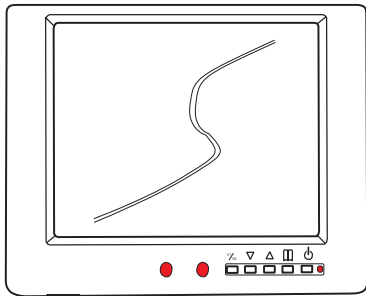


Functions

When the monitor has been installed and connected.

1. Press the "POWER" key to turn on the monitor. When the power is connected to the monitor it will Auto start and go to AV1, if there is no signal it will transfer its search to AV2, if there is no signal there, then it will go into standby mode. If the Power button is pressed it will resume its search above. When in standby mode if a signal is applied to either AV1 or AV2 then it will exit standby mode and show the image.
2. Press "MENU" key to select the adjustment item. The sequence of adjustment item is shown as following,
 1. Volume.
 2. Brightness.
 3. Contrast.
 4. Saturation.
 5. Hue.
 6. Mirror Function. Left/Right/Up/Down.
 7. Power On Speed. Normal/Fast.
 8. Auto Brightness. Optional.
 9. Default. Reset to Factory settings.
3. You can use " Up/Down" key to adjust the value.
4. Press " V1/V2" key to change the video source from AV1 to AV2.
5. When the unit is showing an image when pressing the Up/Down Keys will operate the "Mute" function.

Cable Installation Diagram



8 pin mini din (male)
-Connect to

1. Extension cable
2. RV-40 quad view box, or
3. RCA adaptor cable

RCA adaptor cable

- Power Input: DC 9 ~ 36V
(DC Jack: 2.1mm-Centre Positive)
- Video 1 Input
(RCA Jack -yellow wire, yellow RCA)
- Audio 1 Input
(RCA Jack-green wire, white RCA)
- Video 2 Input
(RCA Jack-blue wire, Yellow RCA)
- Audio 2 Input
(RCA Jack-black wire, white RCA)
- Reverse Trigger
For Vehicle reversing function only
(Orange wire, DC9V~36V)

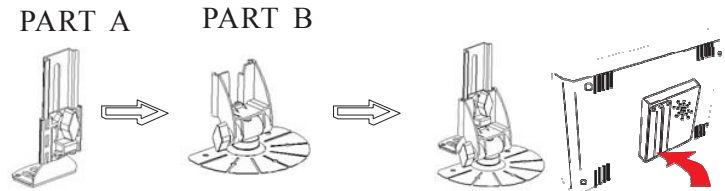
Monitor Stand and Visor Installation Diagram

Stand installation:

To assemble the stand:

Before assembling loosen the large knob on Part "B" first. This will enable it to swivel easily.

STEP 1: Slide the "A" part into the slide track of "B" part, it will click into place and lock. As shown in the diagram.



STEP 2: Position the stand in the ideal location using the sticky pad (under the stand fan base) or by suitable screws. Note: Ensure if using screws that they are not too long to penetrate vital wires etc below it.



STEP 3: Loosen the large knob on Part "A" and push outwards. Then slide the silver flat nut into the rear of the monitor housing, so that the monitor now sits on the rubber pad. Then tighten the knob, thus locking the monitor in place.

Finally adjust the viewing angle of the monitor on the stand, then tighten the knob on Part "B" to lock in place.

Visor installation:

When the monitor is in position gently pull the visor apart and fit to each side of the monitor in the slots provided and press in. Note: There will be a small gap between the visor and monitor. So do not try to push in too hard or damage may occur which will not be covered by the warranty.

