

Flush-type socket - SACC-DSIV-FS-8CON-L180-10G SCO - 1440669

Please be informed that the data shown in this PDF Document is generated from our Online Catalog. Please find the complete data in the user's documentation. Our General Terms of Use for Downloads are valid (<http://phoenixcontact.com/download>)




Flush-type socket, CAT6_A, Ethernet, 8-pos., M12 SPEEDCON, rear/screw mounting with M12 fastening thread, with straight solder connection

M12 panel feed-through, rear mounting



Key Commercial Data

Packing unit	20 STK
Minimum order quantity	20 STK
GTIN	 4 046356 504591
Weight per Piece (excluding packing)	10.53 g
Custom tariff number	85366990
Country of origin	Germany

Technical data

Ambient conditions

Ambient temperature (operation)	-40 °C ... 85 °C
Degree of protection	IP67 (When plugged in)

General

Rated current at 40°C	0.5 A
Rated voltage	50 V AC
	60 V DC
Rated surge voltage	1.5 kV
Number of positions	8
Insulation resistance	> 100 MΩ
Signal type/category	Ethernet CAT6 _A
Overvoltage category	III

Flush-type socket - SACC-DSIV-FS-8CON-L180-10G SCO - 1440669

Technical data

General

Degree of pollution	3
Connection method	THR solder connection
Insertion/withdrawal cycles	≥ 100

Material

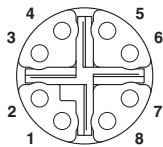
Flammability rating according to UL 94	V0
Contact material	CuZn
Contact surface material	Ni/Au
Contact carrier material	PPA
Material of grip body	Zinc die-cast, nickel-plated
Material, knurls	Zinc die-cast, nickel-plated
Material	Zinc die-cast (nickel-plated)
Sealing material	EPDM

Standards and Regulations

Flammability rating according to UL 94	V0
--	----

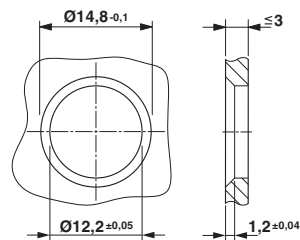
Drawings

Schematic diagram



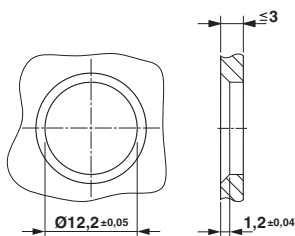
M12 socket pin assignment, 8-pos, view of socket side

Dimensional drawing



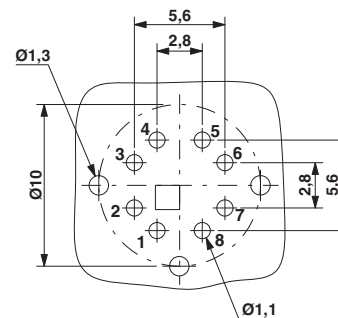
Housing cut-out for two-part M12 flush-type connectors with THR and wave soldering connection, version 1

Dimensional drawing



Housing cut-out for two-part M12 flush-type connectors with THR and wave soldering connection, version 2

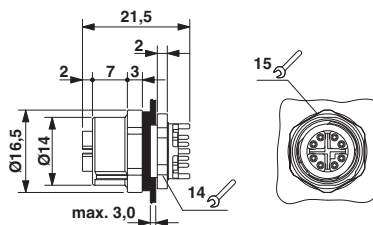
Drilling diagram



Soldering pad geometry

Flush-type socket - SACC-DSIV-FS-8CON-L180-10G SCO - 1440669

Dimensional drawing



M12 flush-type socket

Classifications

eCl@ss

eCl@ss 4.0	27140815
eCl@ss 4.1	27140815
eCl@ss 5.0	27143423
eCl@ss 5.1	27143423
eCl@ss 6.0	27279220
eCl@ss 7.0	27440103
eCl@ss 8.0	27440103
eCl@ss 9.0	27440102

ETIM

ETIM 2.0	EC001297
ETIM 3.0	EC002061
ETIM 4.0	EC002061
ETIM 5.0	EC002061

UNSPSC

UNSPSC 6.01	31251501
UNSPSC 7.0901	31251501
UNSPSC 11	31251501
UNSPSC 12.01	31251501
UNSPSC 13.2	39121413

Approvals

Approvals

Approvals

UL Recognized / cUL Recognized / EAC / EAC / EAC / cULus Recognized


Ex Approvals


Flush-type socket - SACC-DSIV-FS-8CON-L180-10G SCO - 1440669

Approvals

Approvals submitted

Approval details

UL Recognized 	
Nominal current I _N	0.5 A
Nominal voltage U _N	60 V

cUL Recognized 	
Nominal current I _N	0.5 A
Nominal voltage U _N	60 V

EAC

EAC

EAC

cULus Recognized 	
--	--