

3M™

Fibre Optic Couplings, Type ST and FC



FC and ST Single-mode and Multimode Couplings
Simplex

3M offers a wide range of RoHS compliant ST and FC couplings for all applications in Premise and FTTX networks.

All couplings comply with the corresponding Standards IEC 61754-2 (ST), IEC 61754-13 (FC) and IEC 60874-10 (ST) for single-mode and multimode technology.

Single-mode couplings are equipped with Zirconia ceramic split sleeves to ensure best alignment and high performance also under temperature extremes and rough handling conditions.

The multimode couplings are equipped with PhBr metal sleeves.

The die cast or machined ST and FC housings provide consistent long term optical and mechanical performance.

All couplings have D-shape threads and are delivered with washer and central nut.

Features

- Single-mode with Zirconia sleeves
- Pre-assembled with washer and nut
- D-hole mounting for both ST and FC
- Nickel plated zinc die-cast or machined

Benefits

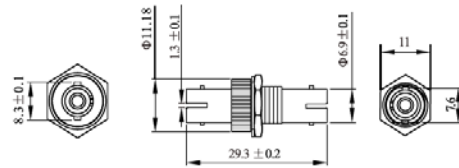
- Low insertion loss, perfect alignment
- Easy and quick installation
- Secured mounting in front plates
- Excellent corrosion protection

Specifications

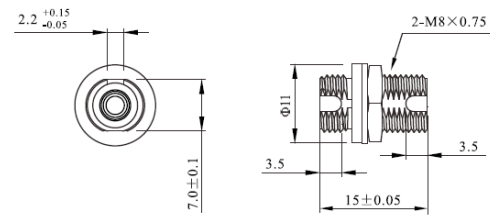
Parameters for all SM and MM Couplings

Insertion Loss	≤0,2dB
Mating Durability	≤0,2dB increase after ≤ 500 matings
Pullout Force	200-600 N
Operating Temperature	-40°C to +85°C
Alignment sleeve material, multimode OM1/OM2	PhBr
Alignment sleeve material, single-mode	Zirconia ceramic

- ST Simplex Coupling, MM, threaded with nut and washer 6112
- ST Simplex Coupling, MM, threaded with nut and washer 6112-1K
- ST Simplex Coupling, SM, threaded with nut and washer 8119-E

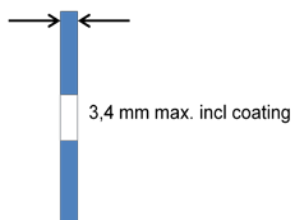


- FC/PC Simplex Coupling, SM, threaded w/ nut and washer 8211-E
- FC/APC Simplex Coupling, SM, threaded w/ nut and washer 8211-APC-E

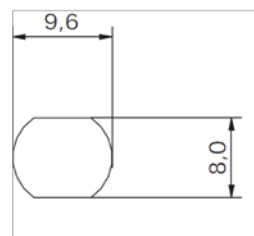


FC D4 Coupling

Sheet thickness



Hole pattern ST/FC



All dimensions in mm

Ordering Information

Ref. No. MOQ



ST-Simplex Coupling, MM, threaded with nut and washer
ST-Simplex Coupling, MM, threaded with nut and washer
ST-Simplex Coupling, SM, threaded with nut and washer

6112 60 each
6112-1K 1000 each
8119-E 60 each



FC/PC Simplex Coupling, SM, threaded w/ nut and washer (D4)
FC/APC Simplex Coupling, SM, threaded w/ nut and washer (D4)

8211-E 60 each
8211-APC-E 60 each

Important Notice

The details contained in this literature have been carefully prepared from information available to 3M at the time of its production. However, it is not intended to be relied upon for purposes of product specification and you should contact your sales representative if specification details are required. Because of the wide variety of processes and conditions in which these products may be used, the user should first carry out tests to determine the suitability of the products for the particular use intended. All questions of warranty and liability relating to 3M products are governed by the selling 3M subsidiary's Terms of Sale subject where applicable to the prevailing law.
3M is trademark of the 3M company. SID is a trademark of Quante AG.



Europe, Middle East & Africa
c/o 3M Deutschland GmbH
Carl-Schurz-Straße 1
41453 Neuss - Germany
Tel.: ++49 (0)2131 / 14-5999
Fax: ++49 (0)2131 / 14-5998
Internet: www.3MTelecommunications.com/eu

Rights reserved to make technical alternations.
Dr.Nr. 07-401-30300 Index 0 Revision 03.2013