

PRODUCT ANNOUNCEMENT

September 28, 2016

Announcing two new 640x480 thermal imaging cameras NEW – TiX580 and Ti480 Infrared Cameras

Stunning infrared image quality and surprising affordability

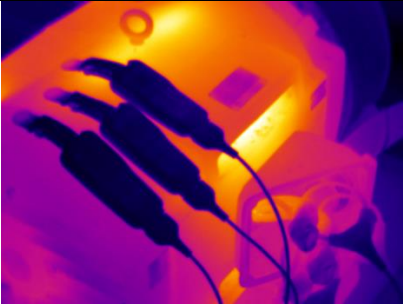


Help your customers bring their best to work.

Fluke is proud to introduce two new rugged and superbly engineered 640 x 480 thermal imaging cameras – four times the resolution power of previous cameras in these categories. Building on 65 years of manufacturing the world’s top measurement tools, these cameras offer stunning image quality at surprising affordability. Users can now perform thermal imaging inspections with more confidence and faster results - all with the ruggedness and ease of use expected from Fluke.

These cameras are not only Fluke Connect® compatible but also include the new, powerful and easy-to-use Fluke Connect desktop software to optimize and analyze infrared images, and generate quick, customizable reports.

Why should your customers work with anything less?

Features and benefits:

	<p>Stunning Image Quality – Ti480 and TiX580</p> <ul style="list-style-type: none"> • Stunning 640x480 image quality at surprising affordability • Enhanced image quality and temperature measurement accuracy – turn 640 x 480 images into 1280 x 960 images. That’s 4x the resolution and pixels with SuperResolution. • Optional 2x and 4x telephoto, wide angle and 25 micron macro smart lenses
<p style="text-align: center;">TiX580</p>  <p>Why work with anything less? With up to 640x240 resolution, a large 5.7 in touchscreen and a 240 ° rotating lens, the answer is right before your eyes, even when your target isn’t. The large LCD touchscreen allows you to:</p> <ul style="list-style-type: none"> • Navigate and capture images faster with the industries only 5.7 inch touchscreen LCD with on-camera analytics for in-field image analysis.¹ • 150 % more viewing area than a standard 3.5-inch screen <p><small>¹ Compared to industrial handheld thermal imagers with 320x240 detector resolution as of September 1, 2015.</small></p>	<p style="text-align: center;">Ti480</p>  <p>Bring your best to work to meet the rigorous demands of thermal inspections and perform critical inspections with more confidence and quicker results.</p> <ul style="list-style-type: none"> • One-handed, easy-to-use user interface for quick, point and shoot troubleshooting • Ruggedized capacitive high-resolution 640X480 touch screen for quick menu navigation



Flexible and Ergonomic Form Factor – TiX580

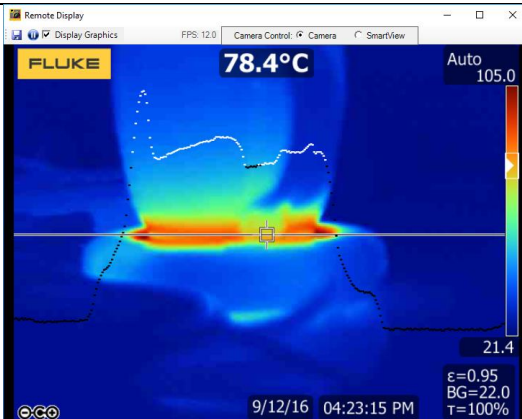
- Easily navigate over, under and around objects with full 240° rotating lens and see the image before you capture it
- Outside, the rotating screen lets you make adjustments to minimize glare, and the large 5.7 inch LCD touchscreen delivers a premium in-field viewing experience



Innovative Focus Options – Ti480 and TiX580

- Capture a clear, accurate image focused throughout the field of view with MultiSharp™ Focus. Simply point and shoot—the camera automatically processes a stack of images focused near and far (TiX580 and Ti480)
- Instantly get an in-focus image with pinpoint¹ accuracy of your target with Fluke’s exclusive LaserSharp® Auto Focus technology
- Quickly and accurately determine the distance to your target with a built-in professional grade laser distance meter¹

¹Up to 30 meters (100 feet).



Key features for R&D users

Infrared imagery and data import capabilities to MATLAB® and LabVIEW® software platforms

- Static infrared images and their data
- Streaming infrared data and its data
- Live line marker – temperature readings graphed along a horizontal line in image (image at left)



Powerful, new, easy-to-use Fluke Connect® desktop software

Included with purchase is this comprehensive and connected software platform that represents the future of integrated equipment maintenance, monitoring, analysis and reporting. It’s easier than ever to optimize thermal images, perform analytics, generate quick, customizable, robust reports and export images to the format of your choice in the cloud. And you will be able to integrate with Fluke Connect — the largest system of software and wireless tools in the world.

Fluke Connect desktop software features:

- Compatibility with all Fluke infrared cameras
- Modern visual design



- Intuitive navigation — easier to learn, easier and faster to work in
- Simplified work flows
- Simplified reporting workflow and better report templates
- Batch thermal image editing
- Real time data collection with LabVIEW® and MATLAB® tool boxes for R&D applications
- Fluke Connect Cloud storage



- Optional lenses to maximize your infrared camera's performance.
- Pre-calibrated optional lenses: 2x and 4x telephoto and 25 micron/macro, let you capture images close up or from a distance

Customer applications:

Industrial Maintenance



**Process applications:
EG: Oil & Gas and Chemical Processing**



Research & Development



Utilities



Included with product:

TiX580



Ti480



- Thermal imager with standard infrared lens
- AC power supply
- Battery Pack charger (universal adapter)
- Two rugged lithium ion smart battery packs
- USB cable
- HDMI video cable
- 4 GB micro SD card, Ti480 only
- Rugged, hard carrying case
- Soft transit bag, Ti480 only
- Adjustable neck and hand strap, TiX580 only
- Adjustable hand strap, Ti480 only
- Bluetooth headset, TiX580 only (where available)
- Warranty registration card
- Calibration certificate
- Available by free download: Fluke Connect® desktop software and user's manual

Basic Product Specifications:

Expert Series – TiX580, TiX560, TiX520 and TiX500

	TiX580	TiX560	TiX520	TiX500
Key Features				
Detector resolution	640 x 480 (307,200 pixels)		320 x 240 (76,800 pixels)	
SuperResolution	Yes, on camera and in software. Captures and combines 4x the data to create a 1280 x 960 image		Yes, on camera and in software. Captures and combines 4x the data to create a 640 x 480 image	
IPOV with standard lens (spatial resolution)	0.93 mRad, D:S 1068:1		1.31 mRad, D:S 753:1	
Field of view	34 °H x 24 °V		24 °H x 17 °V	
Minimum focus distance	15 cm (approx. 6 in)			
IPOV with optional 2x telephoto smart lens	0.46 mRad, D:S is 2145:1		0.65 mRad, D:S 1529:1	
Field of view	17 °H x 12 °V		12 °H x 9 °V	
Minimum focus distance	45 cm (approx. 18 in)			
IR-Fusion blending	Picture-in-picture and full screen			
IPOV with optional 4x telephoto smart lens	0.23 mRad, D:S is 4300:1		0.33 mRad, D:S 2941:1	
Field of view	8.5 °H x 6 °V		6.0 °H x 4.5 °V	
Minimum focus distance	1.5 m (approx. 5 ft)			
IR-Fusion blending	Picture-in-picture and full screen			
IPOV with optional wide-angle smart lens	1.85 mRad, D:S is 525:1		2.62 mRad, D:S 377:1	
Field of view	68 °H x 48 °V		46 °H x 34 °V	
Minimum focus distance	15 cm (approx. 6 in)			
IR-Fusion blending	Full screen			
Optional macro smart lens	Minimum spot size: 25 microns			
Field of view	50.5 °H x 38 °V		36.1 °V x 27.1 °V	
Working distance	~8 mm (0.3 in) to ~14 mm (0.6 in) with optimal at 10 mm (0.4 in)			
MultiSharp™ Focus	Yes, focused near and far, throughout the field of view			
LaserSharp® Auto Focus	Yes, for consistently in-focus images. Every. Single. Time.			
Laser distance meter	Yes, calculates distance to the target for precisely focused images and displays distance on screen			
Advanced manual focus	Yes			
Wireless connectivity	Yes, to PC, iPhone® and iPad® (iOS 4s and later), Android™ 4.3 and up, and WiFi to LAN (where available)			
Fluke Connect® app compatible	Yes*, connect your camera to your smartphone, and images taken automatically upload to the Fluke Connect app for saving and sharing			
Fluke Connect Assets optional software	Yes*, assign images to assets and create work orders. Easily compare measurement types in one location			
Fluke Connect Instant Upload	Yes*, connect your camera to your building's WiFi network, and images taken automatically upload to the Fluke Connect system for viewing on your smartphone or PC			
Fluke Connect tool compatible	Yes*, connects wirelessly to select Fluke Connect enabled tools and displays measurements on camera screen			
IR-Fusion® technology	Yes, adds the context of the visible details to your infrared image			
AutoBlend™ mode	Continuously variable		100 %, 75 %, 50 %, 25 % IR plus full visible on camera	
Picture-In-Picture (PIP)	100 %, 75 %, 50 %, 25 % IR			
Continuous AutoBlend™	Set AutoBlend™ level across continuum			
Touchscreen display (capacitive)	5.7 inch (14.4 cm) landscape 640 x 480 LCD			
Rugged, ergonomic design	240 ° rotatable (articulating) lens			
Thermal sensitivity (NETD)**	≤ 0.05 °C at 30 °C target temp (50 mK)	≤ 0.03 °C at 30 °C target temp (30 mK)	≤ 0.04 °C at 30 °C target temp (40 mK)	≤ 0.05 °C at 30 °C target temp (50 mK)
Level and span	Smooth auto and manual scaling			
Touchscreen adjustable level/span	Yes. Span and level can be easily and quickly set by simply touching the screen			
Fast auto toggle between manual and auto modes	Yes			
Fast auto-rescale in manual mode	Yes			
Minimum span (in manual mode)	2.0 °C (3.6 °F)			
Minimum span (in auto mode)	3.0 °C (5.4 °F)			
Built-in digital camera (visible light)	5MP			
Frame rate	60 Hz or 9 Hz versions			
Laser pointer	Yes			
LED light (torch)	Yes			
Digital Zoom	2x, 4x, 8x		2x, 4x	
Data storage and image capture				
Extensive memory options	Removable 4 GB micro SD memory card, 4 GB internal flash memory, save to USB flash drive capability, upload to Fluke Cloud for permanent storage.			
Post-capture image editing (on camera)	Yes, edit and analyze captured images on camera			

PRODUCT ANNOUNCEMENT: Fluke TiX580, Ti480 Infrared Cameras, Fluke Connect desktop software and R&D software platform integration
Infrared images are for illustration purposes and may not have been taken with the models shown.

Professional Series - Ti480, Ti450, Ti400 and Ti300

	Ti480	Ti450	Ti400	Ti300
Key features				
Detector resolution	640 x 480 (307,200) or 1280 x 960 with SuperResolution	320 x 240 (76,800 pixels) or 640 x 480 with SuperResolution	320 x 240 (76,800 pixels)	240 x 180 (43,200 pixels)
SuperResolution	Yes, on camera and in software. Captures and combines 4x the data to create a 1280 x 960 image	Yes, on camera and in software. Captures and combines 4x the data to create a 640 x 480 image		—
IFOV with standard lens (spatial resolution)	0.93 mRad, D:S 1065:1		1.31 mRad, D:S 753:1	1.75 mRad, D:S 565:1
Field of view	34 °H x 24 °V		24 °H x 17 °V	
Minimum focus distance			15 cm (approx. 6 in)	
IFOV with optional 2x telephoto smart lens	0.46 mRad, D:S is 2145:1		0.65 mRad, D:S 1529:1	0.87 mRad, D:S 1147:1
Field of view	17 °H x 12 °V		12 °H x 9 °V	
Minimum focus distance			45 cm (approx. 18 in)	
IR-Fusion* technology			Picture-in-picture and full screen	
IFOV with optional 4x telephoto smart lens	0.23 mRad, D:S is 4300:1		0.33 mRad, D:S 2941:1	0.44 mRad, D:S 2208:1
Field of view	8.5 °H x 6 °V		6.0 °H x 4.5 °V	
Minimum focus distance			1.5 m (approx. 5 ft)	
IR-Fusion* technology			Picture-in-picture and full screen	
IFOV with optional wide-angle smart lens	1.85 mRad, D:S is 525:1		2.62 mRad, D:S 377:1	3.49 mRad, D:S 283:1
Field of view	68 °H x 48 °V		46 °H x 34 °V	
Minimum focus distance			15 cm (approx. 6 in)	
IR-Fusion* technology			Full screen	
MultiSharp™ Focus	Yes, focused near and far, throughout the field of view			—
LaserSharp® Auto Focus		Yes, for consistently in-focus images. Every. Single. Time.		
Laser distance meter		Yes, calculates distance to the target for precisely focused images and displays distance on screen		
Advanced manual focus		Yes		
Wireless connectivity		Yes, to PC, iPhone® and iPad® (iOS 4s and later), Android™ 4.3 and up, and WiFi to LAN (where available)		
Fluke Connect® app compatible		Yes*, connect your camera to your smartphone, and images taken automatically upload to the Fluke Connect app for saving and sharing		
Fluke Connect® Assets optional software		Yes*, assign images to assets and create work orders. Easily compare measurement types in one location.		
Fluke Connect® Instant Upload		Yes*, connect your camera to your building's WiFi network, and images taken automatically upload to the Fluke Connect system for viewing on your smartphone or PC		
Fluke Connect® tool compatible		Yes*, connects wirelessly to select Fluke Connect enabled tools and displays measurements on camera screen.		
IR-Fusion* technology		Yes, adds the context of the visible details to your infrared image		
AutoBlend™ mode		Min, Mid, Max IR plus full visible on camera; continuously variable in software		
Picture-In-Picture (PIP)		Yes		
Ruggedized touchscreen display		3.5 inch (landscape) 640 x 480 LCD		
Rugged, ergonomic design for one-handed use		Yes		
Thermal sensitivity (NETD)**	≤ 0.05 °C at 30 °C target temp (50 mK)	≤ 0.03 °C at 30 °C target temp (30 mK)		≤ 0.05 °C at 30 °C target temp (50 mK)
Level and span		Smooth auto and manual scaling		
Fast auto toggle between manual and auto modes		Yes		
Fast auto-rescale in manual mode		Yes		
Minimum span (in manual mode)		2.0 °C (3.6 °F)		
Minimum span (in auto mode)		3.0 °C (5.4 °F)		
Built-in digital camera (visible light)		5MP		
Frame rate		60 Hz or 9 Hz versions		
Laser pointer		Yes		
LED light (torch)		Yes		
Digital zoom	2x and 4x			—
Data storage and image capture				
Extensive memory options	Removable 4 GB micro SD memory card, 4 GB internal flash memory, save to USB flash drive capability, upload to Fluke Cloud™ for permanent storage			
Image capture, review, save mechanism	One-handed image capture, review, and save capability			

Note: For detailed specifications for the TiX580 please see the Technical Data Sheet, literature #6004049h and #6002304k For the Ti480.

Introduction schedule:

- Open for Orders: **November 7, 2016**
- Public Embargo / www.fluke.com: **November 7, 2016**
- ATP: **4 weeks**

Service plan:

- Standard two year warranty
- Service will be provided at the Fluke Service Centers

Product pricing and ordering information:

Fluke model	Description	P/N	UPC codes	Product including packaging				Origin	US list price
				L (in)	W (in)	H (in)	Wt (lbs)		
FLK-TIX580 60HZ	Thermal Imager; 640x480; 60 HZ, SR	4842073	0 95969 83522 0	27.3 cm (10.8 in)	15.9 cm (6.3 in)	9.7 cm (3.8 in)	1.54 kg (3.4 lbs)	USA	\$16,995
FLK-TIX580 9HZ	Thermal Imager; 640x480; 9 HZ, SR	4841945	0 95969 83516 9	27.3 cm (10.8 in)	15.9 cm (6.3 in)	9.7 cm (3.8 in)	1.54 kg (3.4 lbs)	USA	\$16,995
FLK-TIX580 60HZ/CN	Thermal Imager; 640x480;60 HZ, SR, China	4841906	0 95969 83515 2	27.3 cm (10.8 in)	15.9 cm (6.3 in)	9.7 cm (3.8 in)	1.54 kg (3.4 lbs)	USA	\$16,995
FLK-TIX580 9HZ/CN	Thermal Imager; 640x480; 9 HZ, SR, China	4841803	0 95969 83514 5	27.3 cm (10.8 in)	15.9 cm (6.3 in)	9.7 cm (3.8 in)	1.54 kg (3.4 lbs)	USA	\$16,995
FLK-TIX580 60HZ/JP	Thermal Imager; 640x480; 60 HZ, SR, Japan	4842020	0 95969 83519 0	27.3 cm (10.8 in)	15.9 cm (6.3 in)	9.7 cm (3.8 in)	1.54 kg (3.4 lbs)	USA	\$16,995
FLK-TIX580 9HZ/JP	Thermal Imager; 640x480; 9 HZ, SR, Japan	4841992	0 95969 83518 3	27.3 cm (10.8 in)	15.9 cm (6.3 in)	9.7 cm (3.8 in)	1.54 kg (3.4 lbs)	USA	\$16,995
FLK-TIX580 9HZ/BR	Thermal Imager; 640x480; 9 HZ, SR, Brazil	4842035	0 95969 83520 6	27.3 cm (10.8 in)	15.9 cm (6.3 in)	9.7 cm (3.8 in)	1.54 kg (3.4 lbs)	USA	\$16,995
FLK-TIX580 9HZ/MX	Thermal Imager; 640x480; 9 HZ, SR, Mexico	4842064	0 95969 83514 5	27.3 cm (10.8 in)	15.9 cm (6.3 in)	9.7 cm (3.8 in)	1.54 kg (3.4 lbs)	USA	\$16,995
FLK-TIX580 9HZ/NFC	Thermal Imager; 640x480; 9 HZ, SR, NFC	4841961	0 95969 83517 6	27.3 cm (10.8 in)	15.9 cm (6.3 in)	9.7 cm (3.8 in)	1.54 kg (3.4 lbs)	USA	\$16,995
FLK-Ti480 60HZ	Thermal Imager; 640x480; 60 HZ, SR	4842086	0 95969 83523 7	39.4 cm (15.5 in)	21.6 cm (8.5 in)	27.9 cm (11.0 in)	4.1 kg (9 lbs)	USA	\$13,999
FLK-Ti480 9HZ	Thermal Imager; 640x480; 9 HZ, SR	4842105	0 95969 83525 1	39.4 cm (15.5 in)	21.6 cm (8.5 in)	27.9 cm (11.0 in)	4.1 kg (9 lbs)	USA	\$13,999
FLK-Ti480 60HZ/CN	Thermal Imager; 640x480;60 HZ, SR, China	4842099	0 95969 83524 4	39.4 cm (15.5 in)	21.6 cm (8.5 in)	27.9 cm (11.0 in)	4.1 kg (9 lbs)	USA	\$13,999
FLK-Ti480 60HZ/JP	Thermal Imager; 640x480; 60 HZ, SR, Japan	4842131	0 95969 83528 2	39.4 cm (15.5 in)	21.6 cm (8.5 in)	27.9 cm (11.0 in)	4.1 kg (9 lbs)	USA	\$13,999
FLK-Ti480 9HZ/JP	Thermal Imager; 640x480; 9 HZ, SR, Japan	4842122	0 95969 83527 5	39.4 cm (15.5 in)	21.6 cm (8.5 in)	27.9 cm (11.0 in)	4.1 kg (9 lbs)	USA	\$13,999
FLK-Ti480 9HZ/BR	Thermal Imager; 640x480; 9 HZ, SR, Brazil	4842146	0 95969 83529 9	39.4 cm (15.5 in)	21.6 cm (8.5 in)	27.9 cm (11.0 in)	4.1 kg (9 lbs)	USA	\$13,999
FLK-Ti480 9HZ/MX	Thermal Imager; 640x480; 9 HZ, SR, Mexico	4842154	0 95969 83530 5	39.4 cm (15.5 in)	21.6 cm (8.5 in)	27.9 cm (11.0 in)	4.1 kg (9 lbs)	USA	\$13,999
FLK-Ti480 9HZ/NFC	Thermal Imager; 640x480; 9 HZ, SR, NFC	4842110	0 95969 83526 8	39.4 cm (15.5 in)	21.6 cm (8.5 in)	27.9 cm (11.0 in)	4.1 kg (9 lbs)	USA	\$13,999

See detailed Distributor Load Sheet for complete list of products, details and specifications.

Optional lenses:

Fluke model	Description	P/N	UPC codes	Origin	US list price
FLK-LENS/25MAC2	Infrared 25 Micron Macro Lens	4607064	0 95969 78225 8	USA	\$4495.00
FLK-LENS/4XTELE2	Infrared Telephoto Lens (4X magnification)	4607058	0 95969 78224 1	USA	\$6295.00
FLK-LENS/TELE2	Infrared Telephoto Lens (2X magnification)	4335350	0 95969 66863 7	USA	\$1299.99

Optional accessories:

Fluke model	Description	P/N	UPC codes	Origin	US list price
FLK-TIX5x-Lens Cap	Infrared Lens Cover	4550697	0 95969 78072 8	USA	\$50.00
TI-CAR-CHARGER	Car Charger	3039779	0 95969 41756 3	USA	\$129.99
BOOK-ITP	Introduction to Thermography Principles Book	3413459	0 95969 68189 6	USA	\$29.99
FLK-TI-SBP4 (TiX580)	Additional Smart Battery	4597142	0 95969 78054 4	China	\$129.99
FLK-TI-SBC3B	Additional Smart Battery Charger	4354922	0 9596 967438 6	China	\$179.99
FLK-TI-SBP3 (Ti480)	Additional Smart Battery	4354922	0 9596 967438 6	China	\$179.99
FLK-TIX5xx-Neck	Neck strap	4574715	0 95969 78069 8	China	\$29.95
FLUKE-TIX5xx Hand	Hand strap	4574703	0 95969 78070 4	China	\$14.95
FLK-TI-Bluetooth	Bluetooth Headset	4603258	0 95969 78227 2	China	\$74.95
FLK-TIX5xx-HDMI	HDMI Cable	4615511	0 95969 78071 1	China	\$100.00
FLK-TI-VISOR3 (Ti480)	Sun Visor	4335377	0 95969 66865 1	China	\$74.95
FLK-TI-TRIPOD3 (Ti480)	Tripod Mounting Accessory	4335389	0 95969 66866 8	China	\$99.95

Marketing assets:

Get the information you need to market and sell these tools

Download digital files from the Fluke download site at www.fluke-launch.com starting on October XX, 2016. Files can be obtained from VSA, product launch folder and will be posted to the EU Partner Portal.

Literature code	Description	Translations
Phase 1 assets		
6004049H	Fluke TiX580, TiX560, TiX520, TiX500 Data Sheet	CS, DA, DE, ESES, ESLA, FI, FR, ID, IT, JA, KO, NL, NO, PL, PTPT, PTBR, RO, RU, SV, TH, TR, VN, ZHCN, ZHTW
6002304K	Fluke Ti480, Ti450, Ti400 and Ti300 Data Sheet	CS, DA, DE, ESES, ESLA, FI, FR, ID, IT, JA, KO, NL, NO, PL, PTPT, PTBR, RO, RU, SV, TH, TR, VN, ZHCN, ZHTW
6008453/6008455	Launch email, landing page targeting Industrial segment	CS, DA, DE, ESES, ESLA, FI, FR, ID, IT, JA, KO, NL, NO, PL, PTPT, PTBR, RO, RU, SV, TH, TR, VN, ZHCN, ZHTW
Literature code	Description	Translations
Phase 1 assets, cont.		
n/a	Catalog copy (on VSA and in product launch folder)	CS, DA, DE, ESES, ESLA, FI, FR, ID, IT, JA, KO, NL, NO, PL, PTPT, PTBR, RO, RU, SV, TH, TR, VN, ZHCN, ZHTW
2674264	Thermography brochure	CS, DA, DE, ESES, ESLA, FI, FR, ID, IT, JA, KO, NL, NO, PL, PTPT, PTBR, RO, RU, SV, TH, TR, VN, ZHCN, ZHTW
6003479	Sales Matrix – adding new models	CS, DA, DE, ESES, ESLA, FI, FR, ID, IT, JA, KO, NL, NO, PL, PTPT, PTBR, RO, RU, SV, TH, TR, VN, ZHCN, ZHTW
6008587A	Print ad	CS, DA, DE, ESES, ESLA, FI, FR, ID, IT, JA, KO, NL, NO, PL, PTPT, PTBR, RO, RU, SV, TH, TR, VN, ZHCN, ZHTW
6008452	External banner ads – standard Google and PPC sizes	CS, DA, DE, ESES, ESLA, FI, FR, ID, IT, JA, KO, NL, NO, PL, PTPT, PTBR, RO, RU, SV, TH, TR, VN, ZHCN, ZHTW
n/a	Press release	CS, DA, DE, ESES, ESLA, FI, FR, ID, IT, JA, KO, NL, NO, PL, PTPT, PTBR, RO, RU, SV, TH, TR, VN, ZHCN, ZHTW
Phase 2 assets (due date to be determined)		
Not available yet	Demo/training video (due early November)	EN
Not available yet	Intro marketing video (hardware/software – 90 seconds), EN due December, translations will follow	DE, ESES, ESLA, FR, IT, NL, PTBR, ZHCN
Not available yet	R&D marketing video, EN due December, translations will follow	DE, ESES, ESLA, FR, IT, NL, PTBR, ZHCN
TBD	Banners, Email and Landing page for Utilities, Oil & Gas and R&D campaigns	TBD based on opportunities in the countries each language serves

If you have any questions regarding these new products, or any of the other information in this announcement, please do not hesitate to contact your Fluke representative.