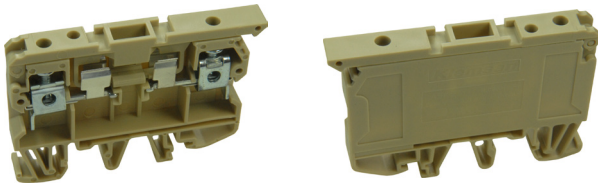


# Fuse Terminal

RoHS  
Compliant



## Technical Data

|   |                              |
|---|------------------------------|
| Number of Level                         | 1                            |
| Number of Connections                   | 2                            |
| Insulating Material                     | PA                           |
| Inflammability Class According to UL 94 | V2                           |
| Fuse                                    | G / 5×20 - 5×25              |
| Fuse Type                               | Glass                        |
| Rated Surge Voltage                     | 6kV                          |
| Pollution Degree                        | 3                            |
| Surge Voltage Category                  | III                          |
| Insulating Material Group               | I                            |
| Connection in acc. with Standard        | IEC 60947-7-3                |
| Nominal Current I <sub>N</sub>          | 6.3A (at 6 mm <sup>2</sup> ) |
| Nominal Voltage U <sub>N</sub>          | 500V                         |
| Continuous Operating Temp.              | 120°C Max.                   |
| Continuous Operating Temp.              | -55°C Min.                   |

## Dimensions

|                  |        |
|------------------|--------|
| Width            | 8mm    |
| Length           | 64.2mm |
| Height MR 35×7.5 | 45mm   |
| Height MR 35×15  | 52.5mm |
| Height MR 32     | 49.6mm |

## Connection Data

|  |   |
|--|---|
| Connection Method  | Screw connection                                      |
| Conductor Cross Section Solid  | 0.2mm <sup>2</sup> (Min.) to 10mm <sup>2</sup> (Max.) |
| Conductor Cross Section AWG/kcmil  | 24 AWG (Min.) to 8 AWG (Max.)                         |
| Conductor Cross Section Stranded   | 0.2mm <sup>2</sup> (Min.) to 10mm <sup>2</sup> (Max.) |
| Conductor Cross Section Stranded Sleeve  | 0.25mm <sup>2</sup> (Min.) to 6mm <sup>2</sup> (Max.) |
| 2 Conductors with Same Cross Section Stranded, TWIN Ferrules with Plastic Sleeve | 0.5mm <sup>2</sup> (Min.) to 4 mm <sup>2</sup> (Max.) |
| Stripping Length   | 10mm (Min.) to 12mm (Max.)                            |
| Internal Cylindrical Gage  | B5  |
| Tightening Torque  | 0.8Nm (Min.) to 1.2Nm (Max.)                          |

## Approvals

| UL                             |            |
|--------------------------------|------------|
| mm <sup>2</sup> /AWG/kcmil     | AWG 26 - 8 |
| Nominal current I <sub>N</sub> | 6.3 A      |
| Nominal voltage U <sub>N</sub> | 300 V      |

## Part Number Table

| Description                    | Part Number |
|--------------------------------|-------------|
| Fuse Block, 5mm×20mm, Din Rail | SPC11912.   |

**Important Notice** : This data sheet and its contents (the "Information") belong to the members of the Premier Farnell group of companies (the "Group") or are licensed to it. No licence is granted for the use of it other than for information purposes in connection with the products to which it relates. No licence of any intellectual property rights is granted. The Information is subject to change without notice and replaces all data sheets previously supplied. The Information supplied is believed to be accurate but the Group assumes no responsibility for its accuracy or completeness, any error in or omission from it or for any use made of it. Users of this data sheet should check for themselves the Information and the suitability of the products for their purpose and not make any assumptions based on information included or omitted. Liability for loss or damage resulting from any reliance on the Information or use of it (including liability resulting from negligence or where the Group was aware of the possibility of such loss or damage arising) is excluded. This will not operate to limit or restrict the Group's liability for death or personal injury resulting from its negligence. Multicomp is the registered trademark of the Group. © Premier Farnell plc 2012.