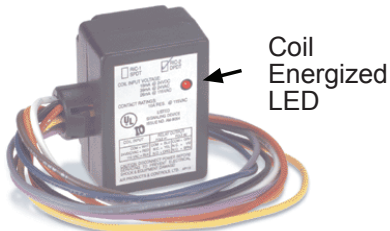


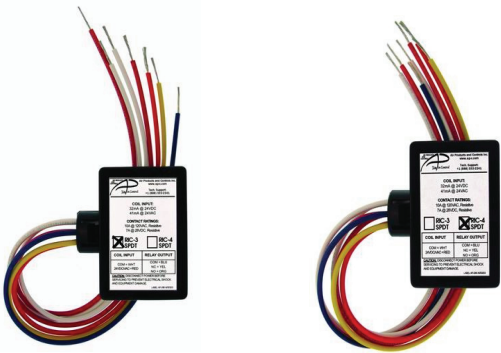
**NO EXCUSES!**



The **SSU-RIC-1** Relay, SPDT, provides 10.0 Amp resistive form C contacts. The relay coil may be energized by one of three input voltages: 24VDC, 24VAC, or 115VAC. **SAE PN# SSU-RIC-1**



The **SSU-RIC-2** Relay, DPDT, provides 10.0 Amp resistive form C contacts. The relay coil may be energized by one of three input voltages: 24VDC, 24VAC, or 115VAC. **SAE PN# SSU-RIC-2**



The **SSU-RIC-3** Relay, SPDT, provides 10.0 Amp resistive form C contacts. The relay coil may be energized by one of two input voltages: 24VDC (non-polarized) or 24VAC. **SAE PN# SSU-RIC-3**

The **SSU-RIC-4** Relay is identical except the 24VDC is polarity sensitive. **SAE PN#**



- Uses UL Recognized Components

**ISO 9001  
REGISTERED  
COMPANY**



Space Age Electronics, Inc.  
www.1sae.com  
**800.486.1723** voice  
508.485.0966 direct  
508.485.4740 fax



## RIC Series Relays (1 - 4)

The RIC Series is ideal for applications where remote relays are required for control or status feedback. They are suitable for use with HVAC, temperature control, fire alarms, security, energy management and lighting control systems.

The RIC Series Relay Modules are multi-voltage devices providing 10 Amp resistive dry form C contacts. These relays may be energized by one of three input voltages: 24VAC, 24VDC or 115VAC. A red LED is provided which when illuminated, indicates the relay coil is energized on the RIC-1 and RIC-2 only.

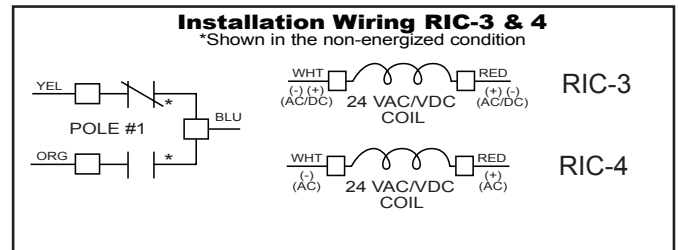
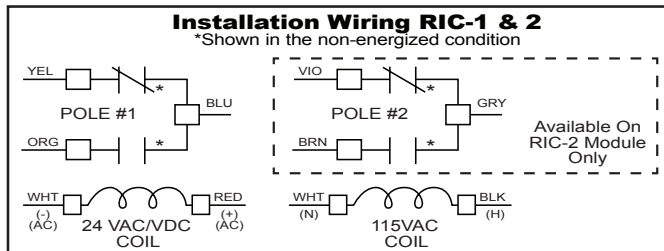
The RIC-3 and RIC-4 have a 2 - 3 Second "drop out" delay that allows the relay to remain actuated on dirty power or if a pulsed input is supplied.

To mount the RIC Series module, simply push the self-clinching spud through a 1/2" (12.7mm) knockout on a junction box and connect via the 12" long "flying" leads.

### Standard Features:

- 10 Amp resistive dry form C contacts
- Coil input voltages: 24VAC, 24VDC, or 115VAC
- Contains a red LED which illuminates when the coil is energized (RIC 1 & 2 only)
- Wire nuts included for installation
- UL listed, file # S3403
- 12" wire leads
- Sturdy full plastic enclosure

Model Number	RIC-1	RIC-2	RIC-3	RIC-4
Power Requirements	24VAC, 24VDC, 115VAC	24VAC, 24VDC, 115VAC	24VAC, 24VDC (non-polarized)	24VAC, 24VDC (polarized)
Polarized	No	No	No	Yes (DC Only)
Energized LED Indication	Yes	Yes	No	No
Coil Requirements				
@24VDC	18mA	18mA	32mA	32mA
@24VAC	39mA	39mA	41mA	41mA
@115VAC	26mA	26mA	NA	NA
Delay upon De-Energization	No	No	2 - 3 Seconds	2 - 3 Seconds
Contact Configuration	SPDT	DPDT	SPDT	SPDT
Contact Ratings				
@28VDC	7Amp Resistive	7Amp Resistive	7Amp Resistive	7Amp Resistive
@115VAC	10Amp Resistive / 0.35PF Inductive	10Amp Resistive / 0.35PF Inductive	10Amp Resistive / 0.35PF Inductive	10Amp Resistive / 0.35PF Inductive
Wiring Leads	6 "Flying Leads" 12" - 18 AWG Wire Nuts Provided	6 "Flying Leads" 12" - 18 AWG Wire Nuts Provided	7 "Flying Leads" 12" - 18 AWG Wire Nuts Provided	7 "Flying Leads" 12" - 18 AWG Wire Nuts Provided
Ambient Temperature @85% RH, Non-Condensing	32°F to 120°F 0°C to 40°C	32°F to 120°F 0°C to 40°C	NA NA	NA NA
Ambient Temperature @93% RH, Non-Condensing	NA NA	NA NA	32°F to 120°F 0°C to 40°C	32°F to 120°F 0°C to 40°C
Mounting	Spud Mounting through 1/2" Knockout	Spud Mounting through 1/2" Knockout	Spud Mounting through 1/2" Knockout	Spud Mounting through 1/2" Knockout
Dimensions	2.5" H x 1.75" W x 1.3" D	2.5" H x 1.75" W x 1.3" D	2.5" H x 1.75" W x 1.3" D	2.5" H x 1.75" W x 1.3" D
Listings and Approvals				
UL	UOXX / 7.S3403	UOXX / 7.S3403	UOXX / 7.S3403	UOXX / 7.S3403
MEA	73-92-E Vol. 23	73-92-E Vol. 23	73-92-E Vol. 23	73-92-E Vol. 23
CSFM	7300-1004:101	7300-1004:101	7300-1004:101	7300-1004:101



## Ordering Information:

Part #	Description
SSU-RIC-1	RIC-1 10 Amp Relay SPDT
SSU-RIC-2	RIC-2 10 Amp Relay DPDT
SSU-RIC-3	RIC-3 10 Amp Relay SPDT
SSU-RIC-4	RIC-4 10 Amp Relay SPDT



Space Age Electronics, Inc.  
www.1sae.com  
800.486.1723 voice  
508.485.0966 direct  
508.485.4740 fax

No Excuses, Just Solutions!

This document is subject to change without notice, see doc #ED0479 for legal disclaimer