

CHARACTERISSTICS

MATERIALS

SHELL : BRASS

SHELL PLATING : NICKEL

NUT : BRASS

NUT PLATING : NICKEL

LATCH SLEEVE : BRASS

LATCH SLEEVE PLATING : NICKEL

CONTACTS : COPPER ALLOY

CONTACT PLATING : 7μ" GOLD PLATED OVER 196μ" NICKEL MIN.

INSULATOR : PPS (HIGH TEMPERATURE)

O-RING: SILICONE

MECHANICAL

DURABILITY: 5000 CYCLES

OPERATING TEMP. RANGE: -40° C ~ +200° C

PROCESS TEMPERATURE : 260° C FOR 5 SECONDS

MAX. TORQUE VALUE : 9.0 Nm [79.0 IN/lbs]

SHIELDING: 75dB @ 10MHz

40dB @ 1GHz

IP RATING: 67

822K R YY - 2 1 3 R 00 1

SERIES 16.00 [0.630]

R = RIGHT ANGLE

OF POSITIONS (Ex. 002)

SEE CHART A

2 = FEMALE

1 = GOLD FLASH

RoHS COMPLIANT

NICKEL/CHROME PLATED SHELL

BOARD MOUNT (PANEL MOUNT)

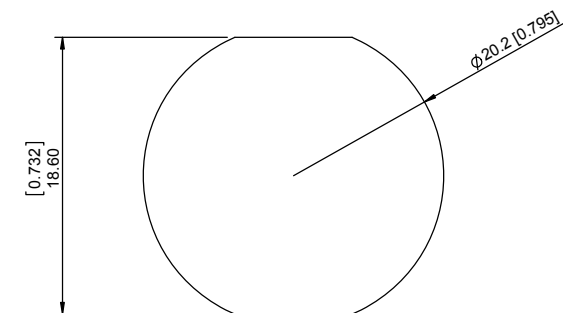
NOTE

SEE PAGE 2 FOR BOARD LAYOUTS

CHART A

● = KEY LOCATION

<p>2 POSITION 30 AMP MAX. PIN ϕ = 2.00 [0.079]</p> <p>CONTACT RESISTANCE = 3 mΩ TEST VOLTAGE = 2100V WORKING VOLTAGE = 700V</p>	<p>3 POSITION 17 AMP MAX. PIN ϕ = 1.60 [0.063]</p> <p>CONTACT RESISTANCE = 4 mΩ TEST VOLTAGE = 2400V WORKING VOLTAGE = 800V</p>	<p>4 POSITION 15 AMP MAX. PIN ϕ = 1.30 [0.051]</p> <p>CONTACT RESISTANCE = 5 mΩ TEST VOLTAGE = 1850V WORKING VOLTAGE = 610V</p>	<p>6 POSITION 12 AMP MAX. PIN ϕ = 1.30 [0.051]</p> <p>CONTACT RESISTANCE = 5 mΩ TEST VOLTAGE = 1350V WORKING VOLTAGE = 450V</p>
---	---	---	---



PANEL CUTOUT

TOLERANCE = +0.10, -0.0
[+0.004, -0.00]

RoHS COMPLIANT



THESE DRAWINGS AND SPECIFICATIONS ARE THE PROPERTY OF NorComp AND SHALL NOT BE REPRODUCED, COPIED OR USED AS THE BASIS FOR THE MANUFACTURE OR SALE OF APPARATUS WITHOUT WRITTEN PERMISSION.

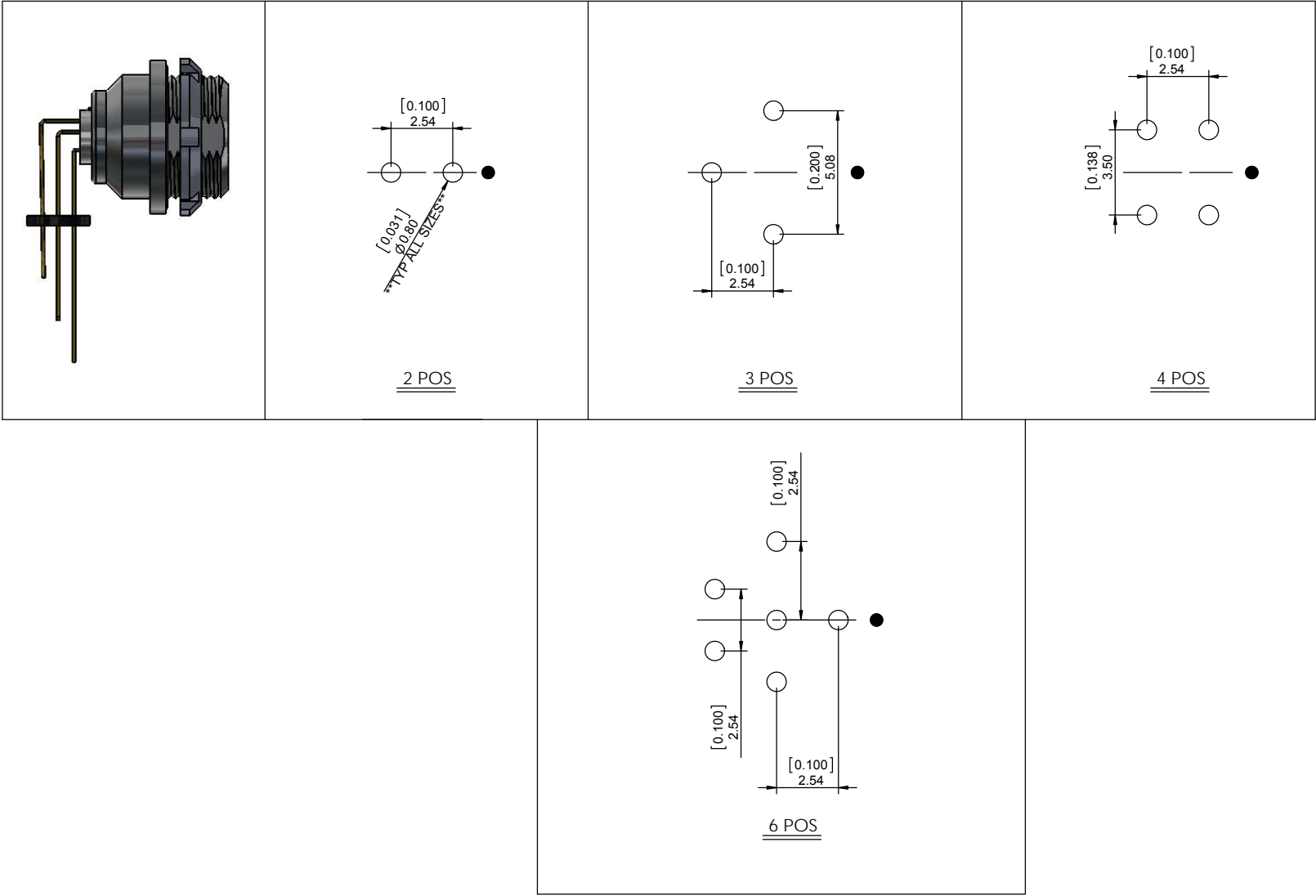
NorComp

DRAWN: M. SIGMON	DATE: 03-01-16	SCALE: N.T.S.	SHEET 1 OF 2	REV: 1
CHECKED:	DATE:		DWG NO. 822KRY-213R001	

BOARD LAYOUTS

NOTE : **HOLE DIAMETERS ARE TYPICAL ALL SIZES**

● = KEY LOCATION



RoHS COMPLIANT



THESE DRAWINGS AND SPECIFICATIONS ARE THE PROPERTY OF NorComp AND SHALL NOT BE REPRODUCED, COPIED OR USED AS THE BASIS FOR THE MANUFACTURE OR SALE OF APPARATUS WITHOUT WRITTEN PERMISSION.

NorComp

DRAWN: M. SIGMON	DATE: 03-01-16	SCALE: N.T.S.	SHEET 2 OF 2	REV: 1
CHECKED:	DATE:		DWG NO. 822KRY-213R001	