

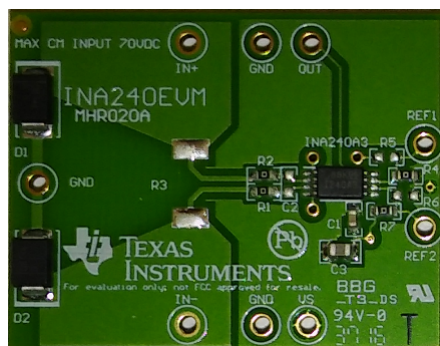
INA240EVM User's Guide

User's Guide



Literature Number: SBOU177
September 2016

INA240EVM User's Guide



This user's guide describes the characteristics, operation, and use of the INA240EVM evaluation module. This guide discusses how to set up and configure the hardware. Throughout this document, the terms *evaluation board*, *evaluation module*, and *EVM* are synonymous with the *INA240EVM*. This document includes an electrical schematic, printed circuit board (PCB) layout drawings, and a parts list for the EVM.

1 Overview

The [INA240](#) device is a voltage output current shunt monitor that senses drops across shunts at specified common-mode voltages from -4 V to 80 V , independent of the supply voltage.

NOTE: Note that this EVM limits the maximum common-mode voltage to 70 V with clamping diodes D1 and D2.

The device operates from a single 2.7-V to 5.5-V power supply, drawing a typical supply current of approximately 1 mA . The INA240EVM package includes one large PCB that can be broken apart into four separate PCBs, one for each of the four gain versions (INA240A1/A2/A3/A4). The EVM includes test points for external hardware connections, placeholder pads to add filtering components, and surface-mount resistors for ease of setting the reference.

1.1 INA240EVM Kit Contents

[Table 1](#) lists the contents of the INA240EVM kit. The included hardware is pictured on the front page that shows only one of the four INA240 devices and the associated EVM hardware. Contact the nearest [Texas Instruments Product Information Center](#) if any component is missing. Take care to check the [INA240 Product Folder](#) on the TI web site at www.ti.com for any further information regarding this product.

Table 1. INA240EVM Kit Contents

| ITEM | QUANTITY |
|-------------------------|----------|
| INA240A1 EVM test board | 1 |
| INA240A2 EVM test board | 1 |
| INA240A3 EVM test board | 1 |
| INA240A4 EVM test board | 1 |

1.2 Related Documentation from Texas Instruments

The following documents provide information regarding Texas Instruments' integrated circuits used in the assembly of the INA240EVM. This user's guide is available from the TI web site under literature number [SBOU177](#). Any letter appended to the literature number corresponds to the document revision that is current at the time of the writing of this document. Newer revisions may be available from the TI web site (www.ti.com), or by calling the Texas Instruments' Literature Response Center at (800) 477-8924 or the Product Information Center at (972) 644-5580. When ordering, identify the document by title and literature number.

[Table 2](#) lists related documentation for this device.

Table 2. Related Documentation

| DOCUMENT | LITERATURE NUMBER |
|--|-------------------------|
| <i>INA240 Wide Common-Mode Range, Voltage Output, High- or Low-Side Bidirectional, Zero-Drift, Current-Shunt Monitor</i> | SBOS662 |

2 INA240EVM Hardware

The INA240EVM requires a 2.7-V to 5.5-V power supply. Connect the VIN+ and VIN– pins across an external shunt resistor in series with a –4-V to 70-V supply to determine the current flowing through the resistor. Use a voltmeter on the OUT pin to measure the voltage output. The REF1 and REF2 pins set the output reference.

2.1 Theory of Operation for the INA240EVM

A block diagram of the INA240EVM test board hardware is shown in [Figure 1](#). The INA240 test board contains test points that provide access to all eight pins of the INA240 device for evaluation. A footprint is provided for the input filtering circuitry. The REF1 and REF2 pins are equipped with jumpers to set the output reference to VS, GND, half VS, or any desired external reference level.

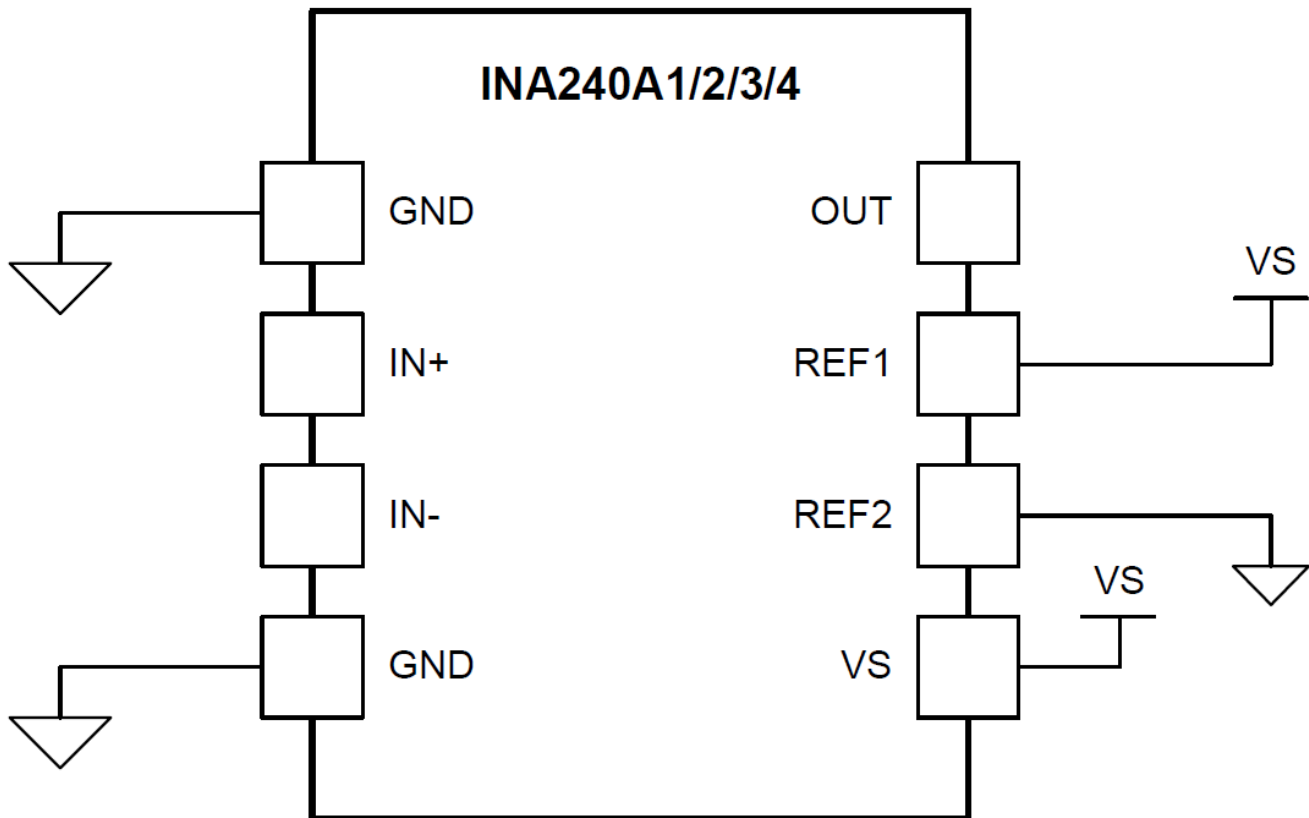


Figure 1. INA240EVM Test Board Block Diagram

2.2 INA240EVM Features

The INA240EVM provides a basic functional evaluation of the INA240. The fixture layout is not intended to be a model for the target circuit, or laid out for electromagnetic compatibility (EMC) testing.

The layout of the INA240EVM printed circuit board (PCB) provides the following features:

- Simple access to all device pins
- Multiple input signal options
- Space for optional input filtering
- Configurable reference pins

The INA240EVM connects to both sides of a remote shunt resistor to measure current, or omits the shunt resistor and applies a differential voltage directly to the device inputs. This flexibility allows the testing of device operation in a simulated manner and an actual application.

See [INA240 Wide Common-Mode Range, Voltage Output, High- or Low-Side Bidirectional, Zero-Drift, Current-Shunt Monitor](#) (SBOS662) for comprehensive information about the [INA240](#) family.

2.3 Quick-Start Setup and Use

Follow the procedure listed below to set up and use the INA240EVM:

1. Connect an external dc supply voltage between 2.7-V and 5.5-V to the VS test point.
2. Connect the desired input to input test points, IN+ and IN-. This input is a remote shunt resistor or a differential voltage source with a common-mode voltage of -4 V to 70 V referenced to GND. Note that the INA240 device has a rated common-mode voltage of 80 V , however the full 80 V is unavailable on the EVM because the input is limited by the D1 and D2 clamping diodes.

2.4 Voltage Inputs

The IN+ and IN- test points connect to a remote shunt resistor or a differential voltage source. The voltage differential is multiplied by the device gain of the INA240 device. There are four devices in this family, which include: the INA240A1 with 20-V/V gain, the INA240A2 with 50-V/V gain, the INA240A3 with 100-V/V gain, and the INA240A4 with 200-V/V gain. The full-scale sense input voltage (V_{SENSE}) is defined as $V_{\text{IN+}} - V_{\text{IN-}}$, and has a maximum input of $(V+ - 0.20)$ per gain to achieve linear output. The minimum voltage output is 10 mV.

2.5 Setting the Reference

The INA240 output is referenced to the voltage level defined by the REF1 and REF2 pins. The two reference pins independently connect to VS, GND, or an external source. It is possible to set the reference level to VS, GND, half VS, or an arbitrary level through external sources.

3 Schematic, PCB Layout, and Bill of Materials

3.1 Schematic

Figure 2 shows the complete schematic of the INA240 test board. Only the EVM associated with INA240A1 is shown. C1 and C3 are bypass capacitors for VS. C2, R1, and R2 create an optional filter for the VIN+ and VIN– inputs. R3 is an optional shunt resistor for the INA input. R4 through R7 are jumpers that enable the flexibility in configuring the reference level. The reference is set by splitting VS by default. D1 and D2 are clamps that limit the maximum common-mode voltage to 70 V, although the INA240 is rated at 80 V.

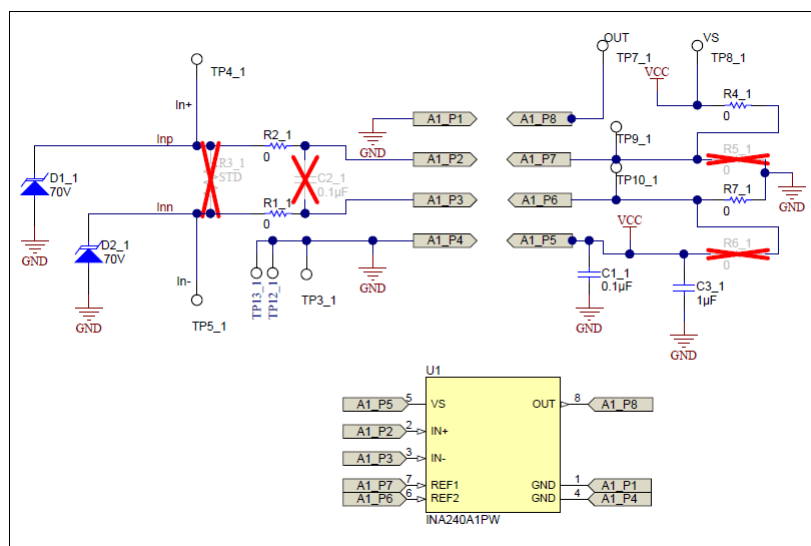


Figure 2. INA240EVM Test Board Schematic

3.2 PCB Layout

Figure 3 shows the component placement on the INA240EVM test board. There are no components on the bottom layer. Figure 4 and Figure 5 illustrate the top and bottom layers of the test board, respectively.

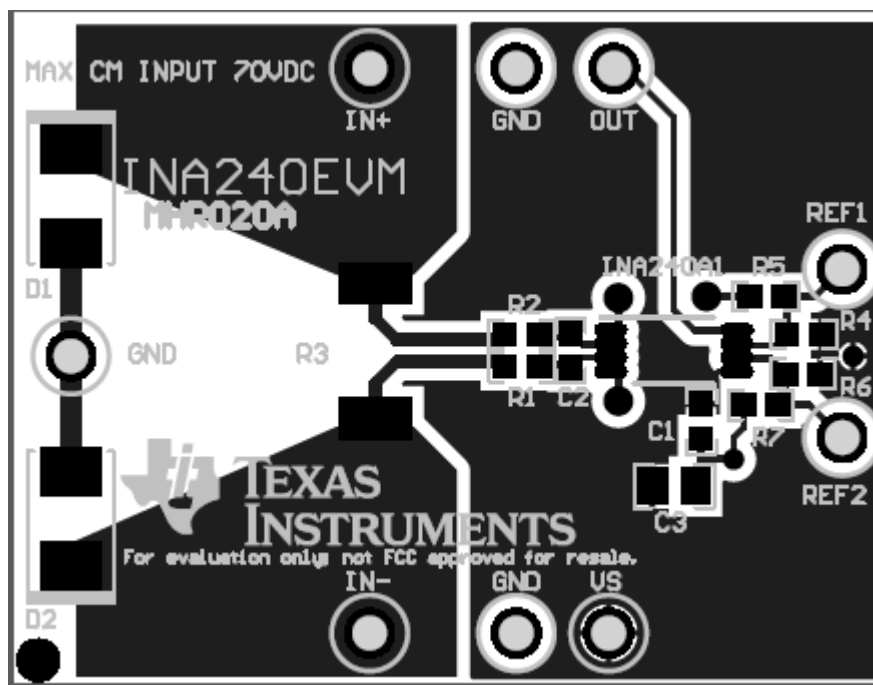


Figure 3. INA240EVM Component Placement

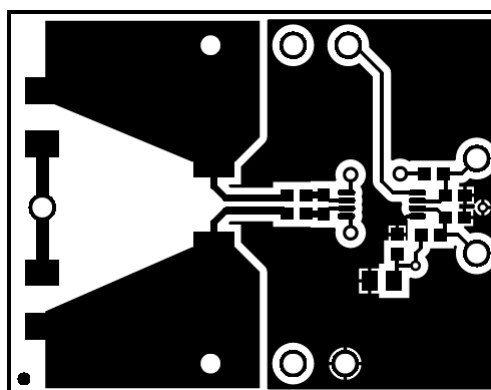


Figure 4. PCB Top Layer

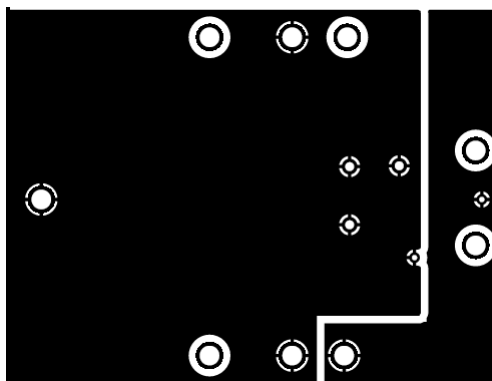


Figure 5. PCB Bottom Layer

3.3 Bill of Materials

Table 3 lists the bill of materials (BOM) for the INA240 test board, which includes four identical PCBs, one for each of the gain versions in the INA240 family.

Table 3. INA240 Test Board BOM

| QUANTITY | REFDES | DESCRIPTION | PART NUMBER | MANUFACTURER |
|----------|----------------|---|-----------------|-------------------|
| 4 | C1 | CAP, CERM, 0.1 μ F, 16 V, +/- 5%, X7R, 0603 | 0603YC104JAT2A | AVX |
| 4 | C3 | CAP, CERM, 1 μ F, 25 V, +/- 10%, X5R, 0805 | 08053D105KAT2A | AVX |
| 8 | D1, D2 | Diode, TVS, Uni, 70 V, 600 W, SMB | SMBJ70A-13-F | Diodes Inc. |
| 16 | R1, R2, R4, R7 | RES, 0, 5%, 0.1 W, 0603 | ERJ-3GEY0R00V | Panasonic |
| 16 | H9,H10,H11,H12 | Bumpon, Hemisphere, 0.44 x 0.20, Clear | SJ-5303 (CLEAR) | 3M |
| 1 | U1 | Wide Common-Mode Range, Voltage Output, High or Low-Side Bi-Directional Zero-Drift Current Shunt Monitor, PW0008A | INA240A1PW | ERJ-6GEY0R00V |
| 1 | U2 | Wide Common-Mode Range, Voltage Output, High or Low-Side Bi-Directional Zero-Drift Current Shunt Monitor, PW0008A | INA240A2PW | Texas Instruments |
| 1 | U3 | Wide Common-Mode Range, Voltage Output, High or Low-Side Bi-Directional Zero-Drift Current Shunt Monitor, PW0008A | INA240A3PW | Texas Instruments |
| 1 | U4 | Wide Common-Mode Range, Voltage Output, High or Low-Side Bi-Directional Zero-Drift Current Shunt Monitor, PW0008A | INA240A4PW | Texas Instruments |

IMPORTANT NOTICE

Texas Instruments Incorporated and its subsidiaries (TI) reserve the right to make corrections, enhancements, improvements and other changes to its semiconductor products and services per JESD46, latest issue, and to discontinue any product or service per JESD48, latest issue. Buyers should obtain the latest relevant information before placing orders and should verify that such information is current and complete. All semiconductor products (also referred to herein as "components") are sold subject to TI's terms and conditions of sale supplied at the time of order acknowledgment.

TI warrants performance of its components to the specifications applicable at the time of sale, in accordance with the warranty in TI's terms and conditions of sale of semiconductor products. Testing and other quality control techniques are used to the extent TI deems necessary to support this warranty. Except where mandated by applicable law, testing of all parameters of each component is not necessarily performed.

TI assumes no liability for applications assistance or the design of Buyers' products. Buyers are responsible for their products and applications using TI components. To minimize the risks associated with Buyers' products and applications, Buyers should provide adequate design and operating safeguards.

TI does not warrant or represent that any license, either express or implied, is granted under any patent right, copyright, mask work right, or other intellectual property right relating to any combination, machine, or process in which TI components or services are used. Information published by TI regarding third-party products or services does not constitute a license to use such products or services or a warranty or endorsement thereof. Use of such information may require a license from a third party under the patents or other intellectual property of the third party, or a license from TI under the patents or other intellectual property of TI.

Reproduction of significant portions of TI information in TI data books or data sheets is permissible only if reproduction is without alteration and is accompanied by all associated warranties, conditions, limitations, and notices. TI is not responsible or liable for such altered documentation. Information of third parties may be subject to additional restrictions.

Resale of TI components or services with statements different from or beyond the parameters stated by TI for that component or service voids all express and any implied warranties for the associated TI component or service and is an unfair and deceptive business practice. TI is not responsible or liable for any such statements.

Buyer acknowledges and agrees that it is solely responsible for compliance with all legal, regulatory and safety-related requirements concerning its products, and any use of TI components in its applications, notwithstanding any applications-related information or support that may be provided by TI. Buyer represents and agrees that it has all the necessary expertise to create and implement safeguards which anticipate dangerous consequences of failures, monitor failures and their consequences, lessen the likelihood of failures that might cause harm and take appropriate remedial actions. Buyer will fully indemnify TI and its representatives against any damages arising out of the use of any TI components in safety-critical applications.

In some cases, TI components may be promoted specifically to facilitate safety-related applications. With such components, TI's goal is to help enable customers to design and create their own end-product solutions that meet applicable functional safety standards and requirements. Nonetheless, such components are subject to these terms.

No TI components are authorized for use in FDA Class III (or similar life-critical medical equipment) unless authorized officers of the parties have executed a special agreement specifically governing such use.

Only those TI components which TI has specifically designated as military grade or "enhanced plastic" are designed and intended for use in military/aerospace applications or environments. Buyer acknowledges and agrees that any military or aerospace use of TI components which have **not** been so designated is solely at the Buyer's risk, and that Buyer is solely responsible for compliance with all legal and regulatory requirements in connection with such use.

TI has specifically designated certain components as meeting ISO/TS16949 requirements, mainly for automotive use. In any case of use of non-designated products, TI will not be responsible for any failure to meet ISO/TS16949.

Products

| | |
|------------------------------|--|
| Audio | www.ti.com/audio |
| Amplifiers | amplifier.ti.com |
| Data Converters | dataconverter.ti.com |
| DLP® Products | www.dlp.com |
| DSP | dsp.ti.com |
| Clocks and Timers | www.ti.com/clocks |
| Interface | interface.ti.com |
| Logic | logic.ti.com |
| Power Mgmt | power.ti.com |
| Microcontrollers | microcontroller.ti.com |
| RFID | www.ti-rfid.com |
| OMAP Applications Processors | www.ti.com/omap |
| Wireless Connectivity | www.ti.com/wirelessconnectivity |

Applications

| | |
|-------------------------------|--|
| Automotive and Transportation | www.ti.com/automotive |
| Communications and Telecom | www.ti.com/communications |
| Computers and Peripherals | www.ti.com/computers |
| Consumer Electronics | www.ti.com/consumer-apps |
| Energy and Lighting | www.ti.com/energy |
| Industrial | www.ti.com/industrial |
| Medical | www.ti.com/medical |
| Security | www.ti.com/security |
| Space, Avionics and Defense | www.ti.com/space-avionics-defense |
| Video and Imaging | www.ti.com/video |

TI E2E Community

e2e.ti.com