



## Main

|                                    |                     |
|------------------------------------|---------------------|
| Range of product                   | Harmony XVU         |
| Product or component type          | Modular tower light |
| Beacon or indicator bank unit type | Sound unit          |
| Mounting diameter                  | 60 mm               |
| Component name                     | XVU                 |
| Housing colour                     | Black               |

## Complementary

|                           |   |
|---------------------------|---|
| Signalling type           | Steady  |
| Material                  | PBT + ABS (UL94-V0) V-2 flame retardant conforming to UL 94 |
| Assembly style            | Customer assembly   |
| [Us] rated supply voltage | 24 V DC   |
| Power dissipation in W    | <= 4.1 W  |
| Current consumption       | <= 190 mA   |
| Length                    | 155 mm  |
| Product weight            | 0.219 kg  |

## Environment

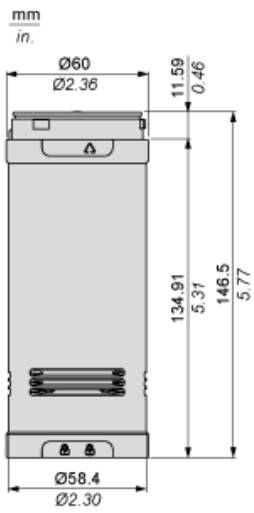
|                                       |                         |
|---------------------------------------|-------------------------|
| Product certifications                | CE<br>CSA<br>RoHS<br>UL |
| Ambient air temperature for storage   | -40...70 °C             |
| Ambient air temperature for operation | -20...50 °C             |
| IP degree of protection               | IP54                    |

## Offer Sustainability

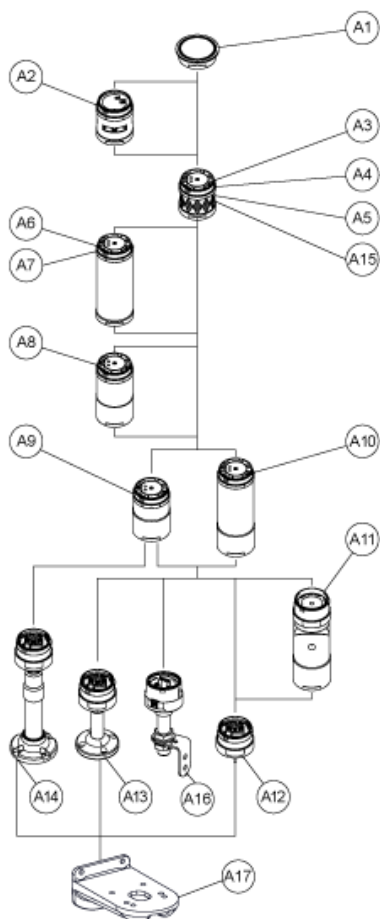
|                                  |   |
|----------------------------------|---|
| Sustainable offer status         | Green Premium product   |
| RoHS (date code: YYWW)           | Compliant - since 1444 - <a href="#">Schneider Electric declaration of conformity</a> |
| REACH                            | Reference not containing SVHC above the threshold                                     |
| Product environmental profile    | Available   |
| Product end of life instructions | Available   |

The information provided in this documentation contains general descriptions and/or technical characteristics of the performance of the products contained herein. This documentation is not intended as a substitute for and is not to be used for determining suitability or reliability of these products for specific user applications. It is the duty of any such user or integrator to perform the appropriate and complete risk analysis, evaluation and testing of the products with respect to the relevant specific application or use thereof. Neither Schneider Electric Industries SAS nor any of its affiliates or subsidiaries shall be responsible or liable for misuse of the information contained herein.

## Dimensions



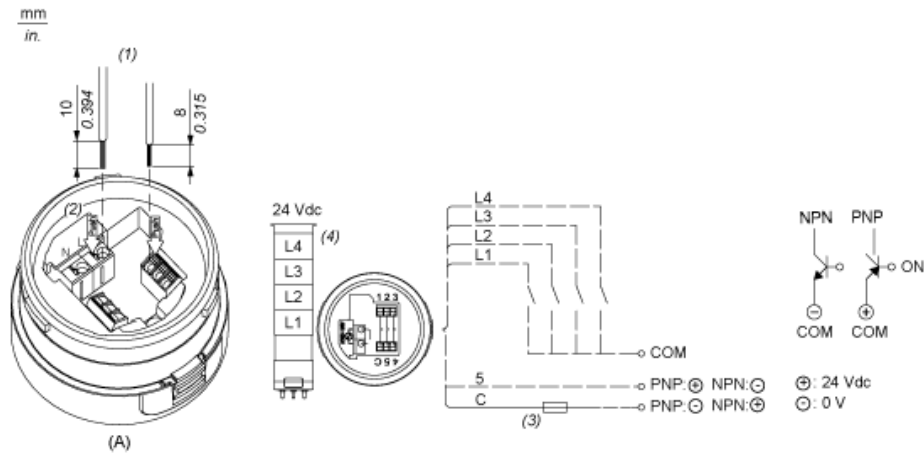
## Modular Tower Lights Mounting



| Drawing  | Part number          | Part name                    |
|----------|----------------------|------------------------------|
| A1       | -                    | Top cover                    |
| -        | Top cover (Silver)   |                              |
| A2       | XVUC9S               | Buzzer unit                  |
| XVUC9SQ  | Buzzer unit (Silver) |                              |
| A3       | XVUC23               | Green LED unit               |
| XVUC24   | Red LED unit         |                              |
| XVUC25   | Orange LED unit      |                              |
| XVUC26   | Blue LED unit        |                              |
| XVUC27   | White LED unit       |                              |
| XVUC28   | Yellow LED unit      |                              |
| A4       | XVUC29               | Multi-LED unit               |
| A5       | XVUC29P              | Multi-LED unit, Pulse signal |
| A6       | XVUC9V               | Sound unit                   |
| A7       | XVUC9VP              | Sound unit, Pulse signal     |
| A8       | XVUC020              | Extender                     |
| XVUC020Q | Extender (Silver)    |                              |
| A9       | XVUC21B              | DC body                      |

| Drawing   | Part number                                    | Part name   |
|-----------|--|---|
| XVUC21BQ  | DC body (Silver)                               |   |
| A10       | XVUC21M  | AC body NPN   |
| XVUC21MP  | AC body PNP                                    |   |
| XVUC21MQP | AC body PNP (Silver)                           |   |
| A11       | XVUZ06   | Flexible option                                       |
| A12       | XVUZ01   | Fixing Unit - Direct mounting (3 pins)                |
| XVUZ01Q   | Fixing Unit - Direct mounting (Silver,3 pins)  |   |
| XVUZ03    | Fixing Unit - Direct mounting (2 pins)         |   |
| XVUZ04    | Fixing Unit - Direct mounting (4 pins)         |   |
| A13       | XVUZ02   | Fixing Unit - Plate with Pole (100 mm)                |
| XVUZ02Q   | Fixing Unit - Plate with Pole (100 mm, Silver) |   |
| XVUZ400   | Fixing Unit - Plate with Pole (400 mm)         |   |
| XVUZ800   | Fixing Unit - Plate with Pole (800 mm)         |   |
| A14       | XVUZ05   | Fixing Unit - Plate with adjustment pole (100-385 mm) |
| A15       | XVUC43   | Green LED unit, Flash                                 |
| XVUC44    | Red LED unit, Flash                            |   |
| XVUC45    | Orange LED unit, Flash                         |   |
| XVUC46    | Blue LED unit, Flash                           |   |
| XVUC47    | White LED unit, Flash                          |   |
| XVUC48    | Yellow LED unit, Flash                         |   |
| A16       | XVUZ100T                                       | Fixing Unit - Metal bracket with pole (100 mm)        |
| XVUZ250T  | Fixing Unit - Metal bracket with pole(250 mm)  |   |
| XVUZ400T  | Fixing Unit - Metal bracket with pole (400 mm) |   |
| A17       | XVUZ12   | Fixing plate for use on vertical support - black      |

Illuminated Units, Multi-LED and Audible Units Wiring



- (A) Fixing Unit  
 (1) Dimensions of Wiring size  
 (2) Push-in Wire Connectors  
 (3) Fuse : 0.5A ,125V  
 (4) Modular Tower Lights 24 VDC  
 (5) 5: Power supply, 24VDC (PNP application) or GND (NPN application)  
 (6) C: Power supply, 24VDC (NPN application) or GND (PNP application)  
 L1 to Illuminated LED Units  
 L4 :