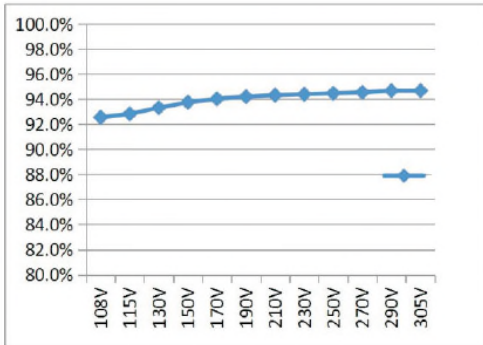


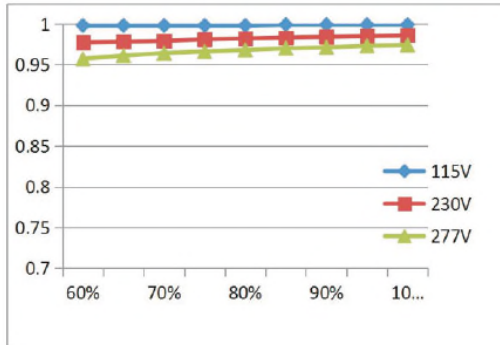


## LED Driver 480W to 600W series

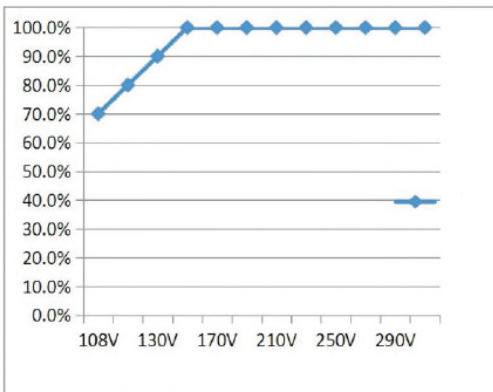
■ EFFICIENCY vs VOLTAGE



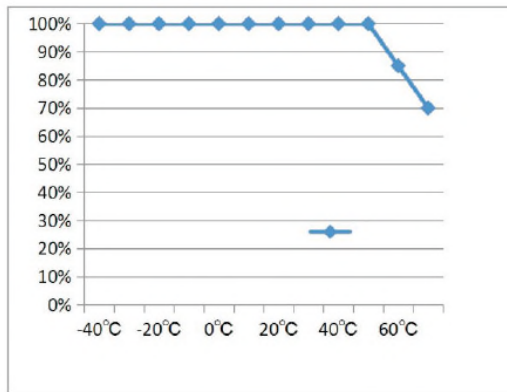
■ PF vs VOLTAGE



■ INPUT VOLTAGE vs OUTPUT LOAD



■ OUTPUT LOAD vs TEMPERATURE



Full specification documents on each part included in this data sheet are available on request from PowerPax UK Ltd. PowerPax accepts no responsibility for typographical errors in the production of this leaflet. Product specifications are subject to change without notice

# LED Driver 480W to 600W series

|   |  |  |
|---|--|--|
| Model number                            | LED-DR-12V-600W-A                          | LED-DR-24V-600W-A                          |
| Voltage adjustment range                | 10.2vdc to 12.6vdc                         | 20.4vdc to 25.2vdc                         |
| Minimum Output Volts for CC             | 6vdc                                       | 12vdc                                      |
| Maximum Rated Output Current            | 40 Amps                                    | 25 Amps                                    |
| Maximum Output Power                    | 480 Watts                                  | 600 Watts                                  |
| Maximum no load output voltage          | 14vdc                                      | 27vdc                                      |
| Ripple & Noise                          | 150mV (Vp-p)                               | 300mV (Vp-p)                               |
| Current Adjustment Range                | 20A—40A                                    | 12.5A—25A                                  |
| Current Tolerance                       | +/- 5%                                     | + / - 5%                                   |
| Line Regulation                         | + / - 1%                                   | + / - 1%                                   |
| Load Regulation                         | + / - 3%                                   | + / - 3%                                   |
| Input Range                             | 108vac—305vac 47—63Hz                      | 108—305vac 47—63Hz                         |
| Power Factor                            | PF > 0.95 (230vac 50Hz)                    | PF > (230vac 50Hz)                         |
| Efficiency                              | 92.5%                                      | 94.5%                                      |
| AC Current (Typical)                    | 3.0A / 230vac 6A / 115vac                  | 3.0A / 230vac 6A / 115vac                  |
| Leakage Current                         | 0.7mA MAX (230vac)                         | 0.7mA MAX (230vac)                         |
| Over Current Protection                 | 1.1 to 1.6 times rated load (auto recover) | 1.1 to 1.6 times rated load (auto recover) |
| Short Circuit Protection                | Hiccup mode auto recovery                  | Hiccup mode auto recovery                  |
| Over Voltage Protection                 | 17vdc max                                  | 32vdc max                                  |
| Over Temperature Protection             | 110+/- 10 degrees C (ntc)                  | 110+/- 10 degrees C (ntc)                  |
| Working Temp (refer to de-rating P2)    | -40 to + 70 degrees C                      | -40 to + 70 degrees C                      |
| Working Humidity                        | 15% to 95% RH                              | 15% to 95% RH                              |
| IP Rating                               | IP67                                       | IP67                                       |
| Vibration                               | 10—500Hz 2G 10/XYZ30                       | 10—500Hz 2G 10/XYZ30                       |
| Safety Standards                        | EN61347-1, EN61347-2-13                    | EN61347-1, EN61347-2-13                    |
| Withstand Voltage                       | IP: - OP 5.3KV DC 1 min                    | IP: - OP 5.3KV DC 1 min                    |
| EMC Emission                            | EN55015 FCC par15 Class B                  | EN55015 FCC par15 Class B                  |
| EMC Immunity                            | EN6100-4-2, 3, 4, 5, 6, 8, 11 , EN55024,   | and EN61547                                |
| Harmonic                                | EN61000-3-2 Class C (100% load)            | EN61000-3-2 Class C (100% load)            |
| MTBF                                    | 155K hours MIL-HDBK-217F (25degC)          | 155K hours MIL-HDBK-217F (25degC)          |
| Dimensions (refer to drawing P2)        | 263 x 124 x 45.5mm                         | 263 x 124 x 45.5mm                         |
| Warranty                                | 5 Years                                    | 5 Years                                    |
| Also available as 36vdc / 48vdc / 54vdc | nominal output voltage options             |  |
| Reliability                             | 100% full load test                        | 100% full load test                        |
| Suitable for                            | LED Lighting and display                   | LED lighting and display                   |
| Output voltage and current levels       | Adjusted by integral pot.                  | Adjusted by integral pot.                  |
| Cooling                                 | Free Air Convection                        | Free Air Convection                        |