

PLEASE CHECK WWW.MOLEX.COM FOR LATEST PART INFORMATION

Part Number: [0050579005](#)
Status: **Active**
Overview: [SL™ Modular Connectors](#)
Description: [SL™ Crimp Housing, Single Row, Version A, Non-polarized, 5 Circuits](#)

Documents:

3D Model	Product Specification PS-71851-001 (PDF)
Drawing (PDF)	Product Specification TS-70058-001-001 (PDF)
Product Specification PS-70058-001 (PDF)	Packaging Specification PK-70066-100 (PDF)
Product Specification PS-70400-001 (PDF)	RoHS Certificate of Compliance (PDF)

Agency Certification

CSA	LR19980
UL	E29179

General

Product Family	Crimp Housings
Series	70066
Application	Signal, Wire-to-Board
Comments	Version A
Overview	SL™ Modular Connectors
Product Name	SL™
UPC	800753629622

Physical

Circuits (maximum)	5
Color - Resin	Black
Flammability	94V-0
Gender	Female
Glow-Wire Compliant	No
Keying to Mating Part	None
Lock to Mating Part	No
Material - Resin	Polyester Alloy
Net Weight	0.400/g
Number of Rows	1
Packaging Type	Bag
Panel Mount	No
Pitch - Mating Interface	2.54mm
Stackable	Yes
Temperature Range - Operating	-40°C to +105°C

Electrical

Current - Maximum per Contact	3.0A
-------------------------------	------

Solder Process Data

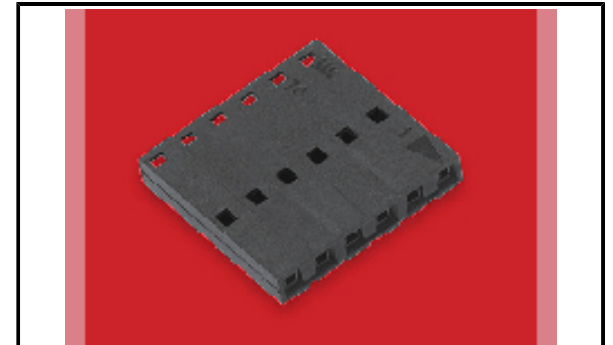
Lead-free Process Capability	N/A
------------------------------	-----

Material Info

Engineering Number	70066-0004
--------------------	------------

Reference - Drawing Numbers

Packaging Specification	PK-70066-100
Product Specification	PS-70058-001, PS-70400-001, PS-71851-001, TS-70058-001-001
Sales Drawing	SD-70066-0001-0024



Series image - Reference only

EU ELV

Not Relevant

EU RoHS

Compliant

REACH SVHC

Not Contained Per - ED/21/2016 (20 June 2016)

Halogen-Free

Status

Not Low-Halogen

Need more information on product environmental compliance?

Email productcompliance@molex.com
Please visit the [Contact Us](#) section for any non-product compliance questions.

China ROHS	Green Image
ELV	Not Relevant
RoHS Phthalates	Not Contained

Search Parts in this Series

[70066 Series](#)

Mates With

[42375](#) , [42377](#) , [70280](#) , [70287](#) , [71308](#) , [70543](#) , [70553](#)

Use With

SL™ Crimp Terminal [70058](#) , [71851](#)

PLEASE CHECK WWW.MOLEX.COM FOR LATEST PART INFORMATION