

# Sta-Kon® Disconnects



①



**RA18-250A**  
nylon open top  
insulated 90° flag  
installing tools –  
WT145C, WT2000,  
ERG-2001, ERG-2003,  
WT112M

②



**A18-250**  
non-insulated  
installing tools – WT111M,  
WT1110M, WT2000,  
ERG-2002, WT112M

③



**B14-250F**  
non-insulated/insulation  
grip installing  
tool – WT110M

④



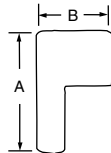
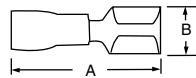
**A18-250A**  
non-insulated 90° flag  
installing tools –  
WT110M, WT111M,  
WT2000, ERG-2002,  
WT112M

⑤

## 250 Series – Female Disconnects – continued

	Cat. No.	Pkg. Qty.	Wire Range	Max. Ins.	Tab Size	Wt./Lbs. Per 1000	Dimensions	
							A	B
①	<b>RA18-250A</b>	50	22-18	.170	.250 x .032	4	.80	.71
	<b>RA2577F</b>	500	22-18	.170	.250 x .032	4	.80	.71
	<b>RB14-250A</b>	50	16-14	.190	.250 x .032	5	.80	.72
	<b>RB2577F</b>	500	16-14	.190	.250 x .032	5	.80	.72
	<b>RC10-250A</b>	50	12-10	.245	.250 x .032	6	.80	.88
	<b>RC2577F</b>	500	12-10	.245	.250 x .032	6	.80	.88
②	<b>A18-250</b>	100	22-18	–	.250 x .032	3	.73	.31
	<b>A250</b>	1000	22-18	–	.250 x .032	3	.73	.31
	<b>B14-250</b>	100	16-14	–	.250 x .032	3	.73	.31
	<b>B250</b>	1000	16-14	–	.250 x .032	3	.73	.31
	<b>C10-250F</b>	50	12-10	–	.250 x .032	4	.73	.31
	<b>C250</b>	500	12-10	–	.250 x .032	4	.73	.31
③	<b>B14-250F</b>	100	16-14	–	.250 x .032	5	.87	.31
	<b>B250G</b>	1000	16-14	–	.250 x .032	5	.87	.31
④	<b>A18-250A</b>	50	22-18	–	.250 x .032	3	.58	.61
	<b>A252G</b>	500	22-18	–	.250 x .032	3	.58	.61
	<b>B14-250A</b>	50	16-14	–	.250 x .032	3	.58	.62
	<b>B252G</b>	500	16-14	–	.250 x .032	3	.58	.62
	<b>C10-250A</b>	50	12-10	–	.250 x .032	4	.64	.63
	<b>C252G</b>	500	12-10	–	.250 x .032	4	.64	.63

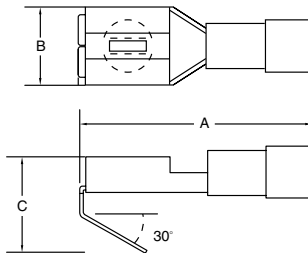
U.L. Listed E66716



## 250 Series – Piggy Back Disconnects – Nylon Insulated

	Cat. No.	Pkg. Qty.	Wire Range	Max. Ins.	Tab Size	Wt./Lbs. Per 1000	Dimensions		
							A	B	C
⑤	<b>RA18-250FP</b>	100	22-18	.136	.250 x .032	3	.87	.30	.43
	<b>RA250P</b>	1000	22-18	.136	.250 x .032	3	.87	.30	.43
	<b>RB14-250FP</b>	100	16-14	.163	.250 x .032	3	.87	.30	.43
	<b>RB250P</b>	1000	16-14	.163	.250 x .032	3	.87	.30	.43

For stacking applications  
Installing Tool – WT112M



*Most standard bulk catalog numbers can be put on Mylar Tape for reel fed applications (i.e. 12050 tool and application dies). See pages K61- K62 for description of tooling. Please add the suffix "M" for Mylar Tape (i.e. RA2573-M).*

**Thomas & Betts**