

PLEASE CHECK WWW.MOLEX.COM FOR LATEST PART INFORMATION

Part Number: [1510481609](#)
Status: **Active**
Overview: CP-6.5 Wire-to-Board Connector System
Description: CP-6.5 Header, 6.50mm Pitch, Dual Row, Vertical, Polarized, Positive Lock, Tray Packaging, 6 Circuits, Red

Documents:

[3D Model](#) [Packaging Specification PK-151048-0002 \(PDF\)](#)
[Drawing \(PDF\)](#) [RoHS Certificate of Compliance \(PDF\)](#)

Agency Certification

UL E29179

General

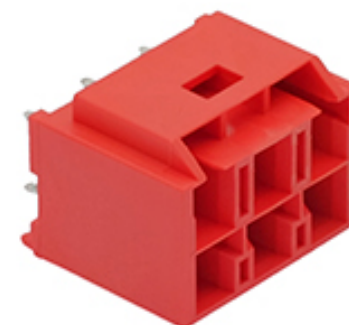
Product Family PCB Headers
Series [151048](#)
Application Wire-to-Board
Comments See Product Specification for maximum current rating by circuit size and wire AWG
Overview [CP-6.5 Wire-to-Board Connector System](#)
Product Name CP-6.5
UPC 889056067195

Physical

Breakaway No
Circuits (Loaded) 6
Circuits (maximum) 6
Color - Resin Red
Durability (mating cycles max) 30
First Mate / Last Break No
Flammability 94V-0
Glow-Wire Compliant No
Guide to Mating Part No
Keying to Mating Part Yes
Lock to Mating Part Yes
Material - Metal Copper Alloy
Material - Plating Mating Matte Tin
Material - Plating Termination Matte Tin
Material - Resin Polyamide
Net Weight 4.077/g
Number of Rows 2
Orientation Vertical
PC Tail Length 3.80mm
PCB Locator Yes
PCB Retention Yes
PCB Thickness - Recommended 1.60mm
Packaging Type Tray
Pitch - Mating Interface 6.50mm
Plating min - Mating 1.270µm
Plating min - Termination 1.270µm
Polarized to Mating Part Yes
Polarized to PCB Yes
Temperature Range - Operating -40°C to +105°C
Termination Interface: Style Through Hole

Electrical

Current - Maximum per Contact 10.0A



Series image - Reference only

EU ELV

Not Relevant

EU RoHS

Compliant

China RoHS

REACH SVHC

Not Contained Per -
ED/21/2016 (20 June
2016)

Halogen-Free

Status

Not Low-Halogen

**Need more information on product
environmental compliance?**

Email productcompliance@molex.com
Please visit the [Contact Us](#) section for any
non-product compliance questions.

China ROHS

Green Image

ELV

Not Relevant

Search Parts in this Series

[151048](#) Series

Mates With

CP-6.5 Receptacle Housing [151049-2609](#)

Voltage - Maximum	600V
Solder Process Data	
Lead-freeProcess Capability	WAVE
Material Info	
Reference - Drawing Numbers	
Packaging Specification	PK-151048-0002
Sales Drawing	SD-151048-0001

This document was generated on 07/18/2016

PLEASE CHECK WWW.MOLEX.COM FOR LATEST PART INFORMATION