

**PLEASE CHECK WWW.MOLEX.COM FOR LATEST PART INFORMATION**

**Part Number:** [0878312220](#)  
**Status:** **Active**  
**Overview:** [Milli-Grid™ Connector System](#)  
**Description:** 2.00mm Pitch Milli-Grid™ Header, Vertical, Through Hole, Shrouded, 22 Circuits, 0.38µm Gold (Au) Plating, Center Polarization Slot, with Locking Windows, without PCB Locator, Tube

**Documents:**

[3D Model](#) [Packaging Specification PK-87831-001 \(PDF\)](#)  
[Drawing \(PDF\)](#) [RoHS Certificate of Compliance \(PDF\)](#)  
[Product Specification PS-87831-027 \(PDF\)](#)

**Agency Certification**

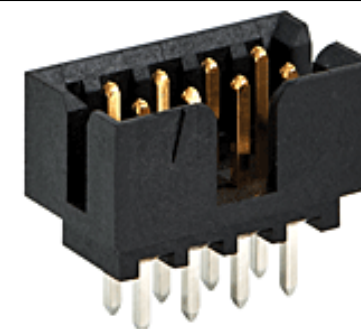
CSA LR19980  
 UL E29179

**General**

Product Family PCB Headers  
 Series [87831](#)  
 Application Signal, Wire-to-Board  
 Comments Contact Molex for application in automotive industry  
 Overview [Milli-Grid™ Connector System](#)  
 Product Name Milli-Grid™  
 UPC 822348274147

**Physical**

Breakaway No  
 Circuits (Loaded) 22  
 Circuits (maximum) 22  
 Color - Resin Black  
 Durability (mating cycles max) 100  
 First Mate / Last Break No  
 Flammability 94V-0  
 Glow-Wire Compliant No  
 Guide to Mating Part No  
 Keying to Mating Part None  
 Lock to Mating Part Yes  
 Material - Metal Phosphor Bronze  
 Material - Plating Mating Gold  
 Material - Plating Termination Tin  
 Material - Resin Nylon  
 Net Weight 1.005/g  
 Number of Rows 2  
 Orientation Vertical  
 PC Tail Length 2.50mm  
 PCB Locator No  
 PCB Retention None  
 PCB Thickness - Recommended 1.60mm  
 Packaging Type Tube  
 Pitch - Mating Interface 2.00mm  
 Pitch - Termination Interface 2.00mm  
 Plating min - Mating 0.381µm  
 Plating min - Termination 1.905µm  
 Polarized to PCB No  
 Shrouded Yes  
 Stackable No  
 Surface Mount Compatible (SMC) Yes



*Series image - Reference only*

**EU ELV**

**Not Relevant**

**EU RoHS**

**Compliant**

**REACH SVHC**

Not Contained Per -  
 ED/21/2016 (20 June  
 2016)

**Halogen-Free**

**Status**

**Not Low-Halogen**

**Need more information on product  
 environmental compliance?**

Email [productcompliance@molex.com](mailto:productcompliance@molex.com)  
 Please visit the [Contact Us](#) section for any  
 non-product compliance questions.

China ROHS

ELV

Green Image

Not Relevant

**Search Parts in this Series**

[87831](#) Series

**Mates With**

Milli-Grid™ Vertical Through Hole  
 Receptacle [79107](#) , [78787](#) , Milli-Grid™  
 Flex-to-Board Vertical Receptacle [79108](#)  
 , Milli-Grid™ Vertical Surface Mount  
 Receptacle [79109](#) , [78788](#) , Milli-Grid™  
 Crimp Housing [51110](#) , Milli-Grid™ Cable-to-  
 Board Receptacle [87568](#)

Temperature Range - Operating	-55°C to +105°C
Termination Interface: Style	Through Hole

**Electrical**

Current - Maximum per Contact	2.0A
Voltage - Maximum	125V

**Solder Process Data**

Duration at Max. Process Temperature (seconds)	010
Lead-free Process Capability	WAVE
Max. Cycles at Max. Process Temperature	001
Process Temperature max. C	260

**Material Info****Reference - Drawing Numbers**

Packaging Specification	PK-87831-001
Product Specification	PS-87831-027
Sales Drawing	SD-87831-0001

This document was generated on 08/02/2016

**PLEASE CHECK [WWW.MOLEX.COM](http://WWW.MOLEX.COM) FOR LATEST PART INFORMATION**