

Industrial plugs and sockets Extra low voltage (ELV)

We will make changes to our offering for extra low voltage (ELV).

The current range will be replaced and the main improvement is that we will add also IP67 versions to our offering. Our range of Industrial plugs and sockets for extra low voltage covers voltages up to 50V AC or DC and fulfills IEC 60309.

The old range will be available for the remainder of 2015, since we will no longer hold inventory of the old range delivery time might increase during the year.

Extra low voltage is one way to protect from electrical shock. Extra-low voltage is used where the risks are great: swimming pools, wandering-lead hand lamps, and other portable appliances for outdoor use, etc.



The plugs and sockets are intended for an operating voltage not exceeding 50 V. Their rated voltage is 24 V and 50 V for 16 A and 32 A.

Standards

The products are designed according to the following standards: IEC 60 309-1, 60 309-2.

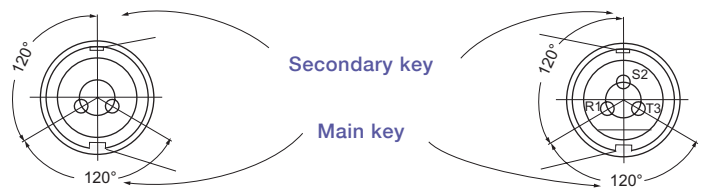
Connections

Screw type terminals.

Non-interchangeability

To achieve non-interchangeability, the plugs and sockets have a main key and a secondary key. The position of the secondary key is indicated by a number followed by a letter h (the hour position or o'clock position). The number is determined by the position of the secondary key relative to the main key, the position of which is defined as 6 o'clock. Non hour position is given for 20-25 V, 50-60 Hz, since there is no secondary key on these plugs and sockets.

The width of the key is different for 16 A and 32 A plugs and sockets. In addition, there is a color coding system: The cover or front part is violet on 20-25 V and white on 40-50 V plugs and sockets. Plugs and sockets for direct current are grey.



Positions and connections of the contact

Table according to IEC 60309-2

Plugs and sockets for max. 50 V.

Poles	Rated Voltage V	Frequency Hz	Position of secondary key	Color code
2	20-25	50-60	(none)	Violet
		40-50	12 h	White
	20-25 and 40-50	100-200	4 h	Green
		300	2 h	Green
		400	3 h	Green
		>400-500	11 h	Green
		DC	10 h	Grey
3	20-25	50-60	(none)	Violet
		40-50	12 h	White
	20-25 and 40-50	100-200	4 h	Green
		300	2 h	Green
		400	3 h	Green
		>400-500	11 h	Green

Ordering details

Plugs



Type	Order code	Color code	Poles	Voltage V	Frequency Hz	Pack	Weight pkg (1 pce) kg	Replacing type	Replacing Order code
------	------------	------------	-------	--------------	-----------------	------	-----------------------------	----------------	----------------------

Plugs 16Amp IP44

Plastic housing (PA), cable entry with compression gland

PLV216	2CMA100877R1000	Violet	2	20-25 AC	50 and 60	10	0,142	CPT 216	2CMA179277R1000
PLV216-12	2CMA100878R1000	White	2	40-50 AC	50 and 60	10	0,142	CPT 216-12	2CMA179278R1000
PLV216-10	2CMA100879R1000	Grey	2	25 and 50 DC	-	10	0,142	CPT 216-10	2CMA179279R1000

PLV316	2CMA100880R1000	Violet	3	20-25 AC	50 and 60	10	0,16	CPT 316	2CMA179279R1000
PLV316-12	2CMA100881R1000	White	3	40-50 AC	50 and 60	10	0,16	CPT 316-12	2CMA179280R1000
PLV316-4	2CMA100882R1000	Green	3	25 and 50 AC	100-200	10	0,16	CPT 316-4	2CMA179281R1000

Plugs 32Amp IP44

Plastic housing (PA), cable entry with compression gland

PLV232	2CMA100883R1000	Violet	2	20-25 AC	50 and 60	10	0,142	CPT 232	2CMA179283R1000
PLV232-12	2CMA100884R1000	White	2	40-50 AC	50 and 60	10	0,142	CPT 232-12	2CMA179296R1000
PLV232-10	2CMA100885R1000	Grey	2	25 and 50 DC	-	10	0,142	CPT 232-10	2CMA179284R1000

PLV332	2CMA100886R1000	Violet	3	20-25 AC	50 and 60	10	0,16	CPT 332	2CMA179285R1000
PLV332-12	2CMA100887R1000	White	3	40-50 AC	50 and 60	10	0,16	CPT 332-12	2CMA179286R1000
PLV332-4	2CMA100888R1000	Green	3	25 and 50 AC	100-200	10	0,16	CPT 332-4	2CMA179287R1000

Plugs 16Amp IP67

Plastic housing (PA), cable entry with compression gland



PLV216W	2CMA100889R1000	Violet	2	20-25 AC	50 and 60	10	0,164		
PLV216-12W	2CMA100890R1000	White	2	40-50 AC	50 and 60	10	0,164		
PLV216-10W	2CMA100891R1000	Grey	2	25 and 50 DC	-	10	0,164		

PLV316W	2CMA100892R1000	Violet	3	20-25 AC	50 and 60	10	0,182		
PLV316-12W	2CMA100893R1000	White	3	40-50 AC	50 and 60	10	0,182		
PLV316-4W	2CMA100894R1000	Green	3	25 and 50 AC	100-200	10	0,182		

Plugs 32Amp IP67

Plastic housing (PA), cable entry with compression gland

PLV232W	2CMA100895R1000	Violet	2	20-25 AC	50 and 60	10	0,164		
PLV232-12W	2CMA100896R1000	White	2	40-50 AC	50 and 60	10	0,164		
PLV232-10W	2CMA100897R1000	Grey	2	25 and 50 DC	-	10	0,164		

PLV332W	2CMA100898R1000	Violet	3	20-25 AC	50 and 60	10	0,182		
PLV332-12W	2CMA100899R1000	White	3	40-50 AC	50 and 60	10	0,182		
PLV332-4W	2CMA100900R1000	Green	3	25 and 50 AC	100-200	10	0,182		

Ordering details

Connectors



Type	Order code	Color code	Poles	Voltage V	Frequency Hz	Pack	Weight pkg (1 pce) kg	Replacing type	Replacing Order code
------	------------	------------	-------	--------------	-----------------	------	-----------------------------	----------------	----------------------

Connector 16Amp IP44

Plastic housing (PA), cable entry with compression gland

CLV216	2CMA100901R1000	Violet	2	20-25 AC	50 and 60	10	0,177	CST 216	2CMA179288R1000
CLV216-12	2CMA100902R1000	White	2	40-50 AC	50 and 60	10	0,177	CST 216-12	2CMA179289R1000
CLV216-10	2CMA100903R1000	Grey	2	25 and 50 DC	-	10	0,177	CST 216-10	2CMA179290R1000

CLV316	2CMA100904R1000	Violet	3	20-25 AC	50 and 60	10	0,198	CST 316	2CMA179291R1000
CLV316-12	2CMA100905R1000	White	3	40-50 AC	50 and 60	10	0,198	CST 316-12	2CMA179292R1000
CLV316-4	2CMA100906R1000	Green	3	25 and 50 AC	100-200	10	0,198	CST 316-4	2CMA179293R1000

Connector 32Amp IP44

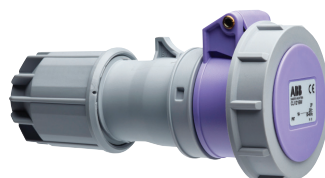
Plastic housing (PA), cable entry with compression gland

CLV232	2CMA100907R1000	Violet	2	20-25 AC	50 and 60	10	0,178	CST 232	2CMA179297R1000
CLV232-12	2CMA100908R1000	White	2	40-50 AC	50 and 60	10	0,178	CST 232-12	2CMA179306R1000
CLV232-10	2CMA100909R1000	Grey	2	25 and 50 DC	-	10	0,178	CST 232-10	2CMA179295R1000

CLV332	2CMA100910R1000	Violet	3	20-25 AC	50 and 60	10	0,198	CST 332	2CMA179307R1000
CLV332-12	2CMA100911R1000	White	3	40-50 AC	50 and 60	10	0,198	CST 332-12	2CMA179328R1000
CLV332-4	2CMA100912R1000	Green	3	25 and 50 AC	100-200	10	0,198	CST 332-4	2CMA179329R1000

Connector 16Amp IP67

Plastic housing (PA), cable entry with compression gland



CLV216W	2CMA100913R1000	Violet	2	20-25 AC	50 and 60	10	0,199		
CLV216-12W	2CMA100914R1000	White	2	40-50 AC	50 and 60	10	0,199		
CLV216-10W	2CMA100915R1000	Grey	2	25 and 50 DC	-	10	0,199		

CLV316W	2CMA100916R1000	Violet	3	20-25 AC	50 and 60	10	0,219		
CLV316-12W	2CMA100917R1000	White	3	40-50 AC	50 and 60	10	0,219		
CLV316-4W	2CMA100918R1000	Green	3	25 and 50 AC	100-200	10	0,219		

Connector 32Amp IP67

Plastic housing (PA), cable entry with compression gland

CLV232W	2CMA100919R1000	Violet	2	20-25 AC	50 and 60	10	0,199		
CLV232-12W	2CMA100920R1000	White	2	40-50 AC	50 and 60	10	0,199		
CLV232-10W	2CMA100921R1000	Grey	2	25 and 50 DC	-	10	0,199		
CLV332W	2CMA100922R1000	Violet	3	20-25 AC	50 and 60	10	0,219		
CLV332-12W	2CMA100923R1000	White	3	40-50 AC	50 and 60	10	0,219		
CLV332-4W	2CMA100924R1000	Green	3	25 and 50 AC	100-200	10	0,219		

Ordering details

Sockets and inlets



Type	Order code	Color code	Poles	Voltage	Frequency	Pack	Weight pkg (1 pce)	Replacing type	Replacing Order code
				V	Hz		kg		

Flanged socket straight 16Amp IP44 (55x55)

Plastic housing (PA)

RLV216	2CMA100973R1000	Violet	2	20-25 AC	50 and 60	10	0,099	CUIT 216	2CMA179309R1000
RLV216-12	2CMA100974R1000	White	2	40-50 AC	50 and 60	10	0,099	CUIT 216-12	2CMA179310R1000
RLV216-10	2CMA100975R1000	Grey	2	25 and 50 DC	-	10	0,099	CUIT 216-10	2CMA179311R1000

RLV316	2CMA100976R1000	Violet	3	20-25 AC	50 and 60	10	0,114		
RLV316-12	2CMA100977R1000	White	3	40-50 AC	50 and 60	10	0,114		
RLV316-4	2CMA100978R1000	Green	3	25 and 50 AC	100-200	10	0,114		

Flanged socket straight 32Amp IP44 (55x55)

Plastic housing (PA)

RLV232	2CMA100979R1000	Violet	2	20-25 AC	50 and 60	10	0,099	CUIT 232	2CMA179312R1000
RLV232-12	2CMA100980R1000	White	2	40-50 AC	50 and 60	10	0,099	CUIT 232-12	2CMA179331R1000
RLV232-10	2CMA100981R1000	Grey	2	25 and 50 DC	-	10	0,099	CUIT 232-10	2CMA179332R1000

RLV332	2CMA100982R1000	Violet	3	20-25 AC	50 and 60	10	0,114		
RLV332-12	2CMA100983R1000	White	3	40-50 AC	50 and 60	10	0,114		
RLV332-4	2CMA100984R1000	Green	3	25 and 50 AC	100-200	10	0,114		

Socket outlet for surface mounting 16Amp IP44

Plastic housing (PA), threaded cable entry M25

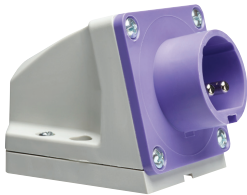


RSLV216	2CMA100985R1000	Violet	2	20-25 AC	50 and 60	10	0,198	CUGT 216	2CMA179298R1000
RSLV216-12	2CMA100986R1000	White	2	40-50 AC	50 and 60	10	0,198	CUGT 216-12	2CMA179299R1000
RSLV216-10	2CMA100987R1000	Grey	2	25 and 50 DC	-	10	0,198	CUGT 216-10	2CMA179300R1000

RSLV316	2CMA100988R1000	Violet	3	20-25 AC	50 and 60	10	0,215	CUGT 316	2CMA179301R1000
RSLV316-12	2CMA100989R1000	White	3	40-50 AC	50 and 60	10	0,215	CUGT 316-12	2CMA179302R1000
RSLV316-4	2CMA100990R1000	Green	3	25 and 50 AC	100-200	10	0,215	CUGT 316-4	2CMA179303R1000

Inlets for surface mounting 16Amp IP44

Plastic housing (PA), threaded cable entry M25



BSLV216	2CMA100991R1000	Violet	2	20-25 AC	50 and 60	10	0,165	CIGT 216	2CMA179323R1000
BSLV216-12	2CMA100992R1000	White	2	40-50 AC	50 and 60	10	0,165	CIGT 216-12	2CMA179324R1000
BSLV216-10	2CMA100993R1000	Grey	2	25 and 50 DC	-	10	0,165	CIGT 216-10	2CMA179325R1000

BSLV316	2CMA100994R1000	Violet	3	20-25 AC	50 and 60	10	0,18	CIGT 316	2CMA179326R1000
BSLV316-12	2CMA100995R1000	White	3	40-50 AC	50 and 60	10	0,18	CIGT 316-12	2CMA179327R1000
BSLV316-4	2CMA100996R1000	Green	3	25 and 50 AC	100-200	10	0,18	CIGT 316-4	2CMA179335R1000

© Copyright 2015 ABB. All rights reserved.
Specification subject to change without notice.

For more information please contact

ABB AB
Low Voltage Products
S-611 29 NYKÖPING, Sweden
Phone: +46 155 29 50 00

www.abb.com/lowvoltage



Power and productivity
for a better world™

