

Brand New! Unique Product Development!

High-Power Thru Panel Terminal Block

Pitch: 35mm

600 Volts / 250 Amps

PART#:
OTB-588

Type:
High-Power Thru Panel

Features:
Thru Panel
Barrier Construction

Applications:
Suitable for:
Electrical Switch Gear
Off Highway Vehicles

Electrical
Rated Voltage:
600V
Rated Current:
250A

Wire Size:
4/0 Stranded CU

Operating Temperature:
-40C to +90C

Materials
Housing:
Polycarbonate (UL94V-0)
Standard Color: Black

Cover:
Polycarbonate (UL94V-0)

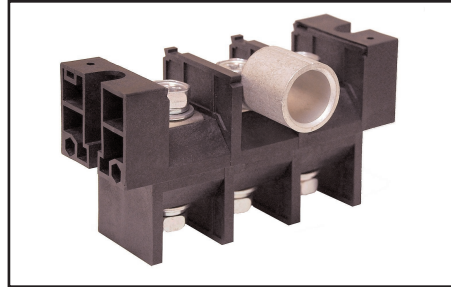
Terminal:
Copper, Nickel Plated

Positions Available:
1-12

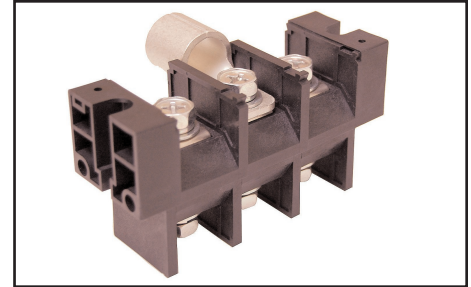
Bolt Size:
M10, Steel

Withstanding Voltage:
AC2500V

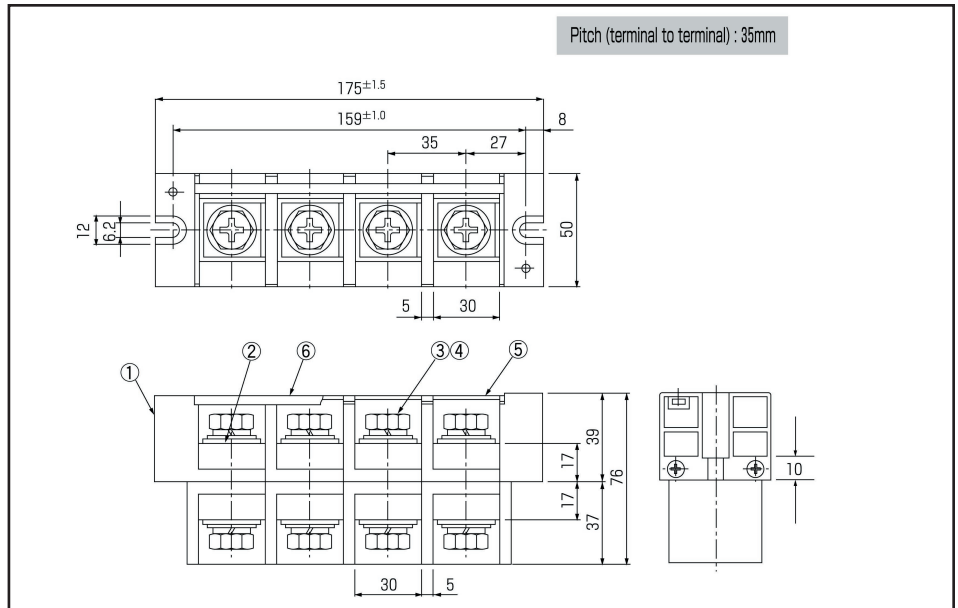
Torque:
30 inch lbs.



OTB-588



Typical Application



BlockMaster Electronics' new OTB-588 Series are high power, thru-panel terminal blocks available in 1-12 positions.

BlockMaster's OTB-358 series are perfect for interfacing internally wired products to the outside world. They offer a clear, protective cover to reduce shock hazard, and each terminal has a hex head screw with lock washer for convenient field wiring as shown. Suitable for industrial controls, electrical switch gear or any high-power application.



HOW TO ORDER:

OTB-588



**Poles
2-10**



1/30/08

World Class Terminal Blocks

1400 Howard Street Phone: (847) 956-1680
Elk Grove Village, IL 60007 Fax: (847) 956-1690

www.BlockMaster.com