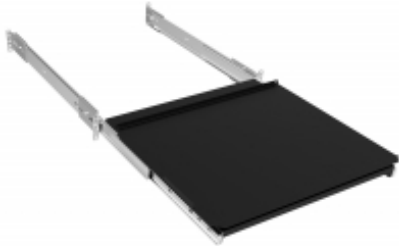


Rotating Equipment Slide-out Base *RSKS Series*

Features



- Standard 19" rack mount
- Supplied as shown complete with two slides and mounting hardware
- Mounts to front & rear panel rails of racks
- Accommodates front rail to rear rail spacing from 19.8" to a maximum of 34.8" deep
- Uses only 5.25" (3U) of panel space
- Unique design allows the use of a full size keyboard (not included) housed in the rack shelf.
- Top tray of drawer swivels clockwise 90 degrees, once pulled outside the front of the rack.
- Rugged textured black powder paint finish.
- RoHS and REACH compliant.
- Manufactured in North America.

Gallery



Accessories

- Mounting Hardware
- Four Post Mounting Equipment Slides

Part No.	Height	Mounting Dimensions	
		Rack Units	Depth
RSKS19005BK1	5.25	3U	15.00
RSKS19DOORBK1	Hinged Locking Door for RSKS Keyboard Drawer		

NOTE: Will NOT work in our 17" deep racks (as slides are too deep).

Data subject to change without notice

