



Main

Range of product	Modicon M171
Product or component type	Communication module
Communication port protocol	BACnet MS/TP HTTP SMTP BACnet IP Ethernet Modbus RTU RS485 Modbus TCP

Complementary

Integrated connection type	Ethernet RJ45 - twisted pair RS485 wire crimp - twisted pair
Mounting adjustment	Pitch 3.81 mm
Electrical connection	Removable screw terminal block
Physical interface	90° insertion - 2.5 mm ² cable RJ45
Supply	Via base board EVD/EVC
Product compatibility	Logic controller M171 performance
Product weight	0.077 kg

Environment

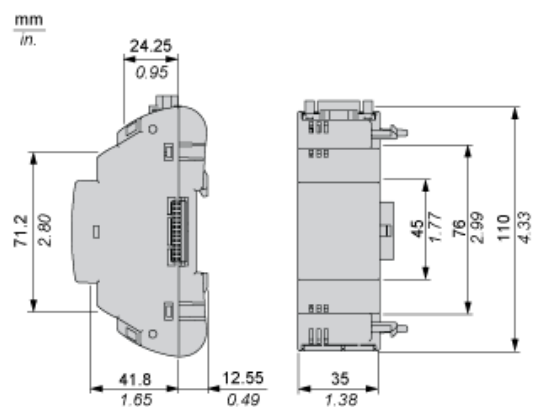
Product certifications	CSA EAC CE cURus
Marking	CE
IP degree of protection	IP20
Ambient air temperature for operation	-10...55 °C

Ambient air temperature for storage	-20...85 °C
Relative humidity	10...90 % without condensation

Offer Sustainability

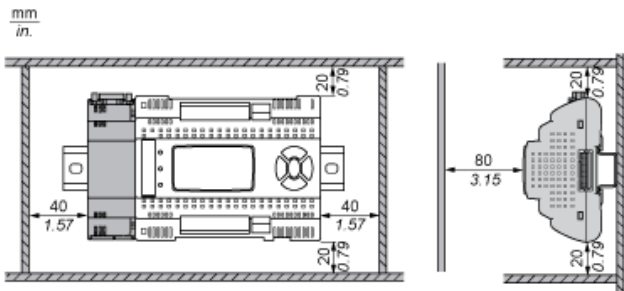
Sustainable offer status	Not Green Premium product
RoHS (date code: YYWW)	Compliant - since 1429 - Schneider Electric declaration of conformity Schneider Electric declaration of conformity
REACH	Reference not containing SVHC above the threshold Reference not containing SVHC above the threshold

Dimensions

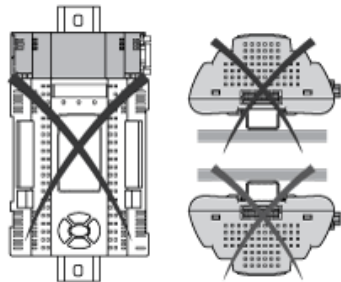


Mounting and Clearance

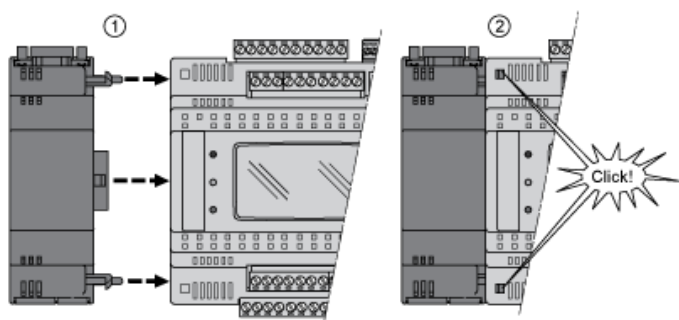
Clearance



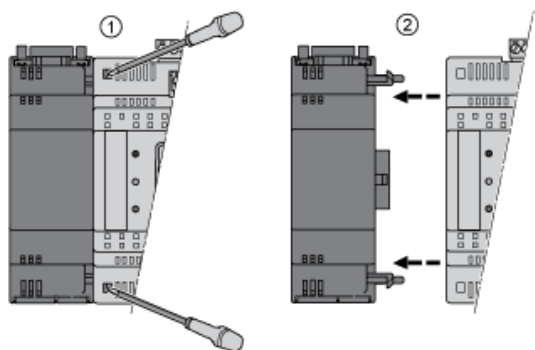
Misplacement



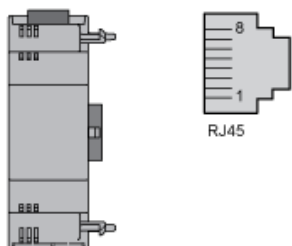
Mounting on Controller



Dismounting



Ethernet Port (ETH)



Serial Line Port (RS 485)

