



### Main

Range of product	Modicon M171
Product or component type	Controller

### Complementary

Number of port	1 Modbus serial link - RS485
Input/Output number	2 digital input(s) 4 analog input(s) 2 digital output(s) 8 (total)
Discrete input number	2
Discrete input logic	Sink or source (positive/negative)
Contacts usage	Volt-free contacts
Sensor power supply	5 V DC 12 V DC
Discrete output number	1 for open collector 1 SPST
Analogue input number	2 analog input NTC 2 analog input Pt 1000, range: 4...20 mA or 0...5 V or 0...10 V
[Us] rated supply voltage	24 V AC/DC (+/- 10 %)
Display type	Without display
Mounting support	DIN rail
Width	70.2 mm
Height	87 mm
Depth	61.6 mm

### Environment

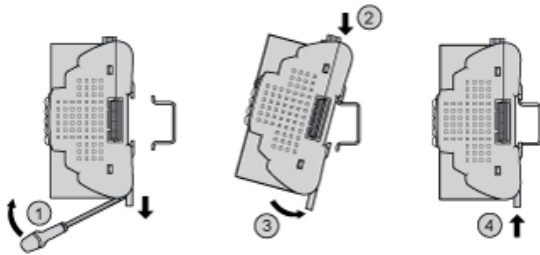
Marking	CE
Ambient air temperature for operation	-5...50 °C
IP degree of protection	IP20

Offer Sustainability

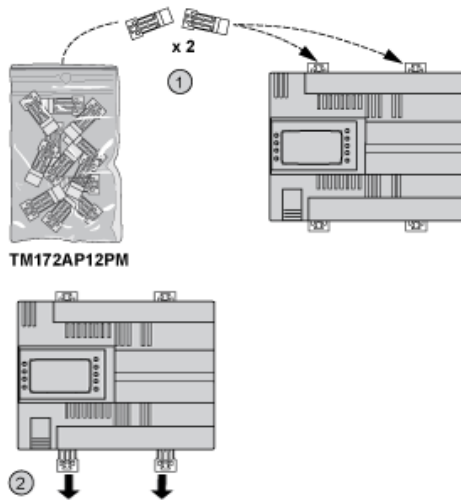
Sustainable offer status	Not Green Premium product
RoHS (date code: YYWW)	Compliant - since 1429 - Schneider Electric declaration of conformity <a href="#">Schneider Electric declaration of conformity</a>
REACH	Reference not containing SVHC above the threshold <a href="#">Reference not containing SVHC above the threshold</a>

Mounting and Clearance

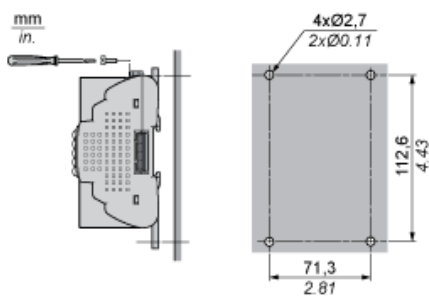
DIN Rail Mounting



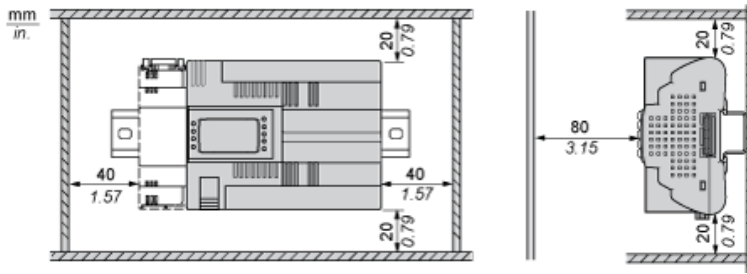
Clips for Panel Mounting



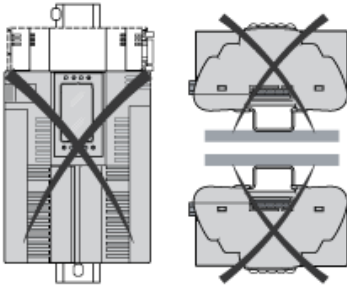
Panel Mounting



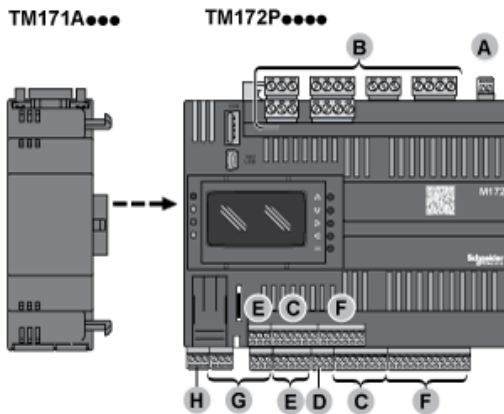
## Clearance



## Incorrect Mounting Position



## Assembling a Module



## Wiring Sections and Torque

A, C, D, E, F, G, H

$\frac{9}{0.35}$								
mm <sup>2</sup>	0.14...1.5	0.14...1.5	0.25...1.5	0.25...0.5	2 x 0.08...0.5	2 x 0.08...0.75	2 x 0.25...0.34	2 x 0.5
AWG	26...16	26...16	22...16	22...20	2 x 28...20	2 x 28...20	2 x 24...22	2 x 20

		N·m	0.22...0.25
$\varnothing 2.5 \text{ mm (0.1 in.)}$		lb·in	1.95...2.21

B

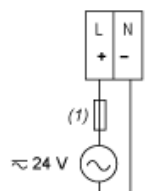
$\frac{7}{0.28}$								
mm <sup>2</sup>	0.2...2.5	0.2...2.5	0.25...2.5	0.25...2.5	2 x 0.2...1	2 x 0.2...1.5	2 x 0.25...1	2 x 0.5...1.5
AWG	24...14	24...14	22...14	22...14	2 x 24...18	2 x 24...16	2 x 22...18	2 x 20...16

		N·m	0.5...0.6
$\varnothing 3.5 \text{ mm (0.14 in.)}$		lb·in	4.42...5.31

---

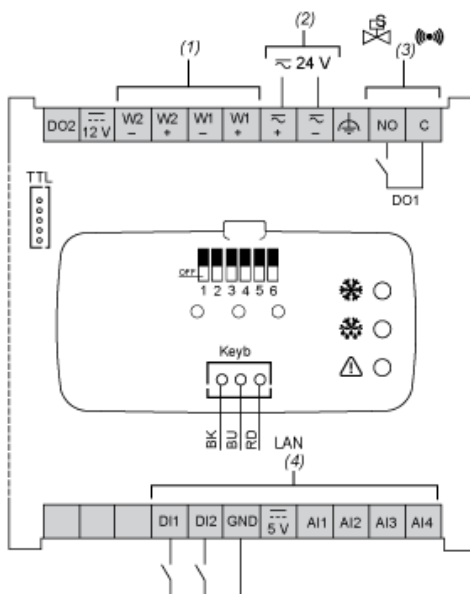
Power Supply

---



(1) Type T fuse 3,15 A

Wiring Diagram



- (1) Electronic Expansion Valve output
- (2) Power supply 24 V ac/dc
- (3) DO1: Relay output 5 A 250 Vac (Solenoid valve/Alarm)  
C: Common - NO: Normally Open
- (4) Analog inputs  
GND - Ground