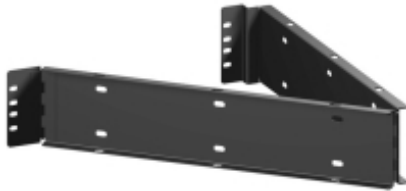


## Cable Management Arm *CGUIDE Series*

### Features

- Includes mounting hardware & tie wraps.
- Designed to fit standard EIA rails.
- Finished in textured black powder paint.



### Accessories

- Mounting Hardware



Part No.	Overall Dimensions		Usable Mounting Dimensions	
	Width	Depth	Rack Units	Height
CGUIDE	33.22	0.00	2U	3.50

*Data subject to change without notice*