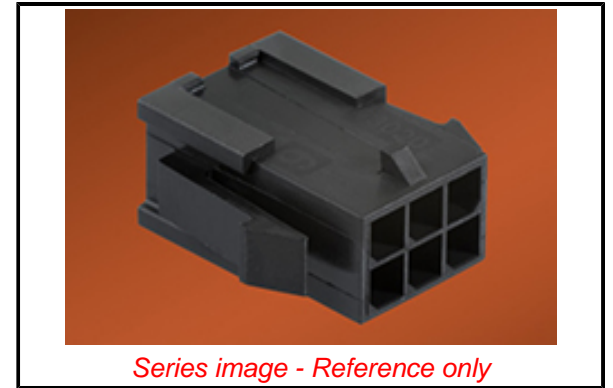


PLEASE CHECK WWW.MOLEX.COM FOR LATEST PART INFORMATION

Part Number: [0430202200](#)
Status: **Active**
Overview: [Micro-Fit 3.0™ Connectors](#)
Description: [Micro-Fit 3.0™ Plug Housing, Dual Row, 22 Circuits, UL 94V-0, Panel Mount Ears, Low-Halogen, Black](#)

Documents:

| | |
|--|--|
| 3D Model | Product Specification TS-46235-001-001 (PDF) |
| Drawing (PDF) | Packaging Specification PK-43020-001-001 (PDF) |
| Product Specification PS-43045 (PDF) | RoHS Certificate of Compliance (PDF) |
| Product Specification TS-43045-001-001 (PDF) | Product Literature (PDF) |



Agency Certification

| | |
|-----|---------|
| CSA | LR19980 |
| UL | E29179 |

General

| | |
|-----------------------------|---|
| Product Family | Crimp Housings |
| Series | 43020 |
| Application | Power, Wire-to-Wire |
| Overview | Micro-Fit 3.0™ Connectors |
| Product Literature Order No | 987650-5984 |
| Product Name | Micro-Fit 3.0™ |
| UPC | 800754319584 |

Physical

| | |
|-------------------------------|-----------------|
| Circuits (maximum) | 22 |
| Color - Resin | Black |
| Flammability | 94V-0 |
| Gender | Male |
| Glow-Wire Compliant | No |
| Keying to Mating Part | None |
| Lock to Mating Part | Yes |
| Material - Resin | Nylon |
| Net Weight | 2.393/g |
| Number of Rows | 2 |
| Packaging Type | Bag |
| Panel Mount | Yes |
| Pitch - Mating Interface | 3.00mm |
| Pitch - Termination Interface | 3.00mm |
| Polarized to Mating Part | Yes |
| Stackable | No |
| Temperature Range - Operating | -40°C to +105°C |

Solder Process Data

| | |
|-----------------------------|-----|
| Lead-freeProcess Capability | N/A |
|-----------------------------|-----|

Material Info

Reference - Drawing Numbers

| | |
|-------------------------|--|
| Packaging Specification | PK-43020-001-001 |
| Product Specification | PS-43045, TS-43045-001-001, TS-46235-001-001 |
| Sales Drawing | SDA-43020-**** |

EU ELV

Not Relevant

EU RoHS

Compliant

REACH SVHC

Not Contained Per - ED/21/2016 (20 June 2016)

Halogen-Free

Status

Not Low-Halogen

Need more information on product environmental compliance?

Email productcompliance@molex.com
Please visit the [Contact Us](#) section for any non-product compliance questions.

| | |
|-----------------|---------------|
| China ROHS | Green Image |
| ELV | Not Relevant |
| RoHS Phthalates | Not Contained |

Search Parts in this Series

[43020](#) Series

Mates With

Micro-Fit 3.0™ Receptacle Housings [43025](#)

Use With

Micro-Fit 3.0™ Male Crimp Terminals [43031](#)