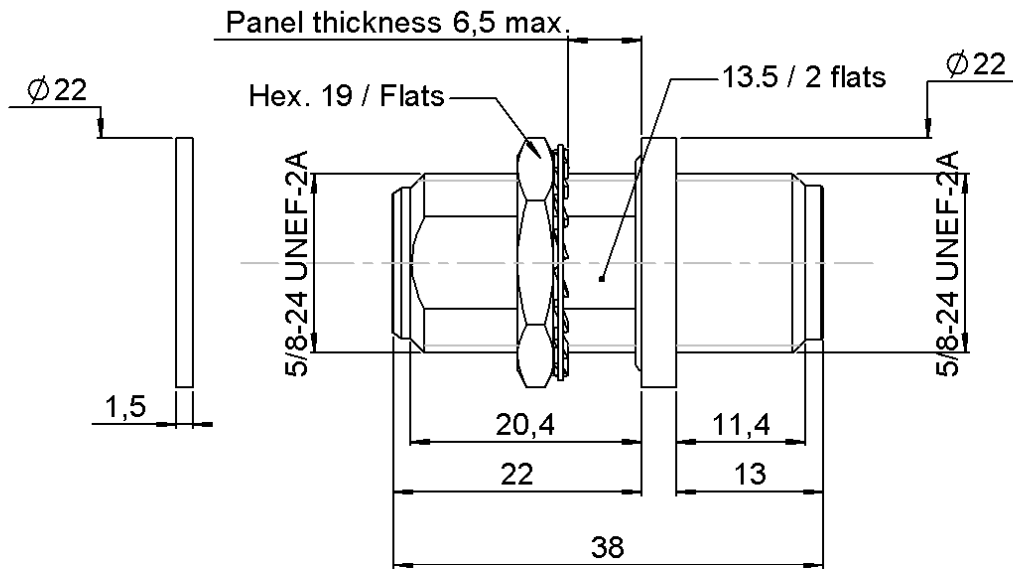


**FEMALE-FEMALE HERMETIC ADAPTOR**

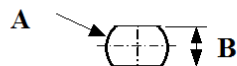
**R161.753.000**

**BULKHEAD TYPE - PANEL SEAL**

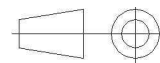
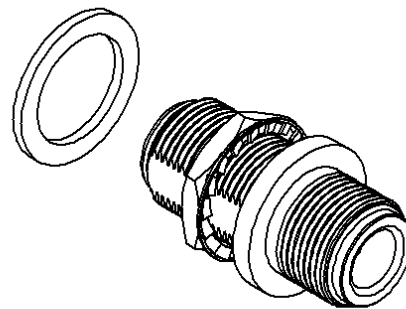
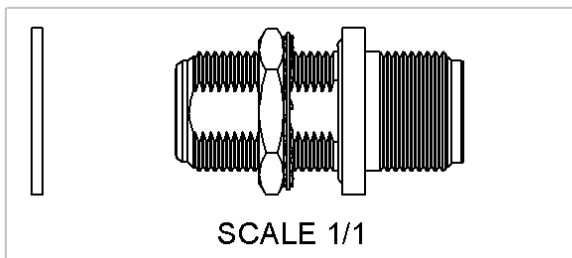
Series : N



**PANEL CUT OUT**



| mm |      |      |
|----|------|------|
|    | Maxi | mini |
| A  | 16.1 | 16   |
| B  | 13.7 | 13.6 |



All dimensions are in mm.

| COMPONENTS     | MATERIALS          | PLATING (µm)           |
|----------------|--------------------|------------------------|
| BODY           | BRASS              | BBR 2                  |
| CENTER CONTACT | BERYLLIUM COPPER   | GOLD 0.5 OVER NICKEL 2 |
| OUTER CONTACT  | BRASS              | BBR 2                  |
| INSULATOR      | PTFE+GLASS BEAD    |                        |
| GASKET         | BLACK FLUOROCARBON |                        |
| OTHERS PARTS   | BRASS              | BBR 2                  |
| -              | -                  | -                      |
| -              | -                  | -                      |

Issue : 1426 F

In the effort to improve our products, we reserve the right to make changes judged to be necessary.



**FEMALE-FEMALE HERMETIC ADAPTOR**

**R161.753.000**

**BULKHEAD TYPE - PANEL SEAL**

Series : N

**PACKAGING**

| Standard  | Unit              | Other             |
|-----------|-------------------|-------------------|
| <b>50</b> | <b>'W' option</b> | <b>Contact us</b> |

**SPECIFICATION**

**LEA COAN14HO  
N 282 Rev3**

**ELECTRICAL CHARACTERISTICS**

|                                 |                      |                          |
|---------------------------------|----------------------|--------------------------|
| Impedance                       | <b>50</b>            | $\Omega$                 |
| Frequency                       | <b>0-11</b>          | GHz                      |
| VSWR                            | <b>1.45 + 0,0000</b> | x F(GHz) Maxi            |
| Insertion loss                  | <b>0.10</b>          | $\sqrt{F}$ (GHz) dB Maxi |
| RF leakage                      | - ( <b>101</b> )     | - F(GHz)) dB Maxi        |
| Voltage rating                  | <b>1400</b>          | Veff Maxi                |
| Dielectric withstanding voltage | <b>2500</b>          | Veff mini                |
| Insulation resistance           | <b>5000</b>          | M $\Omega$ mini          |

**ENVIRONMENTAL**

|                       |                 |              |
|-----------------------|-----------------|--------------|
| Operating temperature | <b>-55/+155</b> | $^{\circ}$ C |
| Hermetic seal         | <b>10-6</b>     | Atm.cm3/s    |
| Panel leakage         | <b>IP67</b>     |              |

**OTHER CHARACTERISTICS**

Assembly instruction

Others :

**MECHANICAL CHARACTERISTICS**

|                            |                |             |
|----------------------------|----------------|-------------|
| Center contact retention   |                |             |
| Axial force – Mating end   | <b>27</b>      | N mini      |
| Axial force – Opposite end | <b>27</b>      | N mini      |
| Torque                     | <b>NA</b>      | N.cm mini   |
| Recommended torque         |                |             |
| Mating                     | <b>NA</b>      | N.cm        |
| Panel nut                  | <b>500</b>     | N.cm        |
| Mating life                | <b>500</b>     | Cycles mini |
| Weight                     | <b>47,7000</b> | g           |

Issue : 1426 F

In the effort to improve our products, we reserve the right to make changes judged to be necessary.

