



### ACCESSORIES

## DSP RELAYS PC BOARD SOCKETS



### TYPES

Product name	Part No.	
	For Single side stable	For 2 coil latching
For DSP1a	DSP1a-PS	DSP1a-PSL2
For DSP1a, DSP1, DSP2a	DSP2a-PS	DSP2a-PSL2

Standard packing: Carton: 50 pcs.; Case: 500 pcs.

### TYPES AND APPLICABLE RELAYS

Type No. Applicable relays	For DSP1a		For DSP1a, DSP1, DSP2a	
	DSP1a-PS	DSP1a-PSL2	DSP2a-PS	DSP2a-PSL2
DSP1a relays	OK	OK	OK	OK
DSP1a-L2 relays		OK		OK
DSP1 relays			OK	OK
DSP1-L2 relays				OK
DSP2a relays			OK	OK
DSP2a-L2 relays				OK

### SPECIFICATIONS

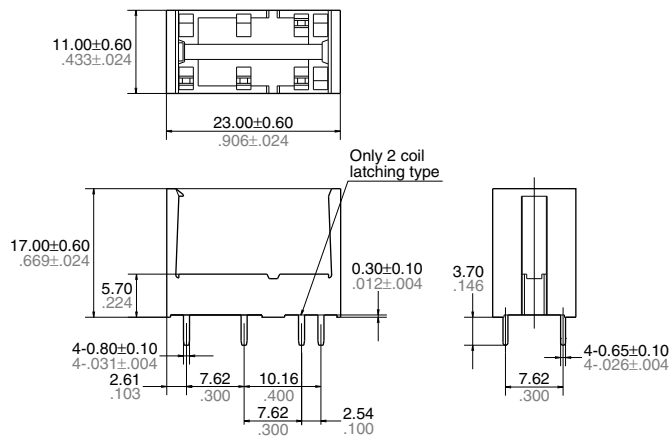
Item	Specifications
Breakdown voltage	3,000 Vrms between terminals (Except for the portion between coil terminals)
Insulation resistance	1,000 MΩ between terminals at 500 V
Heat resistance	150°C 302°F for 1 hour
Max. continuous current	8 A (DSP1a-PS and DSP1a-PSL2), 5 A (DSP2a-PS and DSP2a-PSL2)

### DIMENSIONS (mm inch)

The CAD data of the products with a **CAD Data** mark can be downloaded from: <http://industrial.panasonic.com/ac/e/>

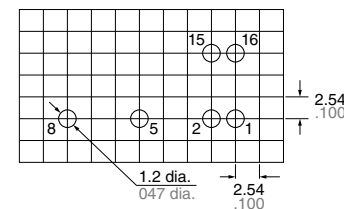
#### CAD Data

#### External dimensions

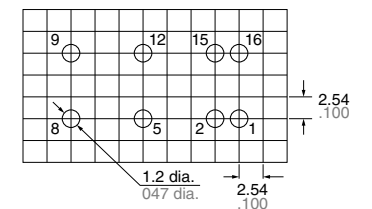


#### PC board pattern (Bottom view)

#### DSP1a-PS, DSP1a-PSL2



#### DSP2a-PS, DSP2a-PSL2

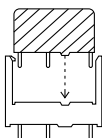


Note: Terminal No.2 and 15 are for DSP1a-PSL2 only.

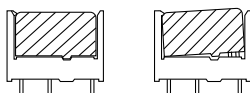
Note: Terminal No.2 and 15 are for DSP2a-PSL2 only.

### FIXING AND REMOVAL METHOD

1. Match the direction of relay and socket.



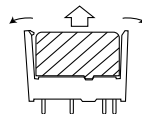
2. Both ends of relays are fixed so tightly that the socket hooks on the top surface of relays.



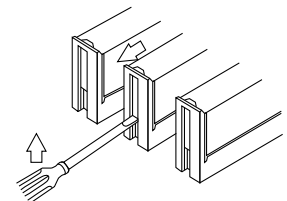
Good

No good

3. Remove the relay, applying force in the direction shown below.



4. In case there is not enough space for finger to pick relay up, use screw drivers in the way shown below.



Notes: 1. Exercise care when removing relays. If greater than necessary force is applied at the socket hooks, deformation may alter the dimensions so that the hook will no longer catch, and other damage may also occur.  
2. It is hazardous to use IC chip sockets.