



N-Channel 30-V (D-S) MOSFET

PRODUCT SUMMARY

V_{DS} (V)	$R_{DS(on)}$ (Ω)	I_D (A) ^{d, e}	Q_g (Typ.)
30	0.041 at $V_{GS} = 10$ V	6	2.8 nC
	0.051 at $V_{GS} = 4.5$ V	6	

FEATURES

- Halogen-free According to IEC 61249-2-21 Definition
- TrenchFET® Power MOSFET
- 100 % R_g Tested
- Compliant to RoHS Directive 2002/95/EC

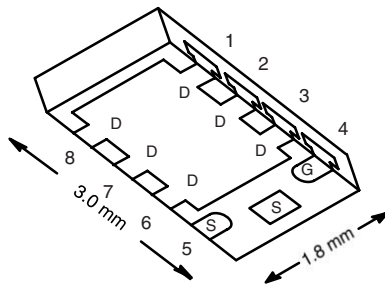


RoHS
COMPLIANT
HALOGEN
FREE

APPLICATIONS

- Load Switch
- HDD DC/DC

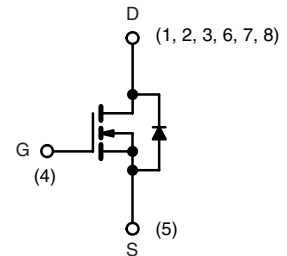
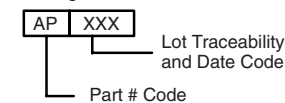
PowerPAK® ChipFET Single



Bottom View

Ordering Information: Si5458DU-T1-GE3 (Lead (Pb)-free and Halogen-free)

Marking Code



N-Channel MOSFET

ABSOLUTE MAXIMUM RATINGS $T_A = 25^\circ\text{C}$, unless otherwise noted

Parameter	Symbol	Limit	Unit
Drain-Source Voltage	V_{DS}	30	V
Gate-Source Voltage	V_{GS}	± 20	
Continuous Drain Current ($T_J = 150^\circ\text{C}$)	$T_C = 25^\circ\text{C}$	6^e	A
	$T_C = 70^\circ\text{C}$	6^e	
	$T_A = 25^\circ\text{C}$	$6^{a, b, e}$	
	$T_A = 70^\circ\text{C}$	$6^{a, b, e}$	
Pulsed Drain Current	I_{DM}	20	A
Continuous Source-Drain Diode Current	$T_C = 25^\circ\text{C}$	6	
	$T_A = 25^\circ\text{C}$	$2.9^{a, b}$	
Maximum Power Dissipation	$T_C = 25^\circ\text{C}$	10.4	W
	$T_C = 70^\circ\text{C}$	6.7	
	$T_A = 25^\circ\text{C}$	$3.5^{a, b}$	
	$T_A = 70^\circ\text{C}$	$2.2^{a, b}$	
Operating Junction and Storage Temperature Range	T_J, T_{stg}	-55 to 150	$^\circ\text{C}$
Soldering Recommendations (Peak Temperature) ^{f, g}		260	

THERMAL RESISTANCE RATINGS

Parameter	Symbol	Typical	Maximum	Unit
Maximum Junction-to-Ambient ^{a, c}	R_{thJA}	30	36	$^\circ\text{C/W}$
Maximum Junction-to-Case (Drain)	R_{thJC}	10	12	

Notes:

a. Surface Mounted on 1" x 1" FR4 board.

b. $t = 5$ s.

c. Maximum under steady state conditions is 72°C/W .

d. Based on $T_C = 25^\circ\text{C}$.

e. Package limited.

f. See Solder Profile (www.vishay.com/ppg?73257). The PowerPAK ChipFET is a leadless package. The end of the lead terminal is exposed copper (not plated) as a result of the singulation process in manufacturing. A solder fillet at the exposed copper tip cannot be guaranteed and is not required to ensure adequate bottom side solder interconnection.

g. Rework Conditions: manual soldering with a soldering iron is not recommended for leadless components.

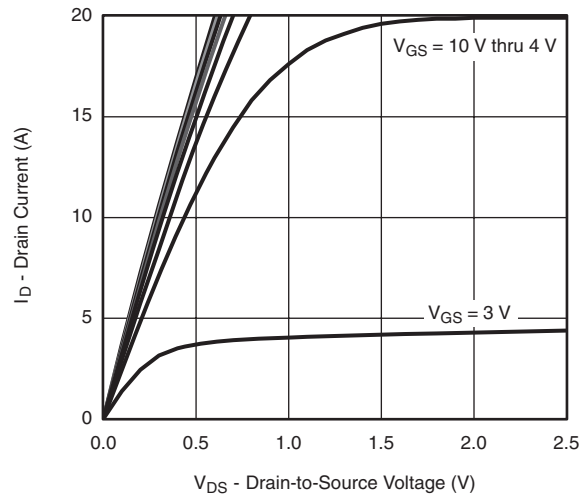
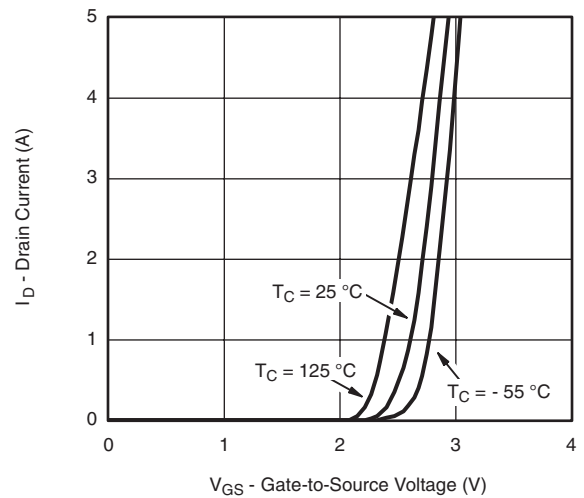
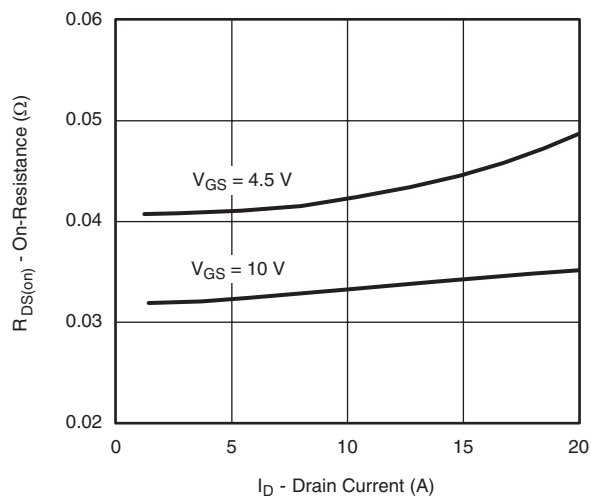
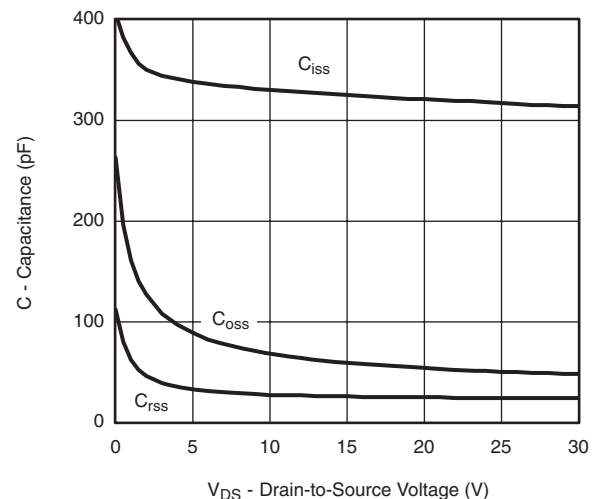
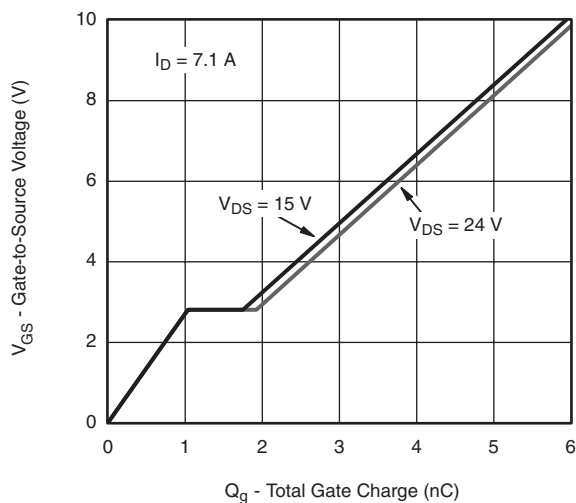
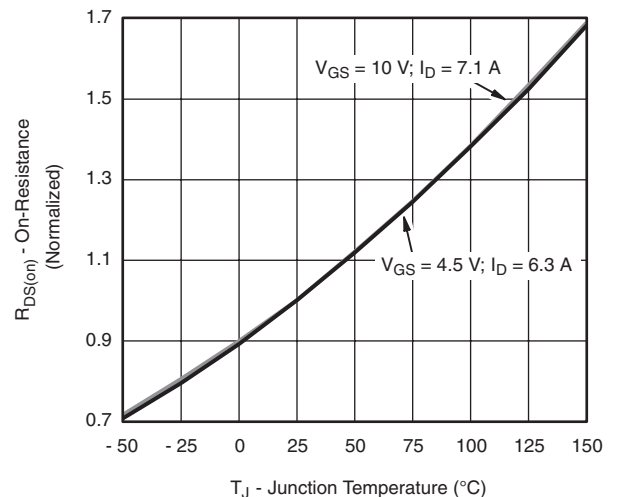
SPECIFICATIONS T _J = 25 °C, unless otherwise noted						
Parameter	Symbol	Test Conditions	Min.	Typ.	Max.	Unit
Static						
Drain-Source Breakdown Voltage	V _{DS}	V _{GS} = 0 V, I _D = 250 μA	30			V
V _{DS} Temperature Coefficient	ΔV _{DS} /T _J	I _D = 250 μA		32		mV/°C
V _{GS(th)} Temperature Coefficient	ΔV _{GS(th)} /T _J			- 5		
Gate-Source Threshold Voltage	V _{GS(th)}	V _{DS} = V _{GS} , I _D = 250 μA	1.2		3	V
Gate-Source Leakage	I _{GSS}	V _{DS} = 0 V, V _{GS} = ± 20 V			± 100	nA
Zero Gate Voltage Drain Current	I _{DSS}	V _{DS} = 30 V, V _{GS} = 0 V			1	μA
		V _{DS} = 30 V, V _{GS} = 0 V, T _J = 70 °C			10	
On-State Drain Current ^a	I _{D(on)}	V _{DS} ≥ 5 V, V _{GS} = 10 V	15			A
Drain-Source On-State Resistance ^a	R _{DS(on)}	V _{GS} = 10 V, I _D = 7.1 A		0.034	0.041	Ω
		V _{GS} = 4.5 V, I _D = 6.3 A		0.042	0.051	
Forward Transconductance ^a	g _{fs}	V _{DS} = 15 V, I _D = 7.1 A		15		S
Dynamic ^b						
Input Capacitance	C _{iss}	V _{DS} = 15 V, V _{GS} = 0 V, f = 1 MHz		325		pF
Output Capacitance	C _{oss}			60		
Reverse Transfer Capacitance	C _{rss}			30		
Total Gate Charge	Q _g	V _{DS} = 15 V, V _{GS} = 10 V, I _D = 7.1 A		6	9	nC
		V _{DS} = 15 V, V _{GS} = 4.5 V, I _D = 7.1 A		2.8	4.2	
Gate-Source Charge	Q _{gs}			1.1		
Gate-Drain Charge	Q _{gd}			0.8		
Gate Resistance	R _g	f = 1 MHz	0.6	2.8	5.6	Ω
Turn-On Delay Time	t _{d(on)}	V _{DD} = 15 V, R _L = 2.7 Ω I _D ≅ 5.6 A, V _{GEN} = 4.5 V, R _g = 1 Ω		12	18	ns
Rise Time	t _r			13	20	
Turn-Off Delay Time	t _{d(off)}			16	25	
Fall Time	t _f			11	17	
Turn-On Delay Time	t _{d(on)}	V _{DD} = 15 V, R _L = 2.7 Ω I _D ≅ 5.6 A, V _{GEN} = 10 V, R _g = 1 Ω		4	8	
Rise Time	t _r			9	18	
Turn-Off Delay Time	t _{d(off)}			11	20	
Fall Time	t _f			8	15	
Drain-Source Body Diode Characteristics						
Continuous Source-Drain Diode Current	I _S	T _C = 25 °C			1.2	A
Pulse Diode Forward Current	I _{SM}				20	
Body Diode Voltage	V _{SD}	I _S = 5.6 A, V _{GS} = 0 V		0.8	1.2	V
Body Diode Reverse Recovery Time	t _{rr}	I _F = 5.6 A, dI/dt = 100 A/μs, T _J = 25 °C		11	20	ns
Body Diode Reverse Recovery Charge	Q _{rr}			4	8	nC
Reverse Recovery Fall Time	t _a			6		ns
Reverse Recovery Rise Time	t _b			5		

Notes:

a. Pulse test; pulse width $\leq 300\text{ }\mu\text{s}$, duty cycle $\leq 2\%$.

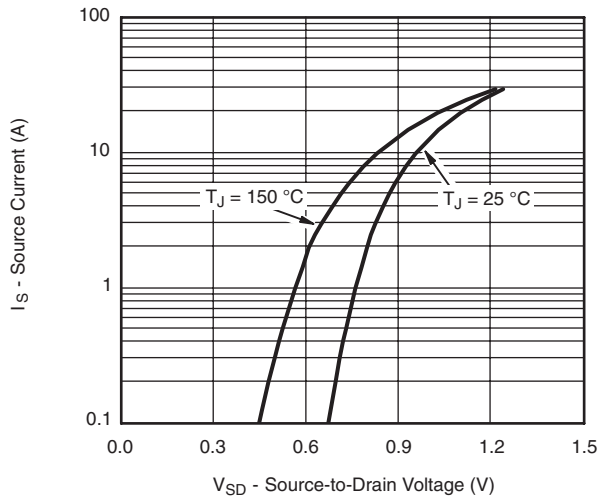
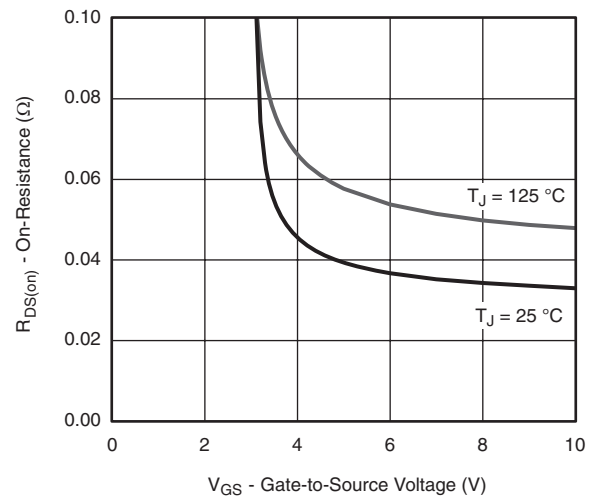
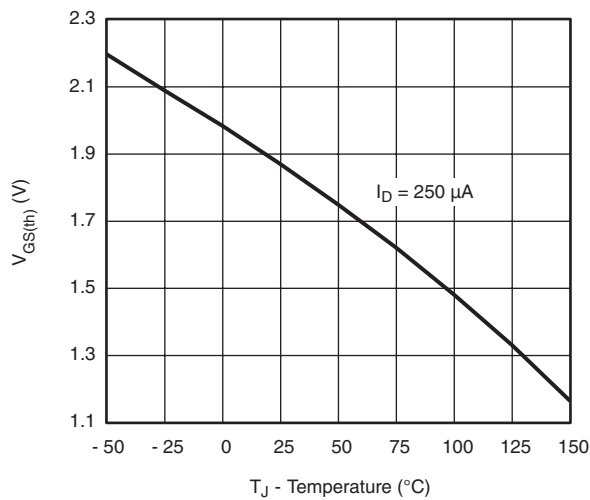
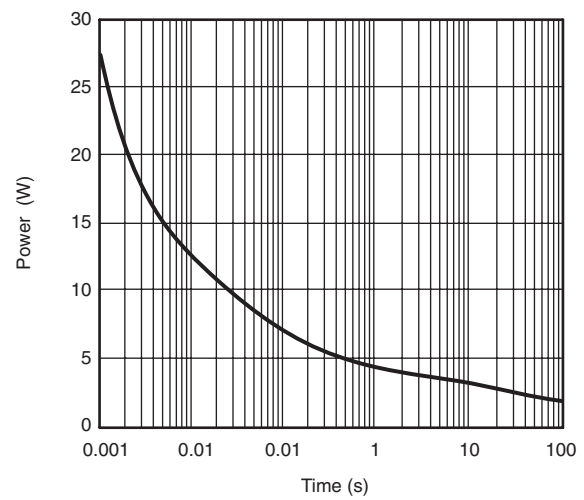
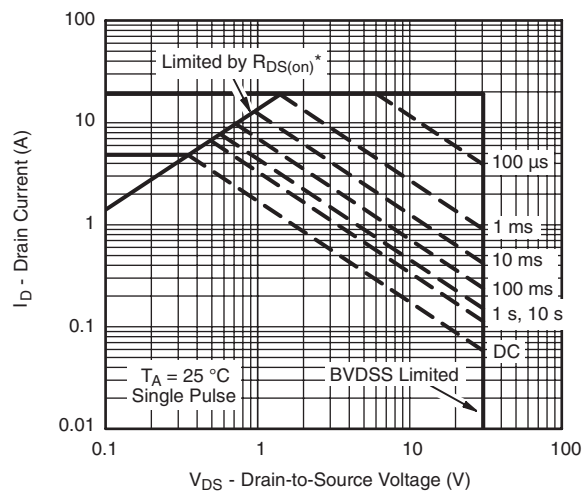
b. Guaranteed by design, not subject to production testing.

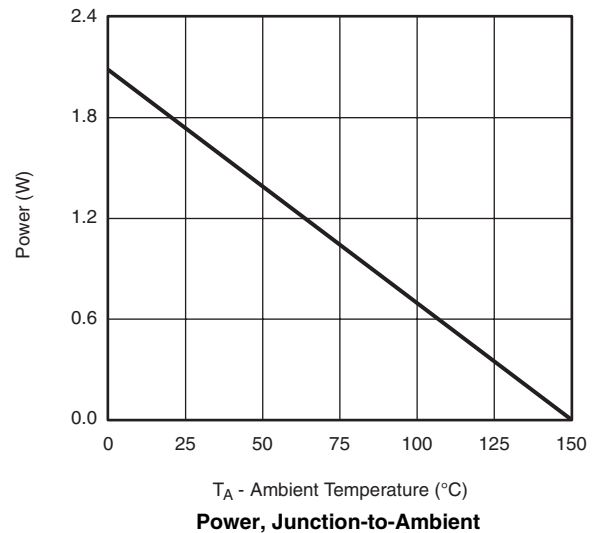
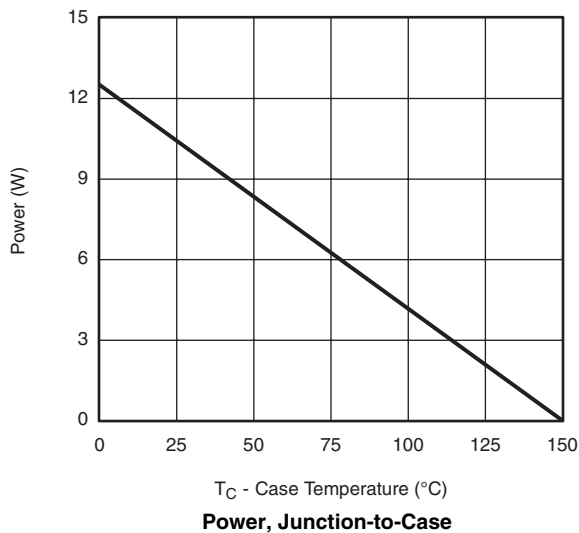
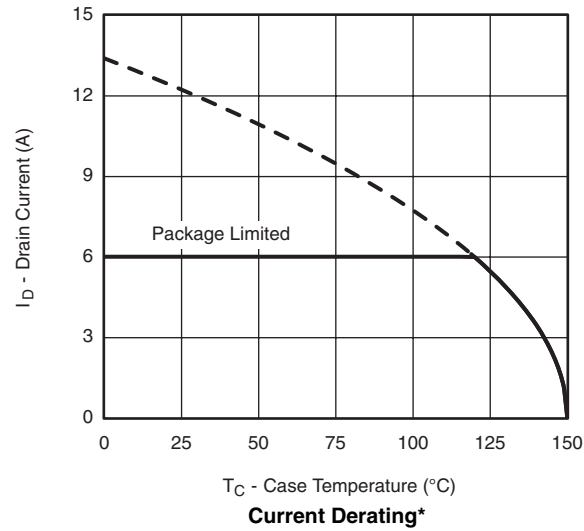
Stresses beyond those listed under "Absolute Maximum Ratings" may cause permanent damage to the device. These are stress ratings only, and functional operation of the device at these or any other conditions beyond those indicated in the operational sections of the specifications is not implied. Exposure to absolute maximum rating conditions for extended periods may affect device reliability.


TYPICAL CHARACTERISTICS 25 °C, unless otherwise noted

Output Characteristics

Transfer Characteristics

On-Resistance vs. Drain Current

Capacitance

Gate Charge

On-Resistance vs. Junction Temperature

Si5458DU

Vishay Siliconix

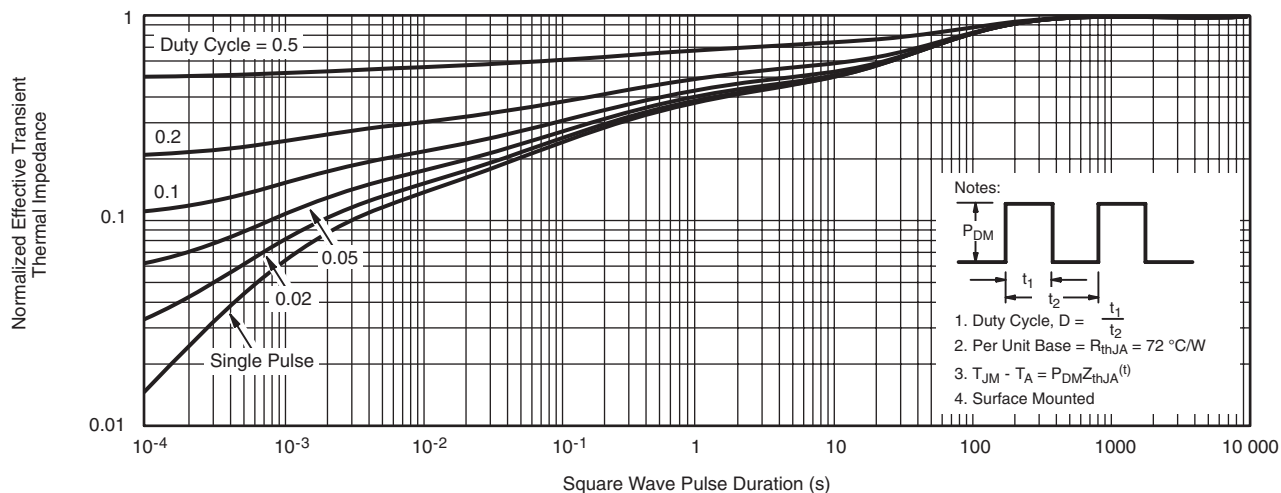
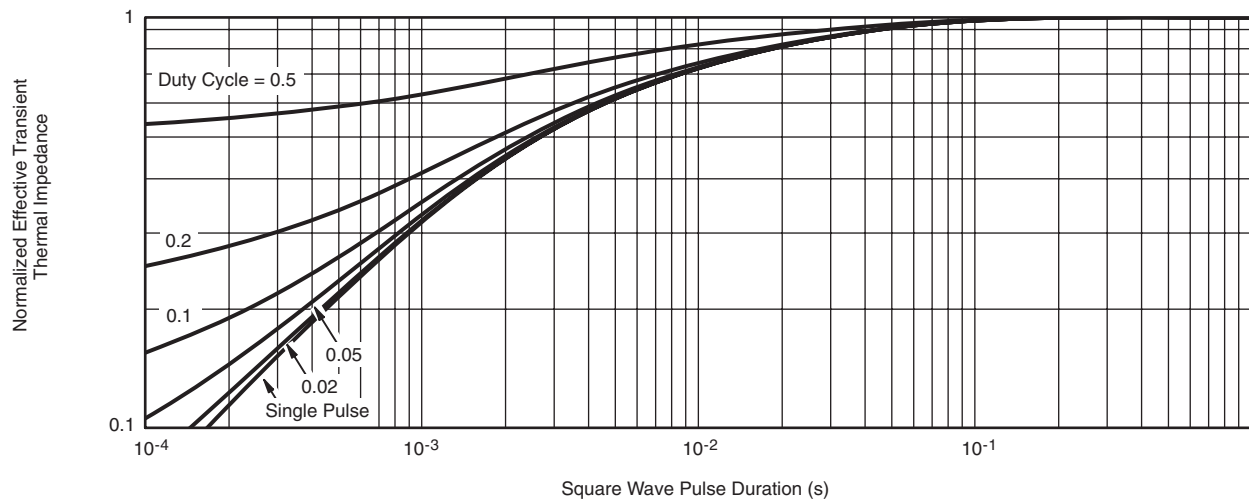
**TYPICAL CHARACTERISTICS** 25 °C, unless otherwise noted**Source-Drain Diode Forward Voltage****On-Resistance vs. Gate-to-Source Voltage****Threshold Voltage****Single Pulse Power*** $V_{GS} >$ minimum V_{GS} at which $R_{DS(on)}$ is specified**Safe Operating Area, Junction-to-Ambient**


TYPICAL CHARACTERISTICS 25 °C, unless otherwise noted


* The power dissipation P_D is based on $T_{J(max)} = 150$ °C, using junction-to-case thermal resistance, and is more useful in settling the upper dissipation limit for cases where additional heatsinking is used. It is used to determine the current rating, when this rating falls below the package limit.

Si5458DU

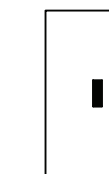
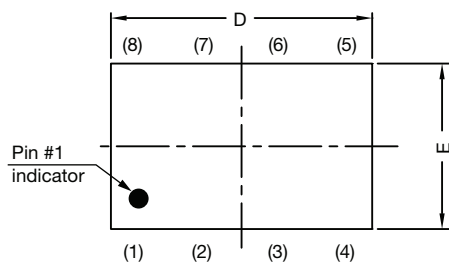
Vishay Siliconix

**TYPICAL CHARACTERISTICS** 25 °C, unless otherwise noted**Normalized Thermal Transient Impedance, Junction-to-Ambient****Normalized Thermal Transient Impedance, Junction-to-Case**

Vishay Siliconix maintains worldwide manufacturing capability. Products may be manufactured at one of several qualified locations. Reliability data for Silicon Technology and Package Reliability represent a composite of all qualified locations. For related documents such as package/tape drawings, part marking, and reliability data, see www.vishay.com/ppg?65019.



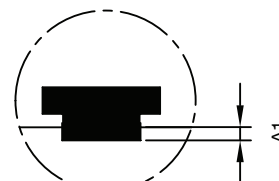
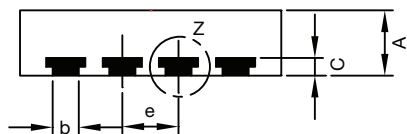
PowerPAK® ChipFET® Case Outline



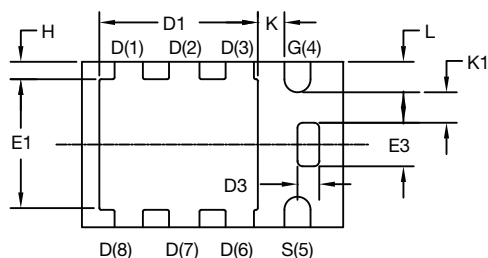
Side view of single



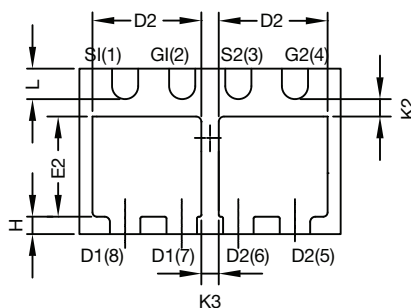
Side view of dual



Detail Z



Backside view of single pad



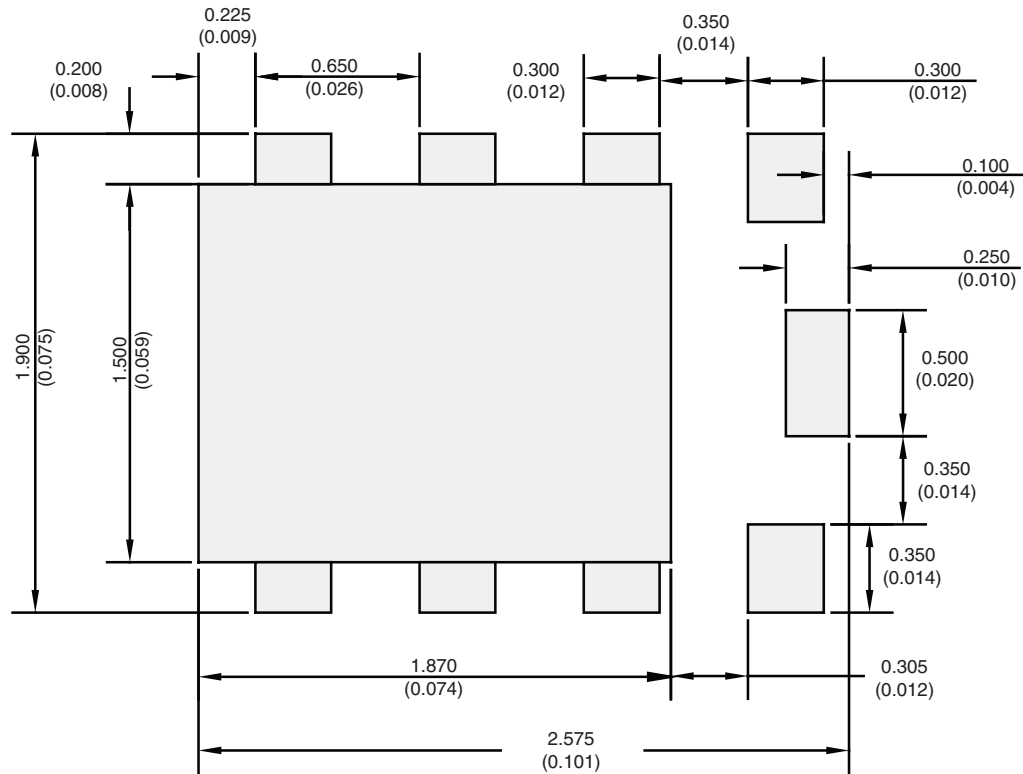
Backside view of dual pad

DIM.	MILLIMETERS			INCHES		
	MIN.	NOM.	MAX.	MIN.	NOM.	MAX.
A	0.70	0.75	0.85	0.028	0.030	0.033
A1	0	-	0.05	0	-	0.002
b	0.25	0.30	0.35	0.010	0.012	0.014
C	0.15	0.20	0.25	0.006	0.008	0.010
D	2.92	3.00	3.08	0.115	0.118	0.121
D1	1.75	1.87	2.00	0.069	0.074	0.079
D2	1.07	1.20	1.32	0.042	0.047	0.052
D3	0.20	0.25	0.30	0.008	0.010	0.012
E	1.82	1.90	1.98	0.072	0.075	0.078
E1	1.38	1.50	1.63	0.054	0.059	0.064
E2	0.92	1.05	1.17	0.036	0.041	0.046
E3	0.45	0.50	0.55	0.018	0.020	0.022
e	0.65 BSC			0.026 BSC		
H	0.15	0.20	0.25	0.006	0.008	0.010
K	0.25	-	-	0.010	-	-
K1	0.30	-	-	0.012	-	-
K2	0.20	-	-	0.008	-	-
K3	0.20	-	-	0.008	-	-
L	0.30	0.35	0.40	0.012	0.014	0.016
C14-0630-Rev. E, 21-Jul-14						
DWG: 5940						

Note

- Millimeters will govern

RECOMMENDED MINIMUM PADS FOR PowerPAK® ChipFET® Single



Recommended Minimum Pads
Dimensions in mm/(Inches)

[Return to Index](#)



Disclaimer

ALL PRODUCT, PRODUCT SPECIFICATIONS AND DATA ARE SUBJECT TO CHANGE WITHOUT NOTICE TO IMPROVE RELIABILITY, FUNCTION OR DESIGN OR OTHERWISE.

Vishay Intertechnology, Inc., its affiliates, agents, and employees, and all persons acting on its or their behalf (collectively, "Vishay"), disclaim any and all liability for any errors, inaccuracies or incompleteness contained in any datasheet or in any other disclosure relating to any product.

Vishay makes no warranty, representation or guarantee regarding the suitability of the products for any particular purpose or the continuing production of any product. To the maximum extent permitted by applicable law, Vishay disclaims (i) any and all liability arising out of the application or use of any product, (ii) any and all liability, including without limitation special, consequential or incidental damages, and (iii) any and all implied warranties, including warranties of fitness for particular purpose, non-infringement and merchantability.

Statements regarding the suitability of products for certain types of applications are based on Vishay's knowledge of typical requirements that are often placed on Vishay products in generic applications. Such statements are not binding statements about the suitability of products for a particular application. It is the customer's responsibility to validate that a particular product with the properties described in the product specification is suitable for use in a particular application. Parameters provided in datasheets and / or specifications may vary in different applications and performance may vary over time. All operating parameters, including typical parameters, must be validated for each customer application by the customer's technical experts. Product specifications do not expand or otherwise modify Vishay's terms and conditions of purchase, including but not limited to the warranty expressed therein.

Except as expressly indicated in writing, Vishay products are not designed for use in medical, life-saving, or life-sustaining applications or for any other application in which the failure of the Vishay product could result in personal injury or death. Customers using or selling Vishay products not expressly indicated for use in such applications do so at their own risk. Please contact authorized Vishay personnel to obtain written terms and conditions regarding products designed for such applications.

No license, express or implied, by estoppel or otherwise, to any intellectual property rights is granted by this document or by any conduct of Vishay. Product names and markings noted herein may be trademarks of their respective owners.