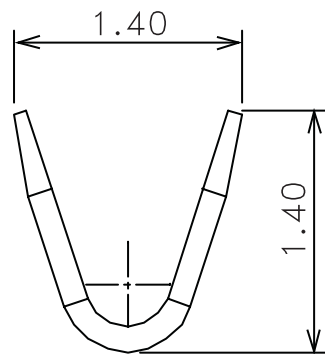
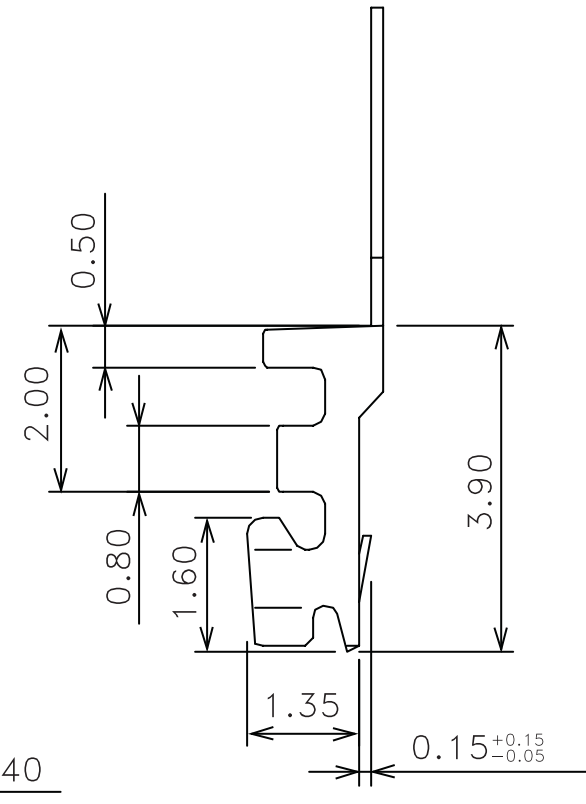
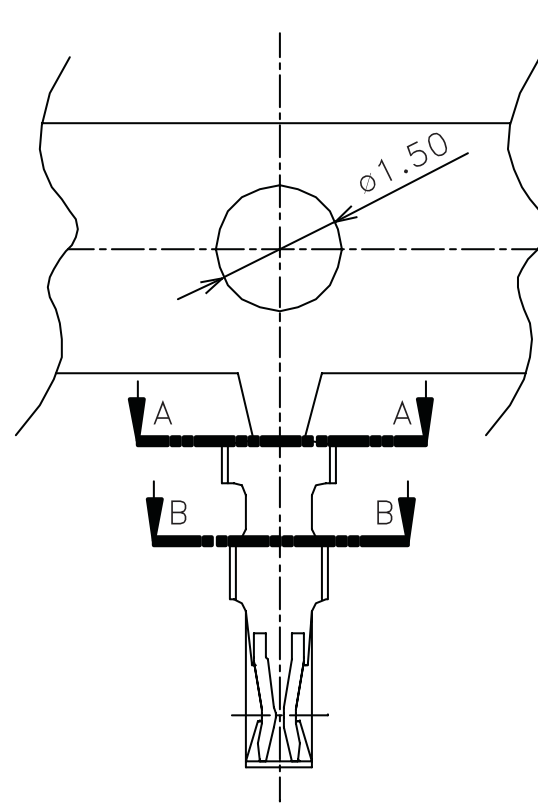


SECTION B-B



SECTION A-A



NOTE:

1. MATERIAL: HIGH PERFORMANCE COPPER ALLOY, T=0.10mm
2. PLATING: TIN OVERALL
3. WIRE RANGE SUITABLE FOR AWG#28~#32
4. STANDARD PACKAGE: 15000 PCS/ROLL

ORDER CODE
M40-1000006

1	220202	-
ISS.	DATE	C/N
APPROVED: TED T		
CHECKED: MIKE M		
DRAWN:		
CUSTOMER REF:		
ASSEMBLY DRG:		



THIS INFORMATION AND ANY INFORMATION OR DESCRIPTIVE MATTER SET OUT HEREON ARE CONFIDENTIAL AND COPYRIGHT PROPERTY OF THE HARWIN GROUP AND MUST NOT BE DISCLOSED, LOANED, COPIED OR USED FOR MANUFACTURING, TENDERING OR FOR ANY OTHER PURPOSE WITHOUT THEIR WRITTEN PERMISSION.

TOLERANCES

X = ±1mm
XX = ±0.25mm
XXX = ±0.10mm
XXXX = ±0.01mm
ANGLES = °
UNLESS STATED

MATERIAL:

SEE ABOVE

FINISH: SEE ABOVE

S/AREA: mm²

TITLE:

TERMINAL FOR CABLE TO
BOARD P=1.00mm TYPE

DRAWING NUMBER:

M40-1000006

HARWIN INC
U.S.A.
TEL: (812)542 2546
FAX: (812)542 2541

HARWIN PLC
U.K.
TEL: 023 9237 0451
FAX: 023 9231 4590

HARWIN PTE LTD
SINGAPORE
TEL: 65 6779 4909
FAX: 65 6779 3868

SHT
1
OF
1