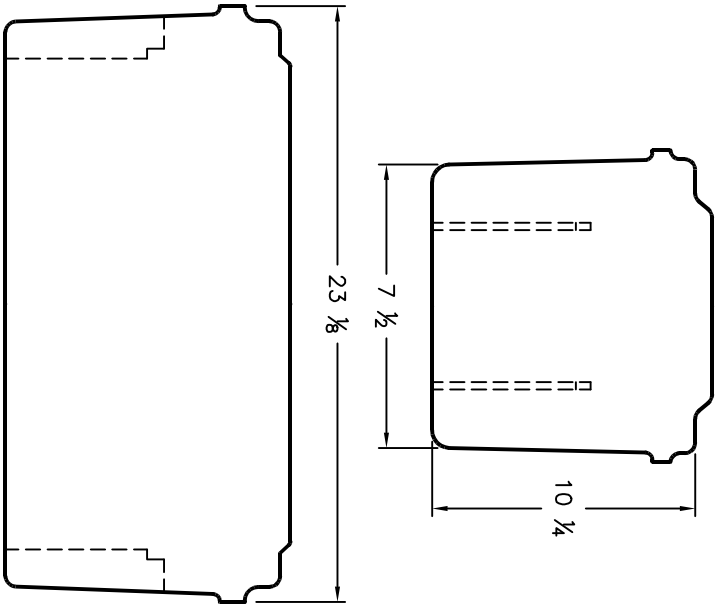


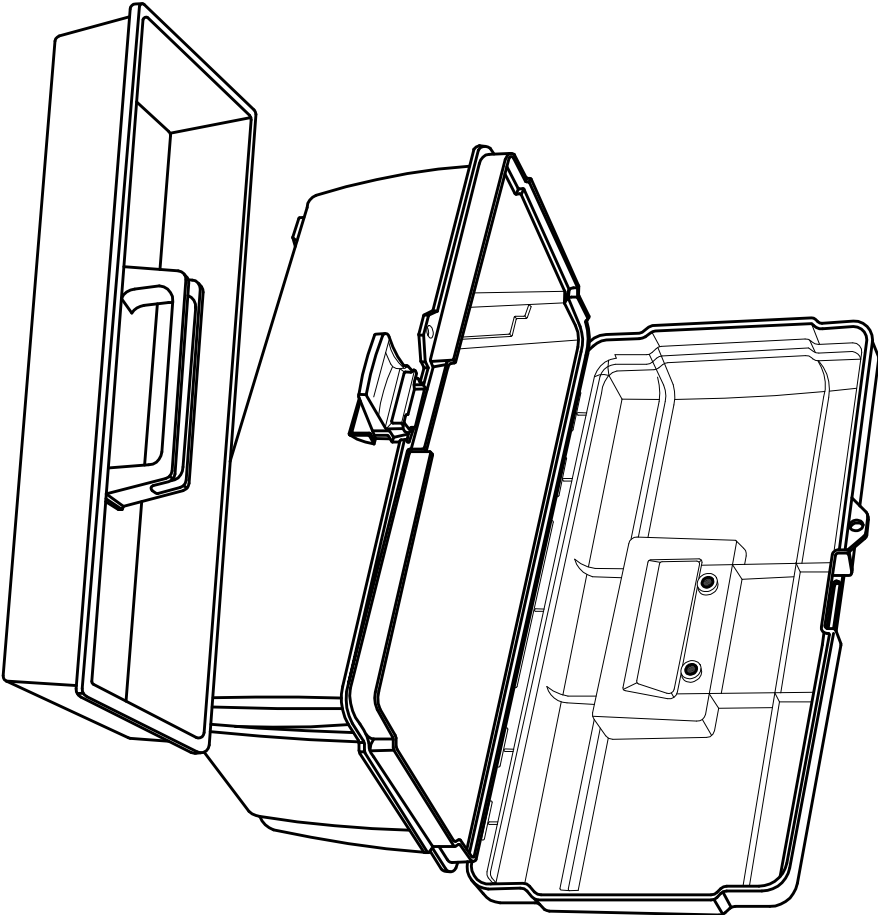
ALL RIGHTS RESERVED. NO PORTION OF THIS PUBLICATION, WHETHER IN WHOLE OR IN PART CAN BE REPRODUCED WITHOUT THE EXPRESS WRITTEN CONSENT OF SPC TECHNOLOGY.

REVISIONS					DOC. NO. SPC-F005 * Effective: 12/21/98 * DCP No: 680			
DCP #	REV	DESCRIPTION	DRAWN	DATE	CHECKD	DATE	APPRVD	DATE
	A	RELEASED	J.C.	2/6/92				
1090	B	REDRAWN & UPDATED	HYO	10/11/01	J.C.	10/16/01	J.C.	10/16/01



SPECIFICATIONS:

1. Material: lightweight co-polymer polypropylene resin, Gray
2. Non-conductive
3. Rustproof and scratch resistant
4. Brass hinge and latch pins
5. Tough recessed handle
6. Resistant to oil and most common chemicals
7. Positive action latches
8. Tongue and groove construction



Try Size: 20 5/8 X 7 1/2 X 2

DISCLAIMER:
ALL STATEMENTS AND TECHNICAL INFORMATION CONTAINED HEREIN ARE BASED UPON INFORMATION AND/OR TESTS WE BELIEVE TO BE ACCURATE AND RELIABLE. SINCE CONDITIONS OF USE ARE BEYOND OUR CONTROL, THE USER SHALL DETERMINE THE SUITABILITY OF THE PRODUCT FOR THE INTENDED USE AND ASSUME ALL RISK AND LIABILITY WHATSOEVER IN CONNECTION THEREWITH.

UNLESS OTHERWISE SPECIFIED, DIMENSIONS ARE FOR REFERENCE PURPOSES ONLY.

DRAWING TITLE:				DRAWING TITLE:			
UTILITY BOX WITH LIFT-OUT TRAY				UTILITY BOX WITH LIFT-OUT TRAY			
DRAWN BY:				DRAWN BY:			
J.C.				J.C.			
DATE:				DATE:			
2/6/92				2/6/92			
CHECKED BY:				CHECKED BY:			
DATE:				DATE:			
APPROVED BY:				APPROVED BY:			
DATE:				DATE:			
SIZE				SIZE			
A				A			
DWG. NO.				DWG. NO.			
TC-308-2				TC-308-2			
ELECTRONIC FILE				ELECTRONIC FILE			
84N1451.DWG				84N1451.DWG			
REV				REV			
B				B			
SCALE: NTS				SCALE: NTS			
U.O.M.: INCHES				U.O.M.: INCHES			
SHEET: 1 OF 1				SHEET: 1 OF 1			

