

Change Notice

M2100 Series

Change to Yellow LED Specifications for M2100 Toggles & Rockers

Type of Change:

- Engineering Part Number
 Product Appearance

The M2100 Toggles and Rockers will have changes to the specifications for Yellow (E) LEDs. The changes will effect all of the switches, both standard and custom. The specification revisions are outlined below, followed by effected standard part numbers.



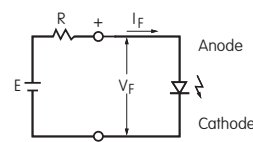
M2100 Series

LED COLOR & SPECIFICATIONS

The electrical specifications shown are determined at a basic temperature of 25°C. The LED is an integral part of the switch and is not available separately.		Before Change	After Change
Color		Yellow E	Yellow E
Maximum Forward Current	I_{FM}	30mA	30mA
Typical Forward Current	I_F	20mA	20mA
Forward Voltage	V_F	2.1V	2.1V
Maximum Reverse Voltage	V_{RM}	4V	4V
Current Reduction Rate Above 25°C	ΔI_F	0.40 mA/°C	0.38 mA/°C
Ambient Temperature Range		-10 ~ +55 °C	-10 ~ +55 °C

Notes

- In OFF state, the lens color has a different appearance after the change.
- The LED circuit is isolated and requires an external power source.
- If the source voltage exceeds the rated voltage, a ballast resistor is required. The resistor value can be calculated by using the formula shown here.
- The changes to LED specifications do not effect any external dimensions of the switches.
- Contact the factory if further details are needed.



$$R = \frac{E - V_F}{I_F}$$

Where: R = Resistor Value (Ohms)
 E = Source Voltage (V)
 V_F = Forward Voltage (V)
 I_F = Forward Current (A)

M2100 TOGGLES EFFECTED BY REVISIONS

M2112LEW01/M	M2112LEW02/M	M2112LEW03/M	M2112LEW01	M2112LEW02	M2112LEW03	M2112LEG30
M2112TEW01/M	M2112TEW02/M	M2112TEW03/M	M2112TEW01	M2112TEW02	M2112TEW03	M2112TEG30
M2113LEW01/M	M2113LEW02/M	M2113LEW03/M	M2113LEW01	M2113LEW02	M2113LEW03	M2113LEG30
M2113TEW01/M	M2113TEW02/M	M2113TEW03/M	M2113TEW01	M2113TEW02	M2113TEW03	M2113TEG30

M2100 ROCKERS EFFECTED BY REVISIONS

M2112NEW01	M2112NEW02	M2112NEW03	M2112NEW13	M2112NEG30
M2112REW01	M2112REW02	M2112REW03	M2112REW13	M2112REG30
M2113NEW01	M2113NEW02	M2113NEW03	M2113NEW13	M2113NEG30
M2113REW01	M2113REW02	M2113REW03	M2113REW13	M2113REG30

Effective Date

Changes to Yellow (E) LED for M2100 Series will be effective March 2017.

NKK
SWITCHES

<http://www.nkkswitches.com> • 1.877.2BUYNKK (228.9655)

7850 East Gelding Drive • Scottsdale, AZ 85260 • Telephone 480.991.0942 • Fax 480.998.1435