

**PLEASE CHECK WWW.MOLEX.COM FOR LATEST PART INFORMATION**

**Part Number:** [0015976081](#)  
**Status:** **Active**  
**Overview:** Mini-Fit® TPA2 Plugs and Receptacles  
**Description:** Mini-Fit® TPA Plug Housing, 4.20mm Pitch, Dual Row with Secondary Terminal Retention, 8 Circuits

**Documents:**

[3D Model](#) [Product Specification PS-5556-003 \(PDF\)](#)  
[Drawing \(PDF\)](#) [RoHS Certificate of Compliance \(PDF\)](#)  
[Product Specification PS-45750-001-001 \(PDF\)](#)

**Agency Certification**

CSA LR19980  
 UL E29179

**General**

Product Family Crimp Housings  
 Series [30068](#)  
 Application Power, Wire-to-Wire  
 Comments Current = 13A max. per circuit when header is mated to a receptacle loaded with [45750](#) series terminals crimped to 16 AWG wire. . See Molex product specification PS-45750-001 for additional current derating information.

Overview [Mini-Fit® TPA2 Plugs and Receptacles](#)  
 Product Name Mini-Fit® TPA  
 UPC 800754202435

**Physical**

Circuits (maximum) 8  
 Color - Resin Black  
 Flammability 94V-0  
 Gender Male  
 Glow-Wire Compliant No  
 Material - Resin Polyester  
 Net Weight 3.627/g  
 Number of Rows 2  
 Packaging Type Bag  
 Panel Mount No, Yes  
 Pitch - Mating Interface 4.20mm  
 Stackable No  
 Temperature Range - Operating -40°C to +105°C

**Electrical**

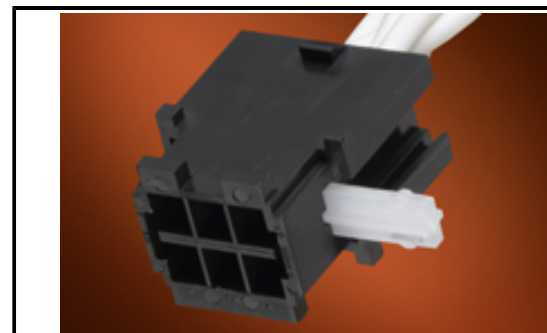
Current - Maximum per Contact 13.0A

**Material Info**

Engineering Number 30068-08

**Reference - Drawing Numbers**

Product Specification PS-45750-001-001, PS-5556-003  
 Sales Drawing SD-30068-\*



*Series image - Reference only*

**EU ELV**

**Not Relevant**

**EU RoHS**

**Compliant**

**REACH SVHC**

Not Contained Per -ED/01/2017 (12 January 2017)

**Halogen-Free**

**Status**

**Not Low-Halogen**

**Need more information on product environmental compliance?**

Email [productcompliance@molex.com](mailto:productcompliance@molex.com)  
 Please visit the [Contact Us](#) section for any non-product compliance questions.

China ROHS Green Image  
 ELV Not Relevant  
 RoHS Phthalates Not Contained

**Search Parts in this Series**

[30068](#) Series

**Mates With**

[30068](#) Plug Housing, [30069](#) Header, [30070](#) Right Angle Header, [44473](#) Right Angle Header

**Use With**

[30072](#) Mini-Fit® TPA Key